

LIC ADO Prelims Full Length Mock Test 1 (PYQ)

Q1 Study the following information carefully and answer the questions accordingly.

Eight people, A, B, C, D, E, F, G, and H, are seated around a circular table, facing inside the center, but not necessarily in the same order. A sits opposite to D, who sits third to the left of C. G sits second to the right of F, who sits immediately to the right of B. E sits third to the left of H. B sits second to the left of D.

Who among the following is sitting opposite to H?

- (A) G (B) B
- (C) E (D) C
- (E) None of these

Q2 Study the following information carefully and answer the questions accordingly.

Eight people, A, B, C, D, E, F, G, and H, are seated around a circular table, facing inside the center, but not necessarily in the same order. A sits opposite to D, who sits third to the left of C. G sits second to the right of F, who sits immediately to the right of B. E sits third to the left of H. B sits second to the left of D.

In which position does C sit with respect to D?

- (A) Fourth to the right
- (B) Third to the right
- (C) Third to the left
- (D) Fifth to the left
- (E) None of these

Q3

Study the following information carefully and answer the questions accordingly.

Eight people, A, B, C, D, E, F, G, and H, are seated around a circular table, facing inside the center, but not necessarily in the same order. A sits opposite to D, who sits third to the left of C. G sits second to the right of F, who sits immediately to the right of B. E sits third to the left of H. B sits second to the left of D.

How many people are seated between A and B, when counted clockwise from A?

- (A) Two (B) Three
- (C) Five (D) Four
- (E) None of these

Q4 Study the following information carefully and answer the questions accordingly.

Eight people, A, B, C, D, E, F, G, and H, are seated around a circular table, facing inside the center, but not necessarily in the same order. A sits opposite to D, who sits third to the left of C. G sits second to the right of F, who sits immediately to the right of B. E sits third to the left of H. B sits second to the left of D.

In which position is G seated with respect to A?

- (A) Third to the left
- (B) Fourth to the right
- (C) Fifth to the right
- (D) Both Third to the left and Fifth to the right
- (E) None of these

Q5



Study the following information carefully and answer the questions accordingly.

Eight people, A, B, C, D, E, F, G, and H, are seated around a circular table, facing inside the center, but not necessarily in the same order. A sits opposite to D, who sits third to the left of C. G sits second to the right of F, who sits immediately to the right of B. E sits third to the left of H. B sits second to the left of D.

Who among the following is seated second to the right of H?

- (A) C
- (B) A
- (C) F
- (D) D
- (E) B

Q6 Study the following information carefully and answer the questions accordingly.

Six students P, Q, R, S, T, and U are getting different scores in the mock test and it is a multiple of 10. T scores more than only P. Two persons have scored in between R and S who scored less than R. Only one person scored in between R and Q. Q scored 20 marks more than T. P's score is 40. T's score is 50.

Who among the following persons has the highest marks?

- (A) U
- (B) S
- (C) R
- (D) T
- (E) Can't be determined

Q7 Study the following information carefully and answer the questions accordingly.

Six students P, Q, R, S, T, and U are getting different scores in the mock test and it is a multiple of 10. T scores more than only P. Two

persons have scored in between R and S who scored less than R. Only one person scored in between R and Q. Q scored 20 marks more than T. P's score is 40. T's score is 50.

What is the possible marks of S?

- (A) 80
- (B) 50
- (C) 60
- (D) 70
- (E) Can't be determined

Q8 Study the following information carefully and answer the questions accordingly.

Six students P, Q, R, S, T, and U are getting different scores in the mock test and it is a multiple of 10. T scores more than only P. Two persons have scored in between R and S who scored less than R. Only one person scored in between R and Q. Q scored 20 marks more than T. P's score is 40. T's score is 50.

Who among the following persons has the second lowest marks?

- (A) S
- (B) Q
- (C) T
- (D) P
- (E) Can't be determined

Q9 Study the following information carefully and answer the questions given below.

J, K, L, M, N, O and P attend the classes in a week starting from Monday to Sunday but not necessarily in the same order. No two people attend the same class on the same day.

Number of people attend the class after J is same as the number of people attend the class



before J. L attend the class before K. Three people attend the class between N and M, who attend the class after Friday. Number of people attend the class between L and P is same as the number of people attend the class between K and O. M attend the class immediately after O. K does not attend the class on Wednesday. Two people attend the class between L and J, who attend the class after L. P does not attend the class on Tuesday. K and L are not adjacent to each other.

Who attend the class on Friday?

- (A) N (B) K
(C) P (D) O
(E) None of these

Q10 Study the following information carefully and answer the questions given below.

J, K, L, M, N, O and P attend the classes in a week starting from Monday to Sunday but not necessarily in the same order. No two people attend the same class on the same day.

Number of people attend the class after J is same as the number of people attend the class before J. L attend the class before K. Three people attend the class between N and M, who attend the class after Friday. Number of people attend the class between L and P is same as the number of people attend the class between K and O. M attend the class immediately after O. K does not attend the class on Wednesday. Two people attend the class between L and J, who attend the class after L. P does not attend the class on Tuesday. K and L are not adjacent to each other.

How many persons attend the class between O and K?

- (A) Three (B) Two
(C) One (D) None
(E) None of these

Q11 Study the following information carefully and answer the questions given below.

J, K, L, M, N, O and P attend the classes in a week starting from Monday to Sunday but not necessarily in the same order. No two people attend the same class on the same day.

Number of people attend the class after J is same as the number of people attend the class before J. L attend the class before K. Three people attend the class between N and M, who attend the class after Friday. Number of people attend the class between L and P is same as the number of people attend the class between K and O. M attend the class immediately after O. K does not attend the class on Wednesday. Two people attend the class between L and J, who attend the class after L. P does not attend the class on Tuesday. K and L are not adjacent to each other.

Who attends the class immediately before J?

- (A) P (B) O
(C) N (D) M
(E) None of these

Q12 Study the following information carefully and answer the questions given below.

J, K, L, M, N, O and P attend the classes in a week starting from Monday to Sunday but not necessarily in the same order. No two people attend the same class on the same day.

Number of people attend the class after J is same as the number of people attend the class before J. L attend the class before K. Three



people attend the class between N and M, who attend the class after Friday. Number of people attend the class between L and P is same as the number of people attend the class between K and O. M attend the class immediately after O. K does not attend the class on Wednesday. Two people attend the class between L and J, who attend the class after L. P does not attend the class on Tuesday. K and L are not adjacent to each other.

If all the people are arranged in the alphabetical order from Monday to Sunday, then how many people remain same as before.

- (A) Two (B) One
(C) None (D) Three
(E) None of these

Q13 Study the following information carefully and answer the questions given below.

J, K, L, M, N, O and P attend the classes in a week starting from Monday to Sunday but not necessarily in the same order. No two people attend the same class on the same day.

Number of people attend the class after J is same as the number of people attend the class before J. L attend the class before K. Three people attend the class between N and M, who attend the class after Friday. Number of people attend the class between L and P is same as the number of people attend the class between K and O. M attend the class immediately after O. K does not attend the class on Wednesday. Two people attend the class between L and J, who attend the class after L. P does not attend the class on Tuesday. K and L are not adjacent to each other.

Four of the five options are related to each other in some manner. Find the odd one out.

- (A) L-P (B) O-K
(C) J-M (D) N-J
(E) P-M

Q14 In the given questions, assuming the given statements to be true. Find which of the given two conclusions number I and II is/are definitely true and give your answer accordingly.

Statements:

$$1 \geq 2 > 3 = 4 \geq 5 \geq 6$$

Conclusions:

I. $6 \leq 3$

II. $4 < 1$

- (A) Only conclusion I true
(B) Only conclusion II true
(C) Either conclusion I or conclusion II true
(D) Neither conclusion I nor conclusion II true
(E) Both conclusion I and conclusion II true

Q15 In the given questions, assuming the given statements to be true. Find which of the given two conclusions number I and II is/are definitely true and give your answer accordingly.

Statements:

$$@ \geq \$ \geq \# < \% < \& = ! \geq *$$

Conclusions:

I. $@ \geq \%$

II. $\% < *$

- (A) Only conclusion I true
(B) Only conclusion II true
(C) Either conclusion I or conclusion II true
(D) Neither conclusion I nor conclusion II true
(E) Both conclusion I and conclusion II true



Q16 In the given questions, assuming the given statements to be true. Find which of the given two conclusions number I and II is/are definitely true and give your answer accordingly.

Statements:

$Z > Y \geq X > W < V$

Conclusions:

I. $Y \geq V$

II. $Z > W$

- (A) Only conclusion I true
- (B) Only conclusion II true
- (C) Either conclusion I or conclusion II true
- (D) Neither conclusion I nor conclusion II true
- (E) Both conclusion I and conclusion II true

Q17 In the given questions, assuming the given statements to be true. Find which of the given two conclusions number I and II is/are definitely true and give your answer accordingly.

Statements:

$R \geq X \geq T > C \geq A = M$

Conclusions:

I. $R \geq A$

II. $M < T$

- (A) Only conclusion I true
- (B) Only conclusion II true
- (C) Either conclusion I or conclusion II true
- (D) Neither conclusion I nor conclusion II true
- (E) Both conclusion I and conclusion II true

Q18 Read both the conclusions and then decide which of the given conclusions logically follows from the given statements disregarding commonly known facts.

Statements:

All white are yellow

Some yellow are blue

No blue is pink

Conclusions:

I. All yellow being pink is a possibility

II. Some white are blue

- (A) Only I follow
- (B) Only II follow
- (C) Both I and II follow
- (D) Neither I nor II follow
- (E) Either I or II follow

Q19 Read both the conclusions and then decide which of the given conclusions logically follows from the given statements disregarding commonly known facts.

Statements:

No bike is train

No train is car

All car is bicycle

Conclusions:

I. All bike are bicycle is a possibility

II. All bicycle are car

- (A) Only I follow
- (B) Only II follow
- (C) Both I and II follow
- (D) Neither I nor II follow
- (E) Either I or II

Q20 Read both the conclusions and then decide which of the given conclusions logically follows from the given statements disregarding commonly known facts.

Statements:

All black are orange

All orange are violet

No violet is red



Conclusions:

- I. Some black are red
 II. All violet is orange
 (A) Only I follow
 (B) Only II follow
 (C) Both I and II follow
 (D) Neither I nor II follow
 (E) Either I or II follow

Q21 Read both the conclusions and then decide which of the given conclusions logically follows from the given statements disregarding commonly known facts.

Statements:

- Only a few A is B
 All B is D
 Some D is C

Conclusions:

- I. All A are B is a possibility
 II. Some C is B
 (A) Only I follow
 (B) Only II follow
 (C) Both I and II follow
 (D) Neither I nor II follow
 (E) Either I or II follow

Q22 Study the following information carefully and answer the questions accordingly.

A family consists of nine people, including three married couples. There is no child of a single parent. B is E's father-in-law, and E is G's only daughter-in-law. P and X are both siblings. O is the only son of Y, who is the only son of G. Then Q is P's sister's brother-in-law. G has three kids. The uncle of W is Y. The genders of W and X are the same.

What is O's relationship to W?

- | | |
|------------|-------------|
| (A) Niece | (B) Nephew |
| (C) Sister | (D) Brother |
| (E) cousin | |

Q23 Study the following information carefully and answer the questions accordingly.

A family consists of nine people, including three married couples. There is no child of a single parent. B is E's father-in-law, and E is G's only daughter-in-law. P and X are both siblings. O is the only son of Y, who is the only son of G. Then Q is P's sister's brother-in-law. G has three kids. The uncle of W is Y. The genders of W and X are the same.

How many male family members are there?

- (A) 3
 (B) 4
 (C) 6
 (D) 5
 (E) Can't be determined

Q24 Study the following information carefully and answer the questions accordingly.

A family consists of nine people, including three married couples. There is no child of a single parent. B is E's father-in-law, and E is G's only daughter-in-law. P and X are both siblings. O is the only son of Y, who is the only son of G. Then Q is P's sister's brother-in-law. G has three kids. The uncle of W is Y. The genders of W and X are the same.

Which of the following people is E's sister-in-law?

- | | |
|------------------|------------------|
| (A) Y | (B) P |
| (C) X | (D) Both b and c |
| (E) Both a and b | |



- Q25** How many such pairs of digits are there in the number '285763941' that have as many numbers between them as in the numerical series in both forward and backward direction ?
 (A) Four (B) Two
 (C) Three (D) One
 (E) More than Four

- Q26** Following questions are based on the five numbers given below, Study the given information and answer the following questions.

525 627 169 256 569

If all the digits in the number are arranged in the descending order within the number from left to right, then which among the following will be the lowest number after rearrangement?

- (A) 525 (B) 627
 (C) 169 (D) 256
 (E) None of these

- Q27** Following questions are based on the five numbers given below, Study the given information and answer the following questions.

525 627 169 256 569

What is the product of 3rd digit of 2nd lowest number and 1st digit of 2nd highest number?

- (A) 31 (B) 28
 (C) 24 (D) 25
 (E) 30

- Q28** Following questions are based on the five numbers given below, Study the given information and answer the following questions.

525 627 169 256 569

If the position of first and third digits of each of the numbers are interchanged, then which among the following is the highest number?

- (A) 569 (B) 169
 (C) 627 (D) 525
 (E) None of these

- Q29** Following questions are based on the five numbers given below, Study the given information and answer the following questions.

525 627 169 256 569

If 2 is subtracted from each number then how many numbers thus formed are odd numbers?

- (A) 5 (B) 3
 (C) 2 (D) 4
 (E) None of these

- Q30** Study the following information carefully and answer the questions accordingly.

Eight boxes named M, N, O, P, Q, R, S and T are placed one above each other but not necessarily in the same order. There are four boxes between P and R. There are two boxes between P and M. Box O is kept four boxes above box M. Box Q is kept just above box S, but is kept below box T. Box N is not kept near box M.

If all the boxes are arranged in an alphabetical order from top to bottom, then how many boxes remain unchanged in their position ?

- (A) Two (B) Four
 (C) One (D) None
 (E) None of these



Q31 Study the following information carefully and answer the questions accordingly.

Eight boxes named M, N, O, P, Q, R, S and T are placed one above each other but not necessarily in the same order. There are four boxes between P and R. There are two boxes between P and M. Box O is kept four boxes above box M. Box Q is kept just above box S, but is kept below box T. Box N is not kept near box M.

Which of the following Box is kept at the top most position?

- (A) Q (B) P
(C) M (D) O
(E) None of these

Q32 Study the following information carefully and answer the questions accordingly.

Eight boxes named M, N, O, P, Q, R, S and T are placed one above each other but not necessarily in the same order. There are four boxes between P and R. There are two boxes between P and M. Box O is kept four boxes above box M. Box Q is kept just above box S, but is kept below box T. Box N is not kept near box M.

The number of boxes kept between Box T and Box N was the same as between the number of boxes kept between Box Q and _____ ?

- (A) P (B) R
(C) Q (D) N
(E) O

Q33 Study the following information carefully and answer the questions accordingly.

Eight boxes named M, N, O, P, Q, R, S and T are placed one above each other but not necessarily in the same order. There are four boxes between P and R. There are two boxes between P and M. Box O is kept four boxes above box M. Box Q is kept just above box S, but is kept below box T. Box N is not kept near box M.

Which of the following pairs of boxes are adjacent to each other?

- (A) P - T (B) N - R
(C) O - Q (D) S - T
(E) None of these

Q34 Study the following information carefully and answer the questions accordingly.

Eight boxes named M, N, O, P, Q, R, S and T are placed one above each other but not necessarily in the same order. There are four boxes between P and R. There are two boxes between P and M. Box O is kept four boxes above box M. Box Q is kept just above box S, but is kept below box T. Box N is not kept near box M.

Four of the following five are alike in a certain way based on their positions in the above arrangement and so form a group. Which of the following does not belong to the group ?

- (A) PM (B) OT
(C) ST (D) QP
(E) MN

Q35 Four of the following five are alike in a certain way and hence they form a group. Which one of the following does not belong to that group?

- (A) MPU (B) BEJ
(C) RUZ (D) GJO



(E) KMR

- Q36** What approximate value will come in place of the question mark (?) in the following question? (You are not expected to calculate the exact value)

$$37.5\% \text{ of } 480 + 33.33\% \times 449 = ?$$

$$+ 16.66\% \times 239$$

- (A) 270 (B) 220
(C) 290 (D) 286
(E) None of these

- Q37** What approximate value will come in place of the question mark (?) in the following question? (You are not expected to calculate the exact value)

$$49.95 \times 19.95 - 24.99 \times 14.12$$

$$= (36 + ?) \times 9$$

- (A) 30 (B) 45
(C) 36 (D) 67
(E) None of these

- Q38** What approximate value will come in place of the question mark (?) in the following question? (You are not expected to calculate the exact value)

$$57\% \text{ of } 394 - 2.5\% \text{ of } 996 = ?$$

- (A) 370 (B) 230
(C) 200 (D) 450
(E) None of these

- Q39** What approximate value will come in place of the question mark (?) in the following question? (You are not expected to calculate the exact value)

$$36.15 \div 3.02 + ? = 177.96 - 18.98$$

- (A) 167 (B) 197
(C) 147 (D) 247
(E) None of these

- Q40** What approximate value will come in place of the question mark (?) in the following question?

(You are not expected to calculate the exact value)

$$10.02 \times 11.99 - 76.98 \div 10.96 = ?$$

$$+ 52.99$$

- (A) 80 (B) 70
(C) 60 (D) 90
(E) None of these

- Q41** From 1990–2000, the population of a country increased by 10%. From 2000–2010, the population of the country increased by 10%. From 2010–2020, the population of the country increased by 10%. Find the overall increased population (in percentage) of the country from 1990–2020.

- (A) 33.1% (B) 25%
(C) 44% (D) 30%
(E) None of these

- Q42** Julee bought 60 kg of rice at the rate of 9.50 per kg, and the same amount of rice at Rs.8.50 per kg mixed them. She sold the mixture at the rate of Rs.8.90/kg. Find her total profit or loss in the whole transaction.

- (A) Rs. 6 profit (B) Rs. 6 loss
(C) Rs. 12 profit (D) Rs. 12 loss
(E) None of these

- Q43** 4 years ago, a Principal's age was twice the sum of the ages of his 4 students. In 4 years, the Principal's age will be equal to the sum of the ages of the students. Find the present age of the Principal.

- (A) 60 years (B) 56 years
(C) 52 years (D) 48 years
(E) None of these

- Q44** If the time taken by a boat to go 3 km upstream is 200% more than that taken by the boat to go 2 km downstream and the speed of the boat in still water is 4 km/h more than the speed of the



stream, then find the downstream distance covered by the boat in 45 minutes?

- (A) 3 km (B) 12 km
(C) 6 km (D) 9 km
(E) 15 km

Q45 A, B and C can do a work in 12, 18 and 27 days respectively. They are working in a pattern like starting with A + B, then B + C, then C + A and repeating this pattern, then in how many days will the work will get completed?

- (A) 5 days
(B) $8\frac{4}{13}$ days
(C) $8\frac{5}{13}$ days
(D) $8\frac{7}{13}$ days
(E) 8 days

Q46 The speed of car P and car Q is 20 kmph and 30 kmph respectively. If the time taken by car P covers a certain distance is 4 hours more than the time taken by car Q covers the same distance, then find the thrice the distance travelled by car.

- (A) 750 km (B) 855 km
(C) 720 km (D) 800 km
(E) None of these

Q47 A, B and C enter into partnership in the ratio 5:8:9. After 4 months A increases his share by 10% and B by 20%. If total profit at the end of the year is Rs.36000. Find the share of C.

- (A) Rs.17000 (B) Rs.16400
(C) Rs.16500 (D) Rs.16200
(E) None of these

Q48 What will come of the question (?) mark.

- $\sqrt{1681} + 42 - 93 = -? + 24$
(A) 45 (B) 25
(C) 28 (D) 40
(E) 34

Q49 What will come of the question (?) mark.

- $256 + \sqrt{1024} + \sqrt{196} = ?^2 + 13$
(A) 17 (B) 20
(C) 23 (D) 30
(E) 35

Q50 What will come of the question (?) mark.

- $\sqrt{196} + 22 = 49 - ?$
(A) 22 (B) 18
(C) 13 (D) 9
(E) 12

Q51 What will come of the question (?) mark.

- $\frac{1}{2} \text{ of } \frac{2}{8} \text{ of } ? = 32 - 14$
(A) 132 (B) 122
(C) 144 (D) 152
(E) None of these

Q52 What should come in the place of question mark (?) in the given expression?

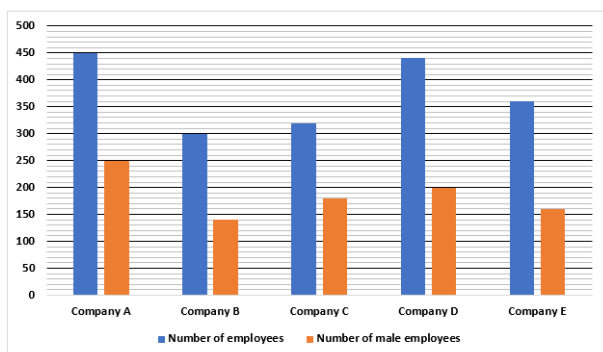
- $216 + 32 \times 4.5 - \sqrt{324} = ? \times 19$
(A) 19
(B) 33
(C) 18
(D) 22
(E) None of these

Directions (53-57) Read the following passage and answer the given questions.

Direction : Read the following information and answer the questions.

The following bar graph shows the number of employees and the number of male employees in 5 different companies.





Q53 Find the ratio of male and female employees in company A.

- (A) 6: 5 (B) 5: 4
(C) 9: 5 (D) 4: 3
(E) 7: 5

Q54 Find the ratio of the sum of the male employees in companies B and C to the sum of the female employees in companies D and E.

- (A) 6: 5 (B) 11: 9
(C) 9: 5 (D) 8: 11
(E) 7: 5

Q55 If the number of male employees is increased by 20% and the number of female employees is decreased by 25% in Company D, find the difference between the male to female employees in Company D.

- (A) 40 (B) 50
(C) 95 (D) 60
(E) 75

Q56 Find the ratio of the total number of female employees in companies B and C to the number of male employees in company A.

- (A) 6: 5 (B) 5: 4
(C) 9: 5 (D) 11: 8

(E) 7: 5

Q57 If $\frac{1}{4}$ of the male employees and $\frac{1}{5}$ of the female employees in company E were retired, find the total number of employees in the company at present.

- (A) 240 (B) 180
(C) 220 (D) 280
(E) 320

Q58 Find the missing term.

960 , 839 , 758 , 709 , ? , 675

- (A) 684 (B) 678
(C) 688 (D) 700
(E) 696

Q59 Find the missing term.

10 , 17 , 48 , 165 , 688 , 3475 , ?

- (A) 20892 (B) 20800
(C) 20202 (D) 21000
(E) None of these

Q60 Find the missing term.

37 , ? , 103 , 169 , 257 , 367

- (A) 71 (B) 55
(C) 67 (D) 59
(E) 61

Q61 Find the missing term.

3 , ? , 14 , 55 , 274 , 1643

- (A) 7 (B) 8
(C) 6 (D) 5
(E) 11

Q62 Find the missing term.

61 , 72 , ? , 73 , 59 , 74 , 58

- (A) 63 (B) 62
(C) 71 (D) 60
(E) 70

Directions (63-67) Read the following passage and answer the given questions.



Direction (1-5): Study the given information carefully and answer the following questions:

The below mentioned table shows the distribution of employees in five different companies in 2020.

Company	Number of Zones	Average number of employees per zone	Percentage of Male Employees
WIPRO	50	420	30%
ACCENTURE	35	610	50%
TCS	44	500	60%
CTS	42	525	40%
GOOGLE	40	470	20%

Q63 What is the total number of female employees working in Accenture and CTS together?

- (A) 23905 (B) 14578
(C) 34000 (D) 15000
(E) None of these

Q64 What is the average of total number of employees in five different companies?

- (A) 14000 (B) 21040
(C) 16789 (D) 34890
(E) 14589

Q65 In 2021, the female employees in TCS will be increased by 20% and male employees in CTS will be increased by 10%. What will be the total number of female employees in TCS and male employees in CTS in 2021?

- (A) 20262 (B) 31040
(C) 18789 (D) 24890
(E) 34589

Q66 Find the difference between total number of employees in WIPRO and Google.

- (A) 1262 (B) 3140
(C) 1889 (D) 2200
(E) 3459

Q67 Find the sum of female employees in Accenture, CTS and Google.

- (A) 38945 (B) 31040
(C) 28789 (D) 25890
(E) 30589

Q68 Mohan and Sita borrowed Rs. 2000 and Rs. 2200 respectively at the same rate of interest for $2\frac{1}{2}$ years. If Sita paid Rs. 25 more interest than Mohan, find the rate of interest.

- (A) 3% (B) 5%
(C) 4% (D) 6%
(E) None of these

Q69 A person spends $\frac{1}{3}$ of his income on food . He spends the rest of the income in the ratio 4:1 on buying clothes and books respectively. He spent Rs. 2400 on the books . Find the total income of man.

- (A) Rs. 18000 (B) Rs. 24000
(C) Rs. 12000 (D) Rs. 14000
(E) None of these

Q70 A container has 60 liters of orange juice. If 6 liters of orange juice is replaced by 6 liters of apple juice and this operation is repeated twice, what will be the quantity of orange juice in the new mixture?

- (A) 42 liters (B) 18 liters
(C) 43.74 liters (D) 53.74litres
(E) None of these

Directions (71-78) Read the following passage and answer the given questions.

Directions: Read the passage below and answer the questions that follow.



Birsa Munda (1875-1900) emerged as 'Dharti Aba' (Father of the Earth) in Munda society and is now being worshipped again as 'Lord' or 'Bhagwan'. He was the prophet, the visionary and the ultimate revolutionary. The short life of Birsa commands profound respect. Mundas probably are the oldest settlers in the Chhotanagpur area. They used to be found in villages known as 'khunkatti hatu'; cleared forest areas for agriculture. Munda society experienced joint ownership of land. Every property in the villages was community property. The Mundas' methods of agriculture could not produce surplus generation.

Their methods were entirely eco-friendly and they had a vast knowledge of landscape management and water resources. The British Raj in the nineteenth century with the help of local zamindars and middlemen helped establish outsiders, called 'diku' by Mundas, to settle in and cultivate the lands of the Mundas. These aliens were non-tribals and land-shark peasants from adjacent areas.

The British Raj wanted more and more revenues in the form of taxes and rent from the surplus agriculture production. They destroyed the Adivasi community land holding pattern and changed it to individual private ownership. Mundas started to lose their lands to 'dikus'. British agrarian aggression resulted in large-scale deforestation in Adivasi areas for expansion of agricultural land. Due to this agrarian conquest the tribal agrarian order began to disintegrate and their basic social structure was in shambles. **(A) Modern civilisation intruded into their lives and drag them to the so-called 'main stream,' although Mahasweta Devi and many others like her believe Adivasis are the mainstream in India.**

Many Mundas had to emigrate to the tea gardens of Assam as labourers after losing their cultivable land to the 'dikus'. This was the only option left to them. This was an economic necessity. The truthfulness, honesty and simplicity which were the intrinsic value of the culture of the Mundas were severely hit and damaged. Some of the Mundas adopted the means of deception.

Mundas had great empathy towards nature. Conservation of forests, and worshipping flora and fauna were their tradition. But British aggression looked at forests as a resource base for commercial purposes and they started to establish forest land as the property of the administration. They enacted several Forest Acts in the nineteenth century. **Roots and reclamation of lands for cultivation (A)/ 'protected forest' in these Acts denied the Adivasis even (B)/ their traditional rights to collect free firewood, (C)/ grazing of cattle, collecting fruits and (D)/ The concept of 'reserve forest' and (E)/.**

Thus the rights of Adivasis to the forests came under siege and started to erode in the British era. There were atrocities too on the religion and beliefs of the Mundas. Sing Bonga, the Sun, was given the chief place in their mythology. Marang Buru, the Great Spirit, is the greatest of divinities having power to do good or evil to the Mundas. The advent of Christian missionaries in the Munda land and conversions started a new chapter. Some of the Mundas converted to Christianity to ensure education and economic assistance from the church.

The number started increasing. This led to another aspect of conflict between the converts and non converts. Tribal solidarity was at stake and the rifts between the two groups



deepened. The Christian missionaries tried to detribalise the tribal society. The vertical divide in the name of religion only benefited the British administration. Conflict aggravated over the ownership of the burial ground. Strikingly enough this conflict over a burial ground has come into the news recently in Narayanpur district of Chhattisgarh. In October last year the tribals did not allow use of land to bury a converted Christian.

Mundas reacted to these developments – the twin attacks on land and forest rights and religion – through uprisings called 'Ulgulan' against the British Raj. Mundas were facing a severe identity crisis. Birsa emerged as their leader. Kumar Suresh Singh gave an indepth account of the Munda uprising led by Birsa Munda in his book 'The Dust, Storm and The Hanging Mist' in 1966, which was renamed as 'Birsa Munda and His Movement' in a later edition. Later came the renowned novel of Mahashweta Devi, 'Araanyer Adhikar'. This novel won the Sahitya Academy Award in 1979. Birsa proclaimed himself as God and ensured he would cure sick people free of cost. People gradually started to believe him and some miraculous cures formed the basis of his reputation as a healer. News spread rapidly.

This earned Birsa followers in many villages. Those who had faith in the 'Messenger of God' got cured. Birsa became 'Dharti Aba'. Followers of Birsa used to gather around him in large numbers with weapons like 'tangis' or 'bow and arrow'. Frightened by these gatherings, the British police arrested Birsa in August 1895. Birsa faced a two-year jail term on the charge of enticing people against the government and was released in November 1897. Soon after his release from jail, Birsa's followers met him and

pleaded that an organisation should be set up to recover the lost rights of the Mundas and to drive away the enemies. Their enemies were precisely the 'dikus', European missionaries, and government officials.

The politico-religious preparations were launched and meetings as well as propaganda were organised for the movement against the enemies. 'People decided the violent way to win back their kingdom as they perceived that legal and peaceful methods bristled with difficulties and might not achieve its goals'. (K S Singh).

'The movement was agrarian in its roots, violent in its means and political in its stand', Singh adds. The epidemic of burning and arrow shooting broke out on Christmas eve i.e. on 24 December 1899 as scheduled. It was spontaneous, sudden in its eruption, and violent in fury and passion. The rebels shot with arrows and were brutal in action. They operated over an area of 400 square miles in hilly terrain spread over Singhbhum and Ranchi districts, and Chakradharpur, targeting mainly churches and police stations. Khunti was the hotbed of the uprising. In almost the month-long war, Mundas killed quite a few people. But the movement was packed with decades' long passion and violence smouldered in Mundas' hearts due to deep rooted and widespread exploitation. The British armed forces retaliated heavily on 9 January 1900 in the hills of Sail Rakab and killed about 400 Mundas – men, women and children – using bullets. The Sail Rakab firing was the beginning of the end. It broke the back of the movement. Birsa was ultimately arrested in February along with about 500 rebels.

The Birsa movement jolted the British government. They started land settlement



operations that could provide agrarian security to the Mundas. The subsequent legislation – Tenancy Amendment Act of 1903 – prohibited or restrained Adivasi land transfer by sale or mortgage. This ensured for Munda villagers uninterrupted enjoyment of land tenancy. In the past, when the Mundas refused to pay rent their tenancy was sold. Further the Chhotanagpur Tenancy Act VI 1908 safeguarded various Munda rights. Most importantly the government became empowered to forcibly eject any alien from Khunkatti villages. The Munda 'Ulgulan' ultimately emerged triumphant. Ulihatu village was the birthplace of Birsa. Their house was made of bamboo strips but without mud, plaster or a secure roof.

Abject poverty was a daily companion of the family. Birsa's education was up to the upper primary. His family converted to Christianity but later reconverted. Birsa fought for complete independence, both religious and political. He inculcated self-confidence in the Munda community; moved from village to village in the jungles, and prepared the Mundas for the Ulgulan.

He died in Ranchi jail on 9 June 1900. **He was suave and timid – one flute was always tied to his waist – but a 'dangerous agitator' and**

Birsa lived an extraordinary life. He was no ordinary person.

- Q71** Birsa Munda's role as a leader in the Munda uprising can be primarily described as:
- (A) A religious preacher advocating peaceful resistance
 - (B)

A political figurehead leading a violent movement

- (C) A passive observer encouraging non-violent protests
- (D) A diplomatic negotiator seeking compromises with the British
- (E) None of these

- Q72** The impact of British policies on the Munda society led to:
- (A) Strengthening of tribal solidarity
 - (B) Preservation of traditional customs and beliefs
 - (C) Disintegration of the tribal agrarian order
 - (D) Enhanced socio-economic stability among Mundas
 - (E) None of these

- Q73** A suitable title for the passage that captures the essence of the narrative would be:
- (A) "The British Impact on Munda Society: A Tale of Resilience"
 - (B) "Birsa Munda: The Revolutionary Leader of Indigenous Uprising"
 - (C) "Religious Transformation: Mundas' Encounter with Missionaries"
 - (D) "Forest Policies and Land Exploitation: Mundas' Struggle for Survival"
 - (E) None of these

- Q74** The consequences of the Munda uprising led by Birsa Munda resulted in:
- (A) Complete eradication of British influence in the region
 - (B) Establishment of new religious practices among the Mundas
 - (C) Implementation of laws safeguarding Munda rights
 - (D)



Weakening of tribal identity and solidarity

(E) None of these

Q75 The tone of the passage can be best described as:

(A) Objective and analytical, focusing on historical events without bias

(B) Critical and accusatory towards the British administration

(C) Reverential and idolizing of Birsa Munda's leadership

(D) Detached and indifferent to the plight of the Mundas

(E) None of these

Q76 He was suave and timid – one flute was always tied to his waist – but a 'dangerous agitator' _____ and _____.

What phrase can be suitable for the given blank?

(A) A passive observer of events

(B) A revered spiritual leader

(C) A harmonious mediator between conflicting parties

(D) An indifferent bystander to societal issues

(E) a great threat to the British administration

Q77 (A) Modern civilisation intruded into their lives and drag them to the so- called 'main stream,' although Mahasweta Devi and many others like her believe Adivasis are the mainstream in India.

The sentence at (A) may be erroneous grammatically or contextually. Identify the error in the sentence and choose the respective option. If there is no error, choose option (E).

(A)

Modern civilisation intruded into their lives and

(B) drag them to the so- called 'main stream,' although

(C) Mahasweta Devi and many others like her

(D) believe Adivasis are the mainstream in India.

(E) No error

Q78 Roots and reclamation of lands for cultivation (A)/ 'protected forest' in these Acts denied the Adivasis even (B)/ their traditional rights to collect free firewood, (C)/ grazing of cattle, collecting fruits and (D)/ The concept of 'reserve forest' and (E)/.

The statement is broken into 5 parts A,B,C,D, and E and the parts are not arranged in a

coherent and grammatically correct manner. Arrange part A/B/C/D/E to form a

meaningful sentence which makes sense.

(A) ACDBE

(B) BACDE

(C) DCBEA

(D) CDEBA

(E) EBCDA

Q79 Directions: In the following questions two columns are given containing three sentences/phrases each. In the first column, sentences/phrases are A, B and C and in the second column the sentences/phrases are D, E and F. A sentence/phrase from the first column may or may not connect with another sentence/phrase from the second column to make a grammatically and contextually correct sentence. Each question has five options, four of which display the sequence(s) in which the sentences/phrases can be joined



to form a grammatically and contextually correct sentence. If none of the options given forms a correct sentence after combination, mark (e), i.e. "None of these" as your answer.

Column I	Column II
(A) Developers will have to submit their systems for review	(D) and ensure the safety and accuracy of AI models.
(B) A multifaceted approach may be required to mitigate bias	(E) will have inaccurately audit findings.
(C) If integrity of the data fields is not ensured, we	(F) and approval before releasing them commercially.

- (A) C-D & B-F
 (B) A-F & B-D
 (C) B-D
 (D) C-E
 (E) None of these

Q80 Directions: In the following questions two columns are given containing three sentences/phrases each. In the first column, sentences/phrases are A, B and C and in the second column the sentences/phrases are D, E and F. A sentence/phrase from the first column may or may not connect with another sentence/phrase from the second column to make a grammatically and contextually correct sentence. Each question has five options, four of which display the sequence(s) in which the sentences/phrases can be joined to form a grammatically and contextually correct sentence. If none of the options given forms a correct sentence after combination, mark (e), i.e. "None of these" as your answer.

Column I	Column II
(A) When the infrared beam strikes the noble gas	(D) short light pulses and using them to study superfast processes.
(B) Attosecond science deals with the production of extreme	(E) atoms, it produce multiple overtones.
(C) One solution is to use a digital camera that creates photographs	(F) by capturing light coming from a source using a sensor.

- (A) C-D & B-F
 (B) A-E & B-D
 (C) B-D
 (D) C-F
 (E) None of these

Q81 Directions: In the following questions two columns are given containing three sentences/phrases each. In the first column, sentences/phrases are A, B and C and in the second column the sentences/phrases are D, E and F. A sentence/phrase from the first column may or may not connect with another sentence/phrase from the second column to make a grammatically and contextually correct sentence. Each question has five options, four of which display the sequence(s) in which the sentences/phrases can be joined to form a grammatically and contextually correct sentence. If none of the options given forms a correct sentence after combination, mark (e), i.e. "None of these" as your answer.

Column I	Column II
----------	-----------



(A) Informal workers, despite their significant contribution to national income are	(D) severely impact their physical and mental health, aggravating their vulnerability.
(B) The absence of proper financial and health-care security among the working and elderly can	(E) debt and raising health-care costs, which are intertwined and mutually reinforcing.
(C) Informal workers face mental distress due to accumulating	(F) perennially exposed to various economic, physical and mental vulnerabilities.

- (A) C-D & B-F (B) A-E
 (C) B-D & A-F (D) C-E
 (E) None of these

Q82 Directions: In the following questions two columns are given containing three sentences/phrases each. In the first column, sentences/phrases are A, B and C and in the second column the sentences/phrases are D, E and F. A sentence/phrase from the first column may or may not connect with another sentence/phrase from the second column to make a grammatically and contextually correct sentence. Each question has five options, four of which display the sequence(s) in which the sentences/phrases can be joined to form a grammatically and contextually correct sentence. If none of the options given forms a correct sentence after combination, mark (e), i.e. "None of these" as your answer.

Column I	Column II
----------	-----------

(A) The primary motivation behind the DIA is to bring India's regulatory	(D) provisions aimed at addressing the ever-evolving digital landscape.
(B) The proposed DIA encompasses a spectrum of significant	(E) landscape in sync with the digital revolution of the 21st century.
(C) Nations worldwide are grappling with the need to	(F) update its legal frameworks to adapt to the evolving digital landscape.

- (A) C-D & B-F (B) A-E
 (C) B-D & A-E (D) C-F & A-E
 (E) None of these

Q83 Directions: In the following questions two columns are given containing three sentences/phrases each. In the first column, sentences/phrases are A, B and C and in the second column the sentences/phrases are D, E and F. A sentence/phrase from the first column may or may not connect with another sentence/phrase from the second column to make a grammatically and contextually correct sentence. Each question has five options, four of which display the sequence(s) in which the sentences/phrases can be joined to form a grammatically and contextually correct sentence. If none of the options given forms a correct sentence after combination, mark (e), i.e. "None of these" as your answer.

Column I	Column II
(A) While the first challenge of a strong	(D) to the fore the need for an organised battery



reverse supply chain would be the	recycling industry in place.
(B) Li-ion batteries even in a discharging state are prone to catching fire if they	(E) comes in contact with moisture and therefore transporting them is a riskier business.
(C) The increasing demand for Li-ion batteries has also brought	(F) collection of the batteries, the next step would be transporting them safely to the recycler.

- (A) C-D & A-F
 (B) A-F
 (C) B-D
 (D) C-F & A-F
 (E) None of these

Directions (84-89) Read the following passage and answer the given questions.

Directions: In the passage given below there are blanks that are to be filled with the options given below. Find out the suitable fit for each case.

In the press conference following the recent Monetary Policy Committee (MPC) meeting on June 8, the Reserve Bank of India introduced a new terminology, "aligning with the (inflation) target", to describe the objective of its future monetary policy actions. In an inflation targeting regime, clear communication by the central bank plays a key role in setting _____ (A) of economic agents. The introduction of this new terminology could inadvertently create ambiguity which could end up hurting the _____ (B) of the inflation targeting framework. The RBI is legally mandated to achieve a 4 percent CPI (consumer price index) inflation target, with a band of (+/-) 2 percent around it. For some

time, this legally mandated target was not _____ (C). For five consecutive quarters average inflation exceeded the upper _____ (D) of the RBI's tolerance band. CPI inflation averaged 6.6 percent between January 2022 and March 2023. Since then, _____ (E) has been cooling off, with CPI during March-May 2023 averaging 4.9 percent. The law is clear that the RBI's policy actions must be _____ (F) towards achieving the 4 percent target.

Q84 Which of the following given words will make the sentence meaningful by filling in the blank (A)?

- (A) Budget (B) Strategy
 (C) Threshold (D) Expectations
 (E) Reliance

Q85 Which of the following given words will make the sentence meaningful by filling in the blank (B)?

- (A) Foundation (B) Credibility
 (C) Profitability (D) Probability
 (E) Conformity

Q86 Which of the following given words will make the sentence meaningful by filling in the blank (C)?

- (A) Sustained
 (B) Confirmed
 (C) Issued
 (D) Noticed
 (E) Achieved

Q87 Which of the following given words will make the sentence meaningful by filling in the blank (D)?

- (A) Ceiling (B) Threshold
 (C) Bound (D) Adjustment



(E) Band

Q88 Which of the following given words will make the sentence meaningful by filling in the blank (E)?

- (A) Stagflation (B) Recession
(C) Inflation (D) Economy
(E) Funding

Q89 Which of the following given words will make the sentence meaningful by filling in the blank (F)?

- (A) Geared (B) Framed
(C) Tightened (D) Availed
(E) Prevented

Q90 Directions: In the questions given here, a sentence is divided into four parts. One of the parts of each sentence is highlighted in bold. It is the grammatically correct part of the sentence. Out of the three other parts, you need to choose the part/parts of the sentence that contain grammatical or contextual errors. If the given sentence is both grammatically correct and contextually meaningful, choose option (E) i.e., "All are correct" as your answer.

The company is maintaining its position (A)/ as a market leader in the tech industry since over four decades, constantly innovating (B)/ and introducing groundbreaking products that (C)/ **have shaped the course of how we live and work (D).**

- (A) B and C
(B) C and A
(C) A and B
(D) Only B
(E) All are correct

Q91 Directions: In the questions given here, a sentence is divided into four parts. One of the parts of each sentence is highlighted in bold. It

is the grammatically correct part of the sentence. Out of the three other parts, you need to choose the part/parts of the sentence that contain grammatical or contextual errors. If the given sentence is both grammatically correct and contextually meaningful, choose option (E) i.e., "All are correct" as your answer.

If they practice regularly and (A)/**focus intensely on their** (B)/weaknesses with determination, (C)/ they can improved significantly on the field (D).

- (A) D and C
(B) Only A
(C) A and D
(D) Only D
(E) All are correct

Q92 Directions: In the questions given here, a sentence is divided into four parts. One of the parts of each sentence is highlighted in bold. It is the grammatically correct part of the sentence. Out of the three other parts, you need to choose the part/parts of the sentence that contain grammatical or contextual errors. If the given sentence is both grammatically correct and contextually meaningful, choose option (E) i.e., "All are correct" as your answer.

The news website covered the most (A)/ recent technological advancements, (B)/ provided readers with up-to-date information (C)/ **and keeping them engaged in the world of technology (D).**

- (A) D and C
(B) C and A
(C) Only A
(D) Only D
(E) All are correct



Q93 Directions: In the questions given here, a sentence is divided into four parts. One of the parts of each sentence is highlighted in bold. It is the grammatically correct part of the sentence. Out of the three other parts, you need to choose the part/parts of the sentence that contain grammatical or contextual errors. If the given sentence is both grammatically correct and contextually meaningful, choose option (E) i.e., "All are correct" as your answer.

She does do her daily (A)/exercise routine diligently (B)/**and follows a balanced diet**, (C)/ensured she stays fit and healthy (D).

- (A) D and B
- (B) D and A
- (C) Only A
- (D) Only D
- (E) All are correct

Q94 Directions: In the questions given here, a sentence is divided into four parts. One of the parts of each sentence is highlighted in bold. It is the grammatically correct part of the sentence. Out of the three other parts, you need to choose the part/parts of the sentence that contain grammatical or contextual errors. If the given sentence is both grammatically correct and contextually meaningful, choose option (E) i.e., "All are correct" as your answer.

Lately, she is experiencing a (A)/significant improvement in (B)/ her tennis skills due to (C)/**consistent and dedicated regular practice** (D).

- (A) A and C
- (B) C and A
- (C) Only A
- (D) Only A
- (E) All are correct

Q95 Direction: In each of these questions, a sentence with four words printed in bold is given. One of these four words printed in bold may be either wrongly spelled or inappropriate in context of the sentence. Find out the word which is wrongly spelled or inappropriate if any. If all the words printed in bold are correctly spelled and also appropriate in the context of the sentence, mark (E) "All are correct" as your answer.

The **erudite** professor captivated his students with his **erudition** and **intelectual** prowess, inspiring them to pursue academic **excellence**.

- (A) erudite
- (B) erudition
- (C) excellence
- (D) intelectual
- (E) All are correct

Q96 Direction: In each of these questions, a sentence with four words printed in bold is given. One of these four words printed in bold may be either wrongly spelled or inappropriate in context of the sentence. Find out the word which is wrongly spelled or inappropriate if any. If all the words printed in bold are correctly spelled and also appropriate in the context of the sentence, mark (E) "All are correct" as your answer.

Propelled by a bold vision, the government's new education policy seeks to **revolutionize** the **curriculum**, infusing cutting-edge **pedagogy** and state-of-the-art **technology** into classrooms.

- (A) Technology
- (B) Curriculum



- (C) Pedagogy
- (D) Revolutionize
- (E) All are correct

Q97 Direction: In each of these questions, a sentence with four words printed in bold is given. One of these four words printed in bold may be either wrongly spelled or inappropriate in context of the sentence. Find out the word which is wrongly spelled or inappropriate if any. If all the words printed in bold are correctly spelled and also appropriate in the context of the sentence, mark (E) "All are correct" as your answer.

Embarking on a noble mission, a **phlanthropic** foundation vows to pour substantial funds into **empowering** educational initiatives in **marginalized** communities, fostering equitable **opportunities** for aspiring learners.

- (A) Opportunities
- (B) Phlanthropic
- (C) Empowering
- (D) Marginalized
- (E) All are correct

Q98 Direction: In each of these questions, a sentence with four words printed in bold is given. One of these four words printed in bold may be either wrongly spelled or inappropriate in context of the sentence. Find out the word which is wrongly spelled or inappropriate if any. If all the words printed in bold are correctly spelled and also appropriate in the context of the sentence, mark (E) "All are correct" as your answer.

Garnering international **acclaim**, the erudite scientist's **pioneering** research on **renewable**

energy **ushers** in a promising era of environmental sustainability.

- (A) Acclaim
- (B) Renewable
- (C) Pioneering
- (D) Ushers
- (E) All are correct

Q99 Direction: In each of these questions, a sentence with four words printed in bold is given. One of these four words printed in bold may be either wrongly spelled or inappropriate in context of the sentence. Find out the word which is wrongly spelled or inappropriate if any. If all the words printed in bold are correctly spelled and also appropriate in the context of the sentence, mark (E) "All are correct" as your answer.

Within the **crucible** of corporate fusion, the recent amalgamation of two industry titans ushers in a **seismic** transformation, **heralding** a new era of synergistic growth and **innovation**.

- (A) Crucible
- (B) Seismic
- (C) Innovation
- (D) Heralding
- (E) All are correct

Q100 Direction: In each of these questions, a sentence with four words printed in bold is given. One of these four words printed in bold may be either wrongly spelled or inappropriate in context of the sentence. Find out the word which is wrongly spelled or inappropriate if any. If all the words printed in bold are correctly spelled and also appropriate in the context of the sentence, mark (E) "All are



correct" as your answer.

The **literacy** program's success was **evident** as students **demonstrated** improved language proficiency and **articulation**.

- (A) Literacy
- (B) Evident
- (C) Demonstrated
- (D) Articulation
- (E) All are correct



Answer Key

Q1 (A)
Q2 (B)
Q3 (C)
Q4 (D)
Q5 (C)
Q6 (C)
Q7 (C)
Q8 (C)
Q9 (D)
Q10 (C)
Q11 (A)
Q12 (C)
Q13 (E)
Q14 (E)
Q15 (D)
Q16 (B)
Q17 (B)
Q18 (D)
Q19 (A)
Q20 (D)
Q21 (D)
Q22 (E)
Q23 (B)
Q24 (D)
Q25 (A)
Q26 (A)
Q27 (E)

Q28 (A)
Q29 (D)
Q30 (A)
Q31 (D)
Q32 (A)
Q33 (B)
Q34 (D)
Q35 (E)
Q36 (C)
Q37 (C)
Q38 (C)
Q39 (C)
Q40 (C)
Q41 (A)
Q42 (D)
Q43 (C)
Q44 (C)
Q45 (D)
Q46 (C)
Q47 (D)
Q48 (E)
Q49 (A)
Q50 (C)
Q51 (C)
Q52 (C)
Q53 (B)
Q54 (D)



Q55 (D)
Q56 (A)
Q57 (D)
Q58 (A)
Q59 (A)
Q60 (D)
Q61 (D)
Q62 (D)
Q63 (A)
Q64 (B)
Q65 (A)
Q66 (D)
Q67 (A)
Q68 (B)
Q69 (A)
Q70 (C)
Q71 (B)
Q72 (C)
Q73 (B)
Q74 (C)
Q75 (B)
Q76 (E)
Q77 (B)

Q78 (E)
Q79 (B)
Q80 (D)
Q81 (C)
Q82 (C)
Q83 (A)
Q84 (D)
Q85 (B)
Q86 (E)
Q87 (B)
Q88 (C)
Q89 (A)
Q90 (C)
Q91 (D)
Q92 (B)
Q93 (B)
Q94 (C)
Q95 (D)
Q96 (B)
Q97 (B)
Q98 (A)
Q99 (E)
Q100 (D)

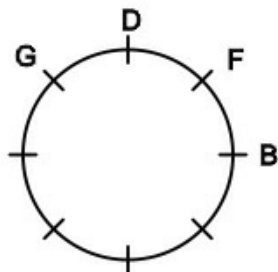


Hints & Solutions

Q1 Text Solution:

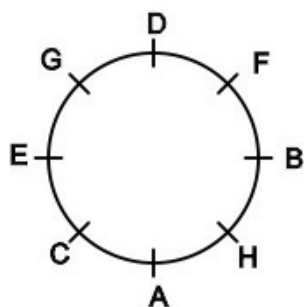
B sits second to the left of D.

G sits second to the right of F, who sits immediate right of B.



E sits third to the left of H.

A is opposite to D, who sits third to the left of C.



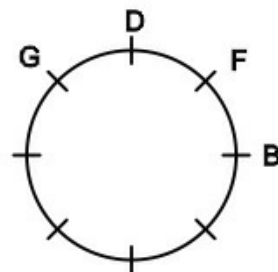
G is opposite to H.

G is facing H.

Q2 Text Solution:

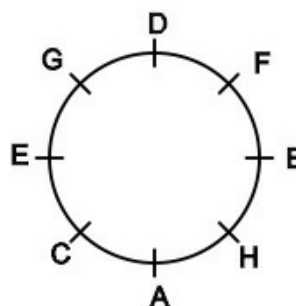
B sits second to the left of D.

G sits second to the right of F, who sits immediate right of B.



E sits third to the left of H.

A is opposite to D, who sits third to the left of C.

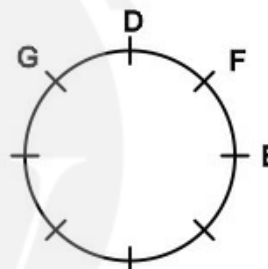


C sits 3rd to the right of D.

Q3 Text Solution:

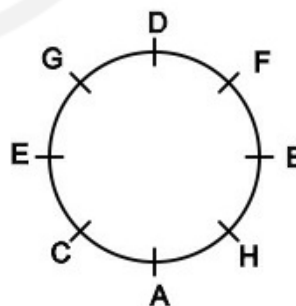
B sits second to the left of D.

G sits second to the right of F, who sits immediate right of B.



E sits third to the left of H.

A is opposite to D, who sits third to the left of C.



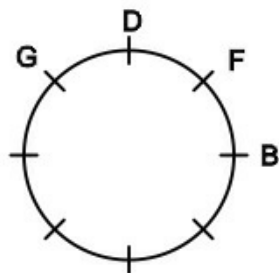
Five person is seated between A and B, when counted clockwise from A.

Q4 Text Solution:

B sits second to the left of D.

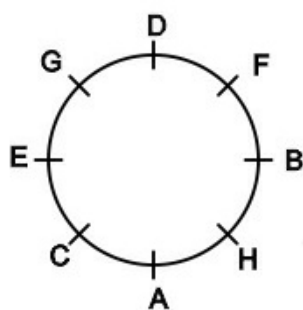


G sits second to the right of F, who sits immediate right of B.



E sits third to the left of H.

A is opposite to D, who sits third to the left of C.

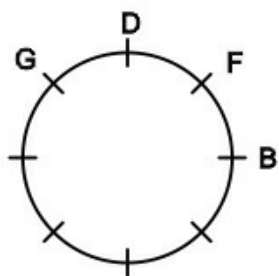


G is seated 3rd to the left and 5th to the right of A.

Q5 Text Solution:

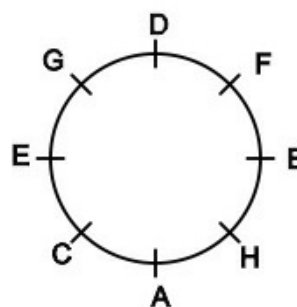
B sits second to the left of D.

G sits second to the right of F, who sits immediate right of B.



E sits third to the left of H.

A is opposite to D, who sits third to the left of C.



F is seated second to the right of H.

Q6 Text Solution:

We have,

$R > U > Q > S > T > P$

Two persons have scored in between R and S who scored less than R. Only one person scored in between R and Q

$R > U > Q > S > T > P$

Q scored 20 marks more than T. P's score is 40.

T's score is 50. We get,

$R > U > Q > S > T > P$

70 60 50 40

Q7 Text Solution:

We have,

$R > U > Q > S > T > P$

Two persons have scored in between R and S who scored less than R. Only one person scored in between R and Q

$R > U > Q > S > T > P$

Q scored 20 marks more than T. P's score is 40.

T's score is 50. We get,

$R > U > Q > S > T > P$

70 60 50 40

Q8 Text Solution:

We have,

$R > U > Q > S > T > P$



Two persons have scored in between R and S who scored less than R. Only one person scored in between R and Q

$$R > U > Q > S > T > P$$

Q scored 20 marks more than T. P's score is 40. T's score is 50. We get,

$$R > U > Q > S > T > P$$

$$70 \quad 60 \quad 50 \quad 40$$

Q9 Text Solution:

J, K, L, M, N, O and P attend the classes in a week starting from Monday to Sunday but not necessarily in the same order. No two people attend the same class on the same day. So, we can draw a structure as;

Day	Person
Monday	
Tuesday	
Wednesday	
Thursday	
Friday	
Saturday	
Sunday	

Number of people attend the class after J is same as the number of people attend the class before J. Three people attend the class between N and M, who attend the class after Friday.

M attend the class immediately after O.

So, here we have two cases;

	Case 1	Case 2
Day	Person	Person
Monday		
Tuesday	N	
Wednesday		N
Thursday	J	J
Friday	O	
Saturday	M	O
Sunday		M

Two people attend the class between L and J, who attend the class after L.

	Case 1	Case 2
Day	Person	Person
Monday	L	L
Tuesday	N	
Wednesday		N
Thursday	J	J
Friday	O	
Saturday	M	O
Sunday		M

Number of people attend the class between L and P is same as the number of people attend the class between K and O. L attend the class before K. P does not attend the class on Tuesday. K and L are not adjacent to each other. So, we get,



	Case 1	Case 2
Day	Person	Person
Monday	L	L
Tuesday	N	K
Wednesday	P	N
Thursday	J	J
Friday	O	P
Saturday	M	O
Sunday	K	M

So, here Case 2 is invalid. So, Case 2 gets cancelled.

So, **Final Arrangement:**

Day	Person
Monday	L
Tuesday	N
Wednesday	P
Thursday	J
Friday	O
Saturday	M
Sunday	K

O attend the class on Friday.

Q10 Text Solution:

J, K, L, M, N, O and P attend the classes in a week starting from Monday to Sunday but not necessarily in the same order. No two people attend the same class on the same day. So, we can draw a structure as;

Day	Person
Monday	
Tuesday	
Wednesday	
Thursday	
Friday	
Saturday	
Sunday	

Number of people attend the class after J is same as the number of people attend the class before J. Three people attend the class between N and M, who attend the class after Friday.

M attend the class immediately after O.

So, here we have two cases;

	Case 1	Case 2
Day	Person	Person
Monday		
Tuesday	N	
Wednesday		N
Thursday	J	J
Friday	O	
Saturday	M	O
Sunday		M

Two people attend the class between L and J, who attend the class after L.



	Case 1	Case 2
Day	Person	Person
Monday	L	L
Tuesday	N	
Wednesday		N
Thursday	J	J
Friday	O	
Saturday	M	O
Sunday		M

Number of people attend the class between L and P is same as the number of people attend the class between K and O. L attend the class before K. P does not attend the class on Tuesday. K and L are not adjacent to each other. So, we get,

	Case 1	Case 2
Day	Person	Person
Monday	L	L
Tuesday	N	K
Wednesday	P	N
Thursday	J	J
Friday	O	P
Saturday	M	O
Sunday	K	M

So, here Case 2 is invalid. So, Case 2 gets cancelled.

So, **Final Arrangement:**

Day	Person
Monday	L
Tuesday	N
Wednesday	P
Thursday	J
Friday	O
Saturday	M
Sunday	K

Q11 Text Solution:

J, K, L, M, N, O and P attend the classes in a week starting from Monday to Sunday but not necessarily in the same order. No two people attend the same class on the same day. So, we can draw a structure as;

Day	Person
Monday	
Tuesday	
Wednesday	
Thursday	
Friday	
Saturday	
Sunday	

Number of people attend the class after J is same as the number of people attend the class before J. Three people attend the class between N and M, who attend the class after Friday.

M attend the class immediately after O.

So, here we have two cases;



	Case 1	Case 2
Day	Person	Person
Monday		
Tuesday	N	
Wednesday		N
Thursday	J	J
Friday	O	
Saturday	M	O
Sunday		M

Two people attend the class between L and J, who attend the class after L.

	Case 1	Case 2
Day	Person	Person
Monday	L	L
Tuesday	N	
Wednesday		N
Thursday	J	J
Friday	O	
Saturday	M	O
Sunday		M

Number of people attend the class between L and P is same as the number of people attend the class between K and O. L attend the class before K. P does not attend the class on Tuesday. K and L are not adjacent to each other. So, we get,

	Case 1	Case 2
Day	Person	Person
Monday	L	L
Tuesday	N	K
Wednesday	P	N
Thursday	J	J
Friday	O	P
Saturday	M	O
Sunday	K	M

So, here Case 2 is invalid. So, Case 2 gets cancelled.

So, **Final Arrangement:**

Day	Person
Monday	L
Tuesday	N
Wednesday	P
Thursday	J
Friday	O
Saturday	M
Sunday	K

Q12 Text Solution:

J, K, L, M, N, O and P attend the classes in a week starting from Monday to Sunday but not necessarily in the same order. No two people attend the same class on the same day. So, we can draw a structure as;



Day	Person
Monday	
Tuesday	
Wednesday	
Thursday	
Friday	
Saturday	
Sunday	

Number of people attend the class after J is same as the number of people attend the class before J. Three people attend the class between N and M, who attend the class after Friday.

M attend the class immediately after O.

So, here we have two cases;

	Case 1	Case 2
Day	Person	Person
Monday		
Tuesday	N	
Wednesday		N
Thursday	J	J
Friday	O	
Saturday	M	O
Sunday		M

Two people attend the class between L and J, who attend the class after L.

	Case 1	Case 2
Day	Person	Person
Monday	L	L
Tuesday	N	
Wednesday		N
Thursday	J	J
Friday	O	
Saturday	M	O
Sunday		M

Number of people attend the class between L and P is same as the number of people attend the class between K and O. L attend the class before K. P does not attend the class on Tuesday. K and L are not adjacent to each other. So, we get,

	Case 1	Case 2
Day	Person	Person
Monday	L	L
Tuesday	N	K
Wednesday	P	N
Thursday	J	J
Friday	O	P
Saturday	M	O
Sunday	K	M

So, here Case 2 is invalid. So, Case 2 gets cancelled.

So, **Final Arrangement:**



Day	Person
Monday	L
Tuesday	N
Wednesday	P
Thursday	J
Friday	O
Saturday	M
Sunday	K

Q13 Text Solution:

J, K, L, M, N, O and P attend the classes in a week starting from Monday to Sunday but not necessarily in the same order. No two people attend the same class on the same day. So, we can draw a structure as;

Day	Person
Monday	
Tuesday	
Wednesday	
Thursday	
Friday	
Saturday	
Sunday	

Number of people attend the class after J is same as the number of people attend the class before J. Three people attend the class between N and M, who attend the class after Friday.

M attend the class immediately after O.

So, here we have two cases;

	Case 1	Case 2
Day	Person	Person
Monday		
Tuesday	N	
Wednesday		N
Thursday	J	J
Friday	O	
Saturday	M	O
Sunday		M

Two people attend the class between L and J, who attend the class after L.

	Case 1	Case 2
Day	Person	Person
Monday	L	L
Tuesday	N	
Wednesday		N
Thursday	J	J
Friday	O	
Saturday	M	O
Sunday		M

Number of people attend the class between L and P is same as the number of people attend the class between K and O. L attend the class before K. P does not attend the class on Tuesday. K and L are not adjacent to each other. So, we get,



	Case 1	Case 2
Day	Person	Person
Monday	L	L
Tuesday	N	K
Wednesday	P	N
Thursday	J	J
Friday	O	P
Saturday	M	O
Sunday	K	M

So, here Case 2 is invalid. So, Case 2 gets cancelled.

So, **Final Arrangement:**

Day	Person
Monday	L
Tuesday	N
Wednesday	P
Thursday	J
Friday	O
Saturday	M
Sunday	K

Q14 Text Solution:

Solution -

Conclusion 1: $6 \leq 3$ It is true.

In the statement relation between 6 and 3 is $3 = 4 \geq 5 \geq 6$ this here common symbol \geq is present so, $6 \leq 3$ It is true.

Conclusion 2: $4 < 1$ It is true.

In the statement relation between 4 and 1 is $1 \geq 2 > 3 = 4$ this here common symbol $>$ is present so, $4 < 1$ it is true.

Q15 Text Solution:

Solution -

Conclusion 1: $@ \geq \%$ It is not true.

In the statement relation between @ and % is @

$\geq \$ \geq \# < \%$ this here opposite symbols are present between @ and %, so $@ \geq \%$ it is not true.

Conclusion 2: $\% < *$ It is not true.

In the statement relation between % and * is $\% < \& = ! \geq *$ this here opposite symbols are present between % and *, so $\% < *$ it is not true.

Q16 Text Solution:

Solution -

Conclusion 1: $Y \geq V$ It is not true.

In the statement relation between Y and V is $Y \geq X > W < V$ here opposite symbols are present between Y and V, so $Y \geq V$ it is not true.

Conclusion 2: $Z > W$ It is true.

In the statement relation between Z and W is $Z > Y \geq X > W$ here common symbol $>$ is present so, $Z > W$ it is true.

Q17 Text Solution:

Solution -

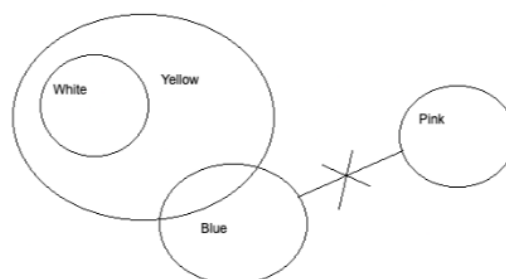
Conclusion 1: $R \geq A$ It is not true.

In the statement relation between R and A is $R \geq X \geq T > C \geq A$ here common symbol $>$ is present so, $R > A$ it is true but conclusion asks $R \geq A$ it is false.

Conclusion 2: $M < T$ It is true.

In the statement relation between M and T is $T > C \geq A = M$ here common symbol $>$ is present so, $M < T$ it is true.

Q18 Text Solution:



Conclusion I: All yellow being pink is a possibility



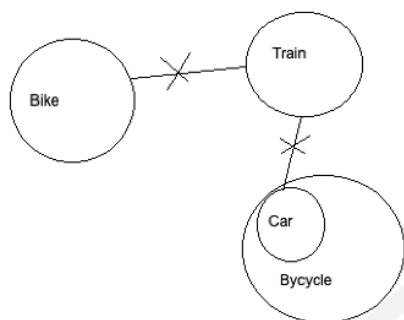
All yellow can never be pink because some yellow are blue and no blue is pink.

Conclusion II: Some white are blue

Some white are blue is not true, as there is no direct relationship between white and blue in the diagram.

Neither I nor II follow.

Q19 Text Solution:



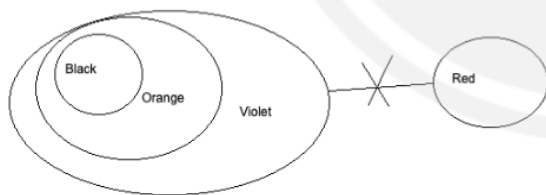
Conclusion I: All bike are bicycle is a possibility
All bike are bicycle is a possibility is true because there is no negative relationship between bike and bicycle.

Conclusion II: All bicycle are car

All bicycle are car is not true because all car are bicycle.

Only I follow.

Q20 Text Solution:



Conclusion I: Some black are red

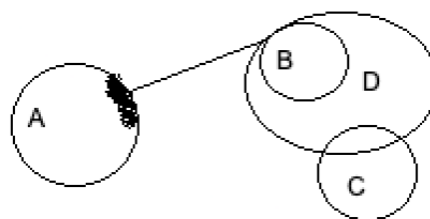
Some black are red is not true as all black are violet and no violet is red.

Conclusion II: All violet is orange

All violet is orange is not true as all orange are violet.

Neither I nor II follow.

Q21 Text Solution:



Conclusion I: All A are B is a possibility

All A are B is a possibility is not true as only a few A can be B. Not all A can be B.

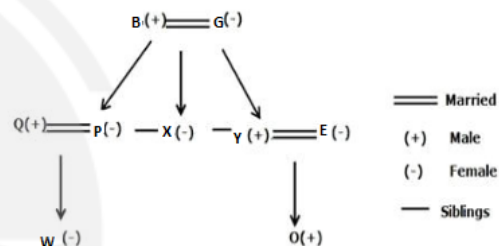
Conclusion II: Some C is B

Some C is B is not true as this is not clearly visible in the diagram.

Neither I nor II follow.

Q22 Text Solution:

According to the given conditions family chart will be:-

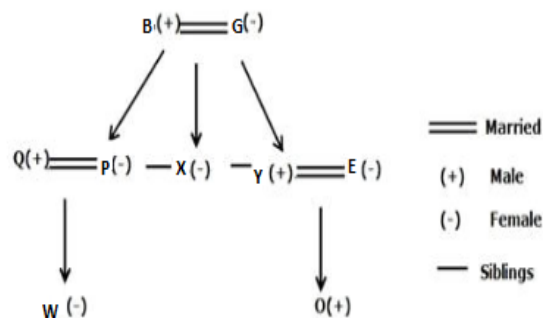


According to the family chart, we can say that:
O is the cousin of W.

Hence, the correct answer is option E.

Q23 Text Solution:

According to the given conditions family chart will be:-



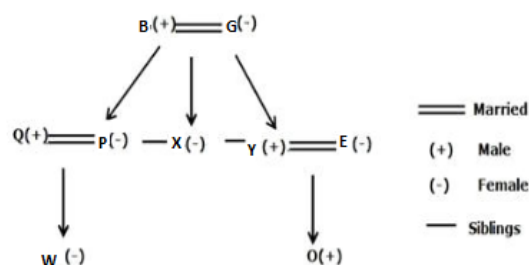
According to the family chart, we can say that:
4 male family members are there.



Hence, the correct answer is option B.

Q24 Text Solution:

According to the given conditions family chart will be:-

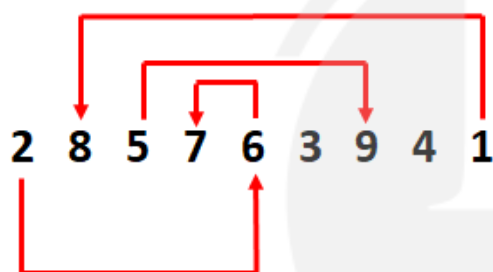


According to the family chart, we can say that:
P and X are E's sister-in-law.

Hence, the correct answer is option D.

Q25 Text Solution:

26,59,67,18



Q26 Text Solution:

525 627 169 256 569

Descending order- 552 762 961 652 965

Hence 525

Q27 Text Solution:

2nd lowest:- 256

2nd highest:- 569

Product:- $5 \times 6 = 30$

Q28 Text Solution:

525 627 169 256 569

525 726 961 652 **965**

Ans:- **569**

Q29 Text Solution:

$525 - 2 = 523$

$627 - 2 = 625$

$169 - 2 = 167$

$256 - 2 = 254$

$569 - 2 = 567$

Ans:- 4

Q30 Text Solution:

There are four boxes between P and R.

Case : 1

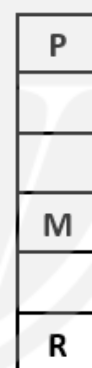


Case : 2

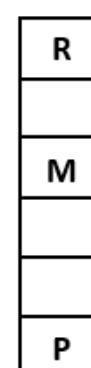


There are two boxes between P and M.

Case : 1



Case : 2



Box O is kept four boxes above box M.



Case : 1 Case : 2

O	O
P	
	R
M	M
R	
	P

Box Q is kept just above box S, but is kept below box T.

Case : 1 Case : 2

T	O
O	T
P	R
Q	T
S	M
M	Q
	S
R	P

Box N is not kept near box M.
Case 1: is eliminated.

~~Case : 1 Case : 2~~

T	O
O	N
P	R
Q	T
S	M
M	Q
	S
R	P

Q31 Text Solution:

There are four boxes between P and R.

Case : 1 Case : 2

P	R
R	P

There are two boxes between P and M.

Case : 1 Case : 2

P	R
	M
M	
R	P

Box O is kept four boxes above box M.



Case : 1 Case : 2

O	O
P	
	R
M	M
R	
	P

Box Q is kept just above box S, but is kept below box T.

Case : 1 Case : 2

T	O
O	T
P	R
Q	T
S	M
M	Q
	S
R	P

Box N is not kept near box M.
Case 1: is eliminated.

~~Case : 1 Case : 2~~

T	O
O	N
P	R
Q	T
S	M
M	Q
	S
R	P

Q32 Text Solution:

There are four boxes between P and R.

Case : 1 Case : 2

P	R
R	P

There are two boxes between P and M.

Case : 1 Case : 2

P	R
	M
M	
R	P

Box O is kept four boxes above box M.



Case : 1 Case : 2

O	O
P	
	R
M	M
R	
	P

Box Q is kept just above box S, but is kept below box T.

Case : 1 Case : 2

T	O
O	T
P	R
Q	T
S	M
M	Q
	S
R	P

Box N is not kept near box M.
Case 1: is eliminated.

~~Case : 1 Case : 2~~

T	O
O	N
P	R
Q	T
S	M
M	Q
	S
R	P

Q33 Text Solution:

There are four boxes between P and R.

Case : 1 Case : 2

P	R
R	P

There are two boxes between P and M.

Case : 1 Case : 2

P	R
	M
M	
R	P

Box O is kept four boxes above box M.



Case : 1 Case : 2

O	O
P	
	R
M	M
R	
	P

Box Q is kept just above box S, but is kept below box T.

Case : 1 Case : 2

T	O
O	T
P	R
Q	T
S	M
M	Q
	S
R	P

Box N is not kept near box M.
Case 1: is eliminated.

~~Case : 1 Case : 2~~

T	O
O	N
P	R
Q	T
S	M
M	Q
	S
R	P

Q34 Text Solution:

There are four boxes between P and R.

Case : 1 Case : 2

P	R
R	P

There are two boxes between P and M.

Case : 1 Case : 2

P	R
	M
M	
R	P

Box O is kept four boxes above box M.



Case : 1 Case : 2

O	O
P	
	R
M	M
R	
	P

Box Q is kept just above box S, but is kept below box T.

Case : 1 Case : 2

T	O
O	T
P	R
Q	T
S	M
M	Q
	S
R	P

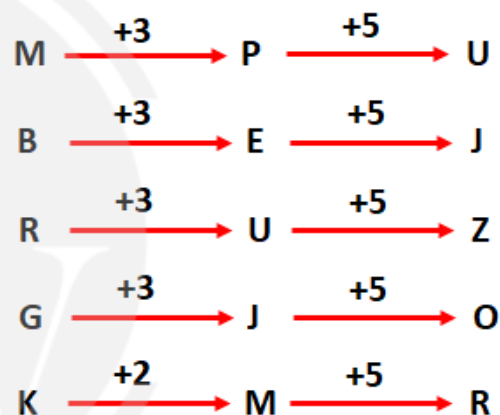
Box N is not kept near box M.
Case 1: is eliminated.

~~Case : 1 Case : 2~~

T	O
O	N
P	R
Q	T
S	M
M	Q
	S
R	P

Q35 Text Solution:

Logic :- +3 then +5

**Q36 Text Solution:**

$$\begin{aligned}
 &37.5\% \text{ of } 480 + 33.33\% \times 449 = ? \\
 &+ 16.66\% \times 239 \\
 &37.5\% \text{ of } 480 + 33.33\% \times 450 = ? \\
 &+ 16.66\% \times 240 \\
 &\frac{3}{8} \text{ of } 480 + \frac{1}{3} \times 450 = ? + \frac{1}{6} \times 240 \\
 &180 + 150 = ? + 40 \\
 &330 - 40 = ? \\
 &? = 290
 \end{aligned}$$

Hence option 290 is the right answer.

Q37 Text Solution:

$$\begin{aligned}
 (36 + ?) \times 9 &= 49.95 \times 19.95 - 24.99 \\
 &\times 14.12 \\
 \text{or, } 324 + 9 \times ? &\approx 50 \times 20 - 25 \times 14
 \end{aligned}$$



$$\text{or, } 9 \times ? \approx 1000 - 350 - 324 = 326$$

$$? = \frac{326}{9} = 36$$

Hence option 36 is the right answer.

Q38 Text Solution:

$$57\% \text{ of } 394 - 2.5\% \text{ of } 996 = ?$$

$$\frac{57 \times 394}{100} - \frac{2.5 \times 996}{100} = ?$$

$$224.58 - 24.9 = 199.68 \approx 200$$

Hence option 200 is the right answer

Q39 Text Solution:

$$36.15 \div 3.02 + ? = 177.96 - 18.98$$

$$36 \div 3 + ? = 178 - 19$$

$$? = 159 - 12 = 147$$

Hence option 147 is the right answer.

Q40 Text Solution:

$$10.02 \times 11.99 - 76.98 \div 10.96 = ?$$

$$+ 52.99$$

$$10 \times 12 - 77 \div 11 = ? + 53$$

$$120 - 7 = ? + 53$$

$$? = 113 - 53 = 60$$

Hence option 60 is the right answer.

Q41 Text Solution:

Ans. 33.1%

Let P be the initial population in 1990.

Population in 2000 would be $P \times 1.1 = 1.1P$

the population in 2010 would be
 $= 1.1 \times (1.1P) = 1.21P$

the population in 2020
 $= 1.1 \times (1.21P) = 1.331P$

increased population from 1990-2020 is:

$$\frac{(1.331P - P)}{P} \times 100\%$$

$$= 33.1\%$$

So, the overall increased population from 1990-2020 was 33.1%.

Q42 Text Solution:

$$\text{CP of rice costing 9.50 per kg} = 60 \times 9.50 = 570$$

$$\text{CP of rice costing 8.50 Per kg} = 60 \times 8.50 = 510$$

$$\text{Total CP} = 60 \times 9.50 + 60 \times 8.5 = 1080$$

$$\text{Total SP} = 120 \times 8.90 = 1068$$

$$\text{Loss} = \text{CP} - \text{SP} = 1080 - 1068 = 12$$

Q43 Text Solution:

4 years ago, let sum of age of four students = x

Therefore, Then principal's age (4 years ago) = 2x

Principal's age (after 8 years) = 2x + 8

Sum of the ages of 4 students (8 years hence)
 $= x + (8 \times 4) = x + 32$

Therefore, according to the question

$$2x + 8 = x + 32$$

$$x = 24 \text{ years}$$

Therefore, present ages of the Principal = (2x + 4) years

$$= (24 \times 2) + 4$$

$$= 48 + 4 = 52 \text{ years}$$

Q44 Text Solution:

Let the speed of stream = 'x' km/h

So, the speed of boat in still water = (x + 4) km/h

Downstream speed of the boat = (2x + 4) km/h

And upstream speed of the boat = (x + 4 - x) = 4 km/h

From the question:

$$\frac{3}{4} = \frac{2}{2x + 4} \times \frac{300}{100}$$

$$x + 2 = 4$$

$$x = 2$$

Downstream speed of the boat = 2 × 2 + 4 = 8 km/h

So, downstream distance covered by the boat in 45 minutes:

$$\frac{8 \times 45}{60} = 6 \text{ km}$$

Q45 Text Solution:

Time taken by A, B and C are 12 days, 18 days and 27 days

$$\text{Efficiencies A : B : C} = \frac{1}{12} : \frac{1}{18} : \frac{1}{27} = 9 : 6 : 4$$

$$\text{Work done on first day} = 9 + 6 = 15$$

$$\text{Work done on 2nd day} = 6 + 4 = 10$$

$$\text{Work done on 3rd day} = 9 + 4 = 13$$



Total work = $9 \times 12 = 108$ unit
 Work done in 3 days is 38 unit
 Work done in 6 days is 76 unit
 7th day..... $76 + 15 = 91$ unit
 8th day $81 + 10 = 101$ unit
 Rest work is 7 unit done by A and C in $\frac{7}{13}$ days
 So the total time taken = $8 + \frac{7}{13} = 8\frac{7}{13}$

Q46 Text Solution:

AQT,

Let D km be the distance traveled

$$\frac{D}{20} - \frac{D}{30} = 4$$

$$\frac{3D - 2D}{60} = 4$$

Distance covered D = 240 km

Required distance = $240 \times 3 = 720$ km.

Q47 Text Solution:

If investment are in the ratio a:b:c and duration are in the ratio x:y:z

Then the profit would be distributed in the ratio = ax:by:cz

Let the investment of A,B and C be 5x, 8x and 9x respectively

The ratio of A,B and C =

$$(5x \times 4 + 5x \times \frac{110}{100} \times 8) : (8x \times 4 + 8x \times \frac{120}{100} \times 8) : (9x \times 12)$$

$$= 16:27:27$$

Sum of ratios = 60

Share of C = $(27/60) \times 36000 = \text{Rs. } 16200$

Q48 Text Solution:

$$\sqrt{1681} + 42 - 93 = -? + 24$$

$$41 + 42 - 93 = -? + 24$$

$$? = 10 + 24$$

$$? = 34$$

Hence option 34 is the right answer.

Q49 Text Solution:

$$256 + \sqrt{1024} + \sqrt{196} = ?^2 + 13$$

$$256 + 32 + 14 = ?^2 + 13$$

$$302 - 13 = ?^2$$

$$?^2 = 289$$

$$? = 17$$

Hence option 17 is the right answer.

Q50 Text Solution:

$$\sqrt{196} + 22 = 49 - ?$$

$$14 + 22 = 49 - ?$$

$$? = 49 - 36$$

$$? = 13$$

Hence option 13 is the right answer.

Q51 Text Solution:

$$\frac{1}{2} \text{ of } \frac{2}{8} \text{ of } ? = 32 - 14$$

$$\frac{1}{2} \times \frac{2}{8} \times ? = 18$$

$$\frac{1}{8} \times ? = 18$$

$$? = 144$$

Hence option 144 is the right answer.

Q52 Text Solution:

$$216 + 32 \times 4.5 - \sqrt{324} = ? \times 19$$

$$\Rightarrow 216 + 144 - 18 = ? \times 19$$

$$\Rightarrow ? \times 19 = 342$$

$$? = 18$$

Q53. Text Solution:

General Solution:

Company	Total Employees	Males	Females
A	450	250	200
B	300	140	160
C	320	180	140
D	440	200	240
E	360	160	200

Total number of employees in company A = 450

Number of male employees in company A = 250

Number of female employees in company A = 200

Required ratio = $250 : 200 = 5 : 4$

Q54. Text Solution:

The sum of the male employees in companies B and C = $140 + 180 = 320$

The Sum of the female employees in companies D and E = $240 + 200 = 440$

Required ratio = $320 : 440 = 8 : 11$

Q55. Text Solution:

Number of employees in company D = 440

Number of male employees in company D = 200

Number of female employees in company D = 240

The number of male employees is increased by 20%

The number of male employees in company D becomes = $200 \times \frac{120}{100} = 240$

The number of female employees is decreased by 25%

The number of female employees in company D becomes = $240 \times \frac{75}{100} = 180$

Difference = $240 - 180 = 60$

Q56. Text Solution:

Number of female employees in companies B and C = $160 + 140 = 300$

Number of male employees in company A = 250

Required ratio = $300 : 250 = 6 : 5$

Q57. Text Solution:

Number of male employees in company E = 160

Number of female employees in company E = 200

Number of male employees retired = $160 \times \frac{1}{4} = 40$

Number of female employees retired = $200 \times \frac{1}{5} = 40$

Total number of employees = $(160 - 40) + (200 - 40) = 280$

Q58. Text Solution:

Pattern of the series is as follows :

$$960 - (11)^2 = 839$$

$$839 - (9)^2 = 758$$

$$758 - (7)^2 = 709$$

$$709 - (5)^2 = \mathbf{684}$$

$$684 - (3)^2 = 675$$

$$? = 684$$

Q59. Text Solution:

Pattern of the series is as follows :

$$10 \times 1 + 7 = 17$$

$$17 \times 2 + 14 = 48$$

$$48 \times 3 + 21 = 165$$

$$165 \times 4 + 28 = 688$$

$$688 \times 5 + 35 = 3475$$

$$3475 \times 6 + 42 = 20892$$

Q60. Text Solution:

Pattern of the series is as follows :

$$37 + 22 \times 1 = \mathbf{59}$$

$$59 + 22 \times 2 = 103$$

$$103 + 22 \times 3 = 169$$

$$169 + 22 \times 4 = 257$$

$$257 + 22 \times 5 = 367$$

$$? = 59$$

Q61. Text Solution:

Pattern of the series is as follows :

$$3 \times 2 - 1 = \mathbf{5}$$

$$5 \times 3 - 1 = 14$$

$$14 \times 4 - 1 = 55$$

$$55 \times 5 - 1 = 274$$

$$274 \times 6 - 1 = 1643$$

$$? = 5$$

Q62. Text Solution:

There are two series First ,

$$61 - 1 = \mathbf{60}$$

$$60 - 1 = 59$$

$$59 - 1 = 58$$

$$\text{Second, } 72 + 1 = 73$$

$$73 + 1 = 74$$

$$? = 60$$



Q63. Text Solution:

Total employees in Accenture = $610 \times 35 = 21350$

Total employees in CTS = $42 \times 525 = 22050$

Female employees in Accenture = $\frac{50}{100} \times 21350 = 10675$

Female employees in CTS = $\frac{60}{100} \times 22050 = 13230$

Required Total = $10675 + 13230 = 23905$

Q64. Text Solution:

Total employees in Accenture = $610 \times 35 = 21350$

Total employees in CTS = $42 \times 525 = 22050$

Total employees in WIPRO = $50 \times 420 = 21000$

Total employees in TCS = $44 \times 500 = 22000$

Total employees in Google = $40 \times 470 = 18800$

Total employees in all five companies
= $21350 + 22050 + 21000 + 22000 + 18800$
= 105200

Required Average = $\frac{105200}{5} = 21040$

Q65. Text Solution:

Female employees in TCS = $\frac{40}{100} \times 22000 = 8800$

Male employees in CTS = $\frac{40}{100} \times 22050 = 8820$

In 2021,

Female employees in TCS =
 $\left\{ \frac{20}{100} \times 8800 + 8800 \right\} = 10560$

Male employees in CTS =
 $\left\{ \frac{10}{100} \times 8820 + 8820 \right\} = 9702$

Required Total = $10560 + 9702 = 20262$

Q66. Text Solution:

Total employees in WIPRO = $50 \times 420 = 21000$

Total employees in Google = $40 \times 470 = 18800$

Required difference = $21000 - 18800 = 2200$

Q67. Text Solution:

Total employees in Accenture = $610 \times 35 = 21350$

Total employees in CTS = $42 \times 525 = 22050$

Total employees in Google = $40 \times 470 = 18800$

Female employees in Accenture = $\frac{50}{100} \times 21350 = 10675$

Female employees in CTS = $\frac{60}{100} \times 22050 = 13230$

Female employees in Google = $\frac{80}{100} \times 18800 = 15040$

Required Total = $10675 + 13230 + 15040 = 38945$

Q68. Text Solution:

Simple Interest (S.I.)

$$= \frac{\text{Principal} \times \text{Time} \times \text{Rate}}{100}$$

According to the question,

$$\frac{2200 \times 5 \times R}{100 \times 2} - \frac{2000 \times 5 \times R}{100 \times 2} = 25$$

$$55R - 50R = 25$$

$$5R = 25$$

$$R = 25 \div 5 = 5\%$$

Q69. Text Solution:

Let income of person = x

Expenses on food = $\frac{x}{3}$

Remaining income = $x - \frac{x}{3} = \frac{2x}{3}$

Income spent on buying books = $\frac{2x}{3} \times \frac{1}{4+1}$
= $\frac{2x}{15}$

Given, $\frac{2x}{15} = 2400$

$$X = 2400 \times \frac{15}{2} = 18000$$

Q70. Text Solution:

Suppose a container contains x units of liquid from which y units are taken out and replaced by water.

After n operations, the quantity of pure liquid. =
 $x \left(1 - \frac{y}{x}\right)^n$

Here, $x = 60$, $y = 6$, & $n = 3$

So, Remaining orange juice = $60 \left(1 - \frac{6}{60}\right)^3 = 43.74$ liters

Q71. Text Solution:

Birsa Munda is depicted as a figure leading a violent movement against the British administration. This is evident from his leadership in the uprising characterized by spontaneous violence and aggression targeting churches, police stations, and the British establishment.

Explanation of incorrect options:



(a) Incorrect: Birsa Munda's role wasn't that of a religious preacher advocating peaceful resistance. He led a movement with aggressive actions.

(c) Incorrect: Birsa wasn't portrayed as a passive observer; rather, he actively led the violent protests.

(d) Incorrect: There's no indication that Birsa sought compromises with the British; instead, he mobilized the Mundas against them.

Q72. Text Solution:

The passage indicates that the British policies, particularly their land and forest policies, resulted in the disintegration of the tribal agrarian order. These policies led to the loss of land rights, conflicts over forests, and erosion of traditional ways of life for the Mundas.

Explanation of incorrect options:

(a) Incorrect: British policies didn't strengthen tribal solidarity; rather, they created rifts between different groups (converts and non-converts).

(b) Incorrect: The impact of British policies wasn't about preserving traditional customs and beliefs but disrupting them.

(d) Incorrect: British policies didn't contribute to socio-economic stability; instead, they caused socio-economic upheaval among the Mundas.

Q73. Text Solution:

"Birsa Munda: The Revolutionary Leader of Indigenous Uprising" is the most suitable title as it encapsulates the central figure, Birsa Munda, and his role as a leader in the indigenous uprising against British exploitation and policies. The passage extensively covers Birsa's leadership, the uprising, and its repercussions.

Explanation of incorrect options:

(a) Incorrect: While the passage touches upon the impact of British policies, the focus isn't solely on the resilience of the Munda society but more on Birsa's leadership and the uprising.

(c) Incorrect: The passage discusses missionary activities, but it's not the primary focus to warrant this title.

(d) Incorrect: Although forest policies and land exploitation are discussed, they are parts of a broader context within the passage, not the central theme deserving of the title.

Q74. Text Solution:

The uprising led to legislative changes like the Tenancy Amendment Act of 1903, which prohibited or restrained Adivasi land transfer, and the Chhotanagpur Tenancy Act VI 1908, safeguarding various Munda rights. These were outcomes of the movement.

Explanation of incorrect options:

(a) Incorrect: The uprising didn't entirely eradicate British influence but prompted legislative actions.

(b) Incorrect: There's no mention of establishment of new religious practices post-uprising.

(d) Incorrect: The uprising reinforced tribal identity and solidarity rather than weakening it.

Q75. Text Solution:

The tone of the passage leans towards being critical and accusatory towards the British administration for their exploitative policies and actions, which led to the suffering and upheaval of the Munda society. It highlights the negative impact of British policies on the Mundas.

Explanation of incorrect options:

(a) Incorrect: While the passage contains historical details, it is not entirely objective and



analytical; it expresses a bias against the British administration.

(c) Incorrect: While it acknowledges Birsa Munda's leadership, the tone isn't solely reverential or idolizing; it discusses both positive and negative aspects.

(d) Incorrect: The passage isn't detached or indifferent; it expresses concern and highlights the sufferings of the Mundas due to British policies.

Q76. Text Solution:

(a) A passive observer of events

Explanation: This choice contradicts the depiction of Birsa Munda as a "dangerous agitator." Being a passive observer wouldn't align with his role as a leader inciting rebellion against the British administration.

(b) A revered spiritual leader

Explanation: This option contrasts with the characterization of Birsa Munda as a "dangerous agitator." While he had a flute tied to his waist, which could connote spiritual or cultural significance, it doesn't fit with the latter description of being a dangerous agitator.

(c) A harmonious mediator between conflicting parties

Explanation: This choice goes against the notion of Birsa Munda as a "dangerous agitator." It suggests a role of peacekeeping rather than inciting agitation or rebellion against the British administration.

(d) An indifferent bystander to societal issues

Explanation: This option contradicts the portrayal of Birsa Munda as a "dangerous agitator." Describing him as an indifferent bystander doesn't align with the subsequent characterization as a threat to the British administration.

These options are incorrect as they conflict with the dual portrayal of Birsa Munda as both suave and timid, yet a "dangerous agitator" or a great threat to the British administration. The correct choice, (e) a great threat to the British administration, fits in line with the contrasting elements of Birsa Munda's character as described in the passage.

Q77. Text Solution:

The error is specifically in part (b) where the verb form "drag" should be in the past tense to match the verb tense in the rest of the sentence.

(a) Modern civilisation intruded into their lives and: This part of the sentence seems grammatically correct. It introduces the action of intrusion by modern civilization into the lives of the mentioned group.

(c) Mahasweta Devi and many others like her: This part of the sentence is grammatically correct. It introduces the individuals who hold a belief contrary to the forced assimilation of the Adivasis into the so-called mainstream.

(d) believe Adivasis are the mainstream in India.: This part of the sentence is grammatically correct. It completes the thought by indicating the contrasting belief held by Mahasweta Devi and others, emphasizing that Adivasis are the actual mainstream in India.

Q78. Text Solution:

The correct arrangement is (e) EBCDA.

The correct arrangement, (e) EBCDA, makes sense as it begins by introducing the concept of 'reserve forest' and 'protected forest' and how these Acts denied traditional rights to the Adivasis. Part B sets the stage for explaining the denial of rights, followed by C and D specifying the denied traditional rights, and finally, part A



elaborates on specific activities related to the traditional rights.

Now, let's see why the other options are not correct:

(a) ACDBE: This arrangement starts with mentioning 'roots and reclamation of lands for cultivation' abruptly, which doesn't flow logically from the subsequent parts. It lacks a clear introduction or context for these actions.

(b) BACDE: Initiating the sentence with 'protected forest' doesn't form a logical flow. It's essential to introduce the concept before specifying its impact, which is done in the correct arrangement.

(c) DCBEA: Beginning with 'grazing of cattle, collecting fruits and ' without introducing the context doesn't provide a clear flow. It's crucial to establish the broader concept before delving into specific rights.

(d) CDEBA: Starting with 'their traditional rights to collect free firewood' again lacks a clear introduction or context. It doesn't provide a logical sequence to explain how these rights were denied due to the concepts introduced later in the sentence.

Q79 Text Solution:

C-E:

These two fragments when combined together do not form a grammatically correct statement as the word 'inaccurately' is incorrectly used here. It is to be replaced with 'inaccurate' because we need an adjective here to modify the noun 'findings'. Hence, the options containing this pair can be eliminated.

The combined sentence would be-

If integrity of the data fields is not ensured, we will have inaccurate audit findings.

A-F:

These two fragments can be combined together to form a meaningful and grammatically correct statement. There is also no grammatical error in any of these fragments.

The combined sentence would be-

Developers will have to submit their systems for review and approval before releasing them commercially.

B-D:

These two fragments can be combined together to form a meaningful and grammatically correct statement. There is also no grammatical error in any of these fragments.

The combined sentence would be-

A multifaceted approach may be required to mitigate bias and ensure the safety and accuracy of AI models.

Therefore, A-F and B-D make valid combinations.

Hence, option (b) is the correct choice.

Q80 Text Solution:

C-F: These two fragments can be combined together to form a meaningful and grammatically correct statement. There is also no grammatical error in any of these fragments.

The combined sentence would be-

One solution is to use a digital camera that creates photographs by capturing light coming from a source using a sensor.

A-E:

These two fragments when combined together do not form a grammatically correct statement as the word 'produce' is incorrectly used here. It is to be replaced with 'produces' because 'It' is a singular pronoun so singular form of the verb will be used. Hence, the options containing this pair can be eliminated.

The combined sentence would be-



When the infrared beam strikes the noble gas atoms, it produces multiple overtones.

B-D:

These two fragments when combined together do not form a grammatically correct statement as the word 'extreme' is incorrectly used here. It is to be replaced with 'extremely' because we need an adjective 'extremely' to modify the noun 'light pulses'. Hence, the options containing this pair can be eliminated.

The combined sentence would be-

Attosecond science deals with the production of extremely short light pulses and using them to study superfast processes.

Therefore, C-F makes a valid combination.

Hence, option (d) is the correct choice.

Q81 Text Solution:

C-E:

These two fragments when combined together do not form a grammatically correct statement as the word 'raising' is incorrectly used here. It is to be replaced with 'rising' because raising means 'to lift something up' while rising means 'advancing, ascending or mounting'. Hence, the options containing this pair can be eliminated.

The combined sentence would be-

Informal workers face mental distress due to accumulating debt and rising health-care costs, which are intertwined and mutually reinforcing.

A-F:

These two fragments can be combined together to form a meaningful and grammatically correct statement. There is also no grammatical error in any of these fragments. The combined sentence would be-

Informal workers, despite their significant contribution to national income are perennially exposed to various economic, physical and mental vulnerabilities.

B-D:

These two fragments can be combined together to form a meaningful and grammatically correct statement. There is also no grammatical error in any of these fragments.

The combined sentence would be-

The absence of proper financial and health-care security among the working elderly can severely impact their physical and mental health, aggravating their vulnerability.

Therefore, B-D and A-F make valid combinations.

Hence, option (c) is the correct choice.

Q82 Text Solution:

C-F:

These two fragments when combined together do not form a grammatically correct statement as the word 'its' is incorrectly used here. It is to be replaced with 'their' because 'their' will be used for the noun 'nations'. Hence, the options containing this pair can be eliminated.

The combined sentence would be-

Nations worldwide are grappling with the need to update their legal frameworks to adapt to the evolving digital landscape.

A-E:

These two fragments can be combined together to form a meaningful and grammatically correct statement. There is also no grammatical error in any of these fragments. The combined sentence would be-

The primary motivation behind the DIA is to bring India's regulatory landscape in sync with



the digital revolution of the 21st century.

B-D:

These two fragments can be combined together to form a meaningful and grammatically correct statement. There is also no grammatical error in any of these fragments.

The combined sentence would be-

The proposed DIA encompasses a spectrum of significant provisions aimed at addressing the ever-evolving digital landscape.

Therefore, B-D and A-E make valid combinations.

Hence, option (c) is the correct choice.

Q83 Text Solution:

C-D:

These two fragments can be combined together to form a meaningful and grammatically correct statement. There is also no grammatical error in any of these fragments.

The combined sentence would be-

The increasing demand for Li-ion batteries has also brought to the fore the need for an organised battery recycling industry in place.

A-F:

These two fragments can be combined together to form a meaningful and grammatically correct statement. There is also no grammatical error in any of these fragments.

The combined sentence would be-

While the first challenge of a strong reverse supply chain would be the collection of the batteries, the next step would be transporting them safely to the recycler.

B-E:

These two fragments when combined together do not form a grammatically correct statement as the word 'comes' is incorrectly used here. It is

to be replaced with 'come' because 'they' is used for batteries which is plural in nature so plural form of the verb will be used. Hence, the options containing this pair can be eliminated.

The combined sentence would be-

Li-ion batteries even in a discharging state are prone to catching fire if they come in contact with moisture and therefore transporting them is a riskier business.

Therefore, C-D and A-F make valid combinations.

Hence, option (a) is the correct choice.

Q84. Text Solution:

The RBI in general plays the key role in setting the inflation target and meeting the "expectations" of the economic agents. Therefore, 'expectations' is the correct word to fill the blank A. Hence the correct option choice is (d). RBI does not play the role in setting budget, strategy, reliance or threshold for the economic agents. All other words are contextually and grammatically incorrect.

(a) Budget: Financial plan.

(b) Strategy: Goal-oriented plan.

(c) Threshold: Limiting point.

(d) Expectations: Anticipated outcomes.

(e) Reliance: Dependence or trust.

Q85. Text Solution:

Here 'credibility' is the correct word to be used as the context of the sentence states that the new terminology issued by the RBI will create 'vagueness' in the inflation target framework. All other words given in the options cannot be used in this context with the term 'inflation'. Hence, the correct option choice is (b).

(a) Foundation: Base or groundwork.

(b) Credibility: Trustworthiness or reliability.

(c) Profitability: Ability to generate profit or financial gain.



(d) Probability: Likelihood or chance of something happening.

(e) Conformity: Act of complying or adhering to rules or norms.

Q86. Text Solution:

The correct word is 'achieved' as we generally use the word 'achieve' with the word target. It is stated that for some time the legally mandated target for achieving 4% CPI (consumer price index) inflation target with band of (+/-2) was not achieved. All other words are incorrect to use with the word 'target'. Hence, the correct option choice is (e).

(a) Sustained: Maintained or continued over a period of time.

(b) Confirmed: Verified or validated as true or accurate.

(c) Issued: Officially released or distributed.

(d) Noticed: Observed or perceived.

(e) Achieved: Successfully accomplished or attained.

Q87. Text Solution:

In the context of the Reserve Bank of India (RBI) and monetary policy, the term "threshold" refers to a specific level or limit set for a particular economic indicator. This indicator is usually related to some important aspect of the economy, such as inflation or economic growth. When the RBI talks about a threshold, it means that they have identified a certain value for that economic indicator, and they are closely monitoring it. If the indicator's value crosses or goes beyond that threshold, it may trigger certain actions or measures by the RBI.

All other words are grammatically and contextually incorrect in the context of the passage. Hence, the correct option choice is (b).

(a) Ceiling: The upper limit or maximum.

(b) Threshold: The minimum level or point at which something begins or occurs.

(c) Bound: To limit or restrict; a limit or boundary.

(d) Adjustment: A modification or change made to improve or align with specific criteria.

(e) Band: A range or grouping of values or levels.

Q88. Text Solution:

The context of the sentence states that between January 2022 and March 2023, CPI inflation was 6.6 percent on average. Since then, inflation has decreased; the CPI for the period of March to May 2023 averaged 4.9 percent. Therefore 'inflation' is the correct word to fill the blank E. All other given words are contextually incorrect. Hence, the correct option choice is (c).

(a) Stagflation: Stagnant economy with inflation.

(b) Recession: Economic downturn, reduced activity.

(c) Inflation: Rising prices, devalued currency.

(d) Economy: Production, consumption, trade system.

(e) Funding: Providing financial resources, capital.

Q89. Text Solution:

'Geared' is the correct word to fill the blank 'F'.

To achieve the inflation target, RBI must frame the policy accordingly and must model the policy actions to achieve the inflation target. Therefore, 'geared' is the correct word to fill the blank (F). All other given words are contextually incorrect. Hence, the correct option choice is (a).

(a) Geared: To organize or to tailor

(b) Framed: Structured or presented systematically.

(c) Tightened: Made more secure or restricted.

(d) Availed: Made use of or utilized.



(e) Prevented: Stopped from happening or avoided.

Q90 Text Solution:

Rule of Grammar:

Prepositions of Time: "Since" and "For".

The words "for" and "since" are used in sentences where the speaker wants to talk about something that started in the past and continues into the present.

The preposition "for" is used to talk about an amount of time or space. The amount of time could be seconds, minutes, hours, days, months or even years. The amount of time does not need to be exact.

For is used for "duration"

Since is used to denote "Point of start"

The preposition "since" is used to refer to a point of time. "Since" can refer to a point after a specific time or event in the past or it can refer to a particular point beginning sometime in the past and continuing until the present time. The particular point in time could be anything - last Tuesday, 2008 or midnight.

NOTE: "for" is used to specify a period of time while "since" is used to specify a particular point in time.

NOTE: Only the Perfect Tense or Perfect Continuous Tense is used before "since" and "for" when they denote time.

Examples:-

It has been raining since 8 a.m. [Present Perfect Continuous Tense]

I have had this painting since 1965. [Present Perfect Tense]

NOTE: "since" is always followed by "Simple Past" tense.

Examples: -

She had been waiting for him since the time I **had completed** my highschool. [Incorrect]

He had been waiting for her since the time I **completed** my studies. [Correct]

Thus the correct sentence is:

The company **has maintained** its position as a market leader in the tech industry **for over four decades**, constantly innovating and introducing groundbreaking products that have shaped the course of how we live and work.

Hence, the correct option is (c).

Q91 Text Solution:

Rule of Grammar:

The first rule of conditional sentences states that when the condition in the sentence is expressed in the simple present tense, the result or consequence will be formed using the modal present form (such as "may," "will," "shall," "can," "must," or "should") followed by the base form (V1) of the verb.

In the given sentence, 'improved' will be replaced by 'improve'.

Thus, the correct sentence is:

If they practice regularly and focus intensely on their weaknesses with determination, they can **improve** significantly on the field.

Hence, the correct option choice is (d).

Q92 Text Solution:

The word 'covered' will be replaced by 'covers' as the sentence talks about the present. The word 'provided' will be replaced by 'providing' to maintain the parallelism with the other verb "keeping".

Thus, the correct sentence is:



The news website **covers** the most recent technological advancements, **providing** readers with up-to-date information and keeping them engaged in the world of technology.

Hence, the correct option choice is (b).

Q93 Text Solution:

The helping verb of the present tense, 'do & does' follows the first form of helping verb. This rule applies only when the do/does act as a helping verb. But when do/does act as a 'main verb' then this rule is not applicable.

The sentence is incorrect because 'does' & 'do' act as a main verb. Also, 'ensured' will be changed to 'ensuring' as here we need present participle to make the sentence correct.

The correct sentence is:

She **does** her daily exercise routine diligently and follows a balanced diet, **ensuring** she stays fit and healthy.

Hence, the correct option is (b).

Q94 Text Solution:

There are some words with which we use 'Present Perfect Tense'.

- Ever
- Never
- Already
- So far
- Yet
- Now
- Just
- Uptil now
- Recently
- Lately**

Therefore, in this sentence the present perfect tense will be used.

The present perfect tense is a verb tense used to express actions or events that occurred in the past but have a connection or relevance to the present. It is formed by using the auxiliary verb "have" (in the present tense) followed by the past participle of the main verb.

The words, such as "ever," "never," "already," "so far," "yet," "now," "just," "uptil now," "recently," and **"lately,"** are often used in conjunction with the present perfect tense to indicate specific time frames or emphasize the connection to the present.

Thus, the correct sentence is:

Lately, she **has experienced** a significant improvement in her tennis skills due to consistent and dedicated regular practice.

Hence, the correct option choice is (c).

Q95 Text Solution:

The misspelled word is 'intellectual' whereas the correct spelling is 'intellectual'. Hence, the correct option choice is (d).

Q96 Text Solution:

The misspelled word is 'curriculum' whereas the correct spelling is 'curriculum'. Hence, the correct option choice is (b).

Q97 Text Solution:

The misspelled word is 'Phlanthropic' whereas the correct spelling is 'Philanthropic'. Hence, the correct option choice is (b).

Q98 Text Solution:

The misspelled word is 'aclaim' whereas the correct spelling is 'acclaim'. Hence, the correct option choice is (a).



Q99 Text Solution:

As all the highlighted words are correct, the correct option choice is (e).

Q100 Text Solution:

The misspelled word is 'articulaton' whereas the correct spelling is 'articulation'. Hence, the correct option choice is (d).

[Android App](#)[iOS App](#)[PW Website](#)