

SBI PO Prelims Full Length Mock Test 2 (PYQ)

Directions (1-6) Read the following passage and answer the given questions.

Read the following sentences carefully and arrange them meaningfully.

A. According to functionaries of central universities and technical institutes, the fact that the Higher Education Financing Agency (HEFA) fell short of the projections even before the pandemic indicates that institutes are wary of taking loans due to pre-existing weak state of finances.

B. Construction activities were closed and educational institutions were not in a position to undertake new projects.

C. A projection of Rs 1,00,000 crore of investment was made considering all types of institutions falling under various Higher Education Financing Agency (HEFA) windows.

D. In order to address the requirements of various categories of institutions, five financial windows were created under Higher Education Financing Agency (HFFA).

E. There was a huge increase in sanction of loan from Rs 1,804.25 crore in 2017-18 to Rs 15,572.56 crore in 2018-19.

F. However, the outbreak of COVID-19, dampened the momentum, as the educational institutions were almost closed for almost two years.

Q1 Which of the following sentences comes FIRST after rearrangement?

- (A) A (B) B
(C) C (D) D

(E) E

Q2 Which of the following sentences comes SECOND after rearrangement?

- (A) F (B) B
(C) C (D) D
(E) E

Q3 Which of the following sentences comes THIRD after rearrangement?

- (A) F (B) B
(C) C (D) D
(E) E

Q4 Which of the following sentences comes FOURTH after rearrangement?

- (A) F (B) B
(C) C (D) D
(E) E

Q5 Which of the following sentences comes FIFTH after rearrangement?

- (A) F (B) B
(C) C (D) D
(E) E

Q6 Which of the following sentences comes SIXTH after rearrangement?

- (A) F
(B) A
(C) C
(D) D
(E) E

Q7 In the following question, a sentence is given with three words marked as (A), (B), and (C). These words may or may not be placed at their



correct places. Five options with different arrangements of these words are given. Mark the option with the correct arrangement as the answer. If no change is required, mark 'No rearrangement required' as your answer.

Built on a **compelling** (A) narrative – the combination of accelerated financial inclusion (bank accounts), ease of identification (Aadhaar) and **economy** (B) (mobile phones) – it is ultimately a bet on the Indian consumer, and the **connectivity** (C), not on government regulations/policies.

- (A) ACB
- (B) CAB
- (C) BCA
- (D) CBA
- (E) No rearrangement required

Q8 In the following question, a sentence is given with three words marked as (A), (B), and (C). These words may or may not be placed at their correct places. Five options with different arrangements of these words are given. Mark the option with the correct arrangement as the answer. If no change is required, mark 'No rearrangement required' as your answer.

Whichever way one slices the data, the reality is, there aren't that many **spending** (A) with significant **consumers** (B) spending capacity, and those with the capacity aren't increasing their **discretionary** (C) as these companies would hope.

- (A) ACB
- (B) CAB
- (C) BCA
- (D) CBA
- (E) No rearrangement required

Q9 In the following question, a sentence is given with three words marked as (A), (B), and (C). These words may or may not be placed at their correct places. Five options with different arrangements of these words are given. Mark the option with the correct arrangement as the answer. If no change is required, mark 'No rearrangement required' as your answer.

While more **spending** (A) are on-board digital payment platforms – Paytm has about 70 million monthly **transacting** (B) users – these numbers suggest that when it comes to consumers with considerable discretionary **consumers** (C), the size of the market shrivels considerably.

- (A) ACB
- (B) CAB
- (C) BCA
- (D) CBA
- (E) No rearrangement required

Q10 In the following question, a sentence is given with three words marked as (A), (B), and (C). These words may or may not be placed at their correct places. Five options with different arrangements of these words are given. Mark the option with the correct arrangement as the answer. If no change is required, mark 'No rearrangement required' as your answer.

While these **constrained** (A) have seen an increase in the number of transacting customers, to what extent the overall customer base for these startups can expand further is **significant** (B) by the number of households in the cohort that has **companies** (C) spending power.

- (A) ACB
- (B) CAB



- (C) BCA
- (D) CBA
- (E) No rearrangement required

Q11 In the question given below, a sentence is given with two blanks that indicate two words are missing, identify the correct pair of words that can fit in the sentence to make it grammatically and contextually correct.

A normal monsoon would _____ inflationary expectations, boost agricultural production and step up rural _____, in the backdrop of pandemic-induced constraints on economic output.

- (A) dampen, demand
- (B) bring, supply
- (C) brought, demand
- (D) dampen, manufacturing
- (E) dampen, culture

Q12 In the question given below, a sentence is given with two blanks that indicate two words are missing, identify the correct pair of words that can fit in the sentence to make it grammatically and contextually correct.

For instance, El Nino-Southern Oscillation (ENSO) is an _____ cycle of change in wind and sea surface temperatures over the tropical eastern Pacific, and the Indian Metrological Department _____ does mention neutral ENSO conditions prevailing.

- (A) seasonal, forecast
- (B) irregular, forecast
- (C) regular, ratings
- (D) ceased, ratings
- (E) seasonal, advertisement

Q13 In the question given below, a sentence is given with two blanks that indicate two words are

missing, identify the correct pair of words that can fit in the sentence to make it grammatically and contextually correct.

Further, indiscriminate encroachment of floodplains and water bodies and routine lack of maintenance of drainage _____ add up to make urban _____ grow ever more severe.

- (A) Industry, flooding
- (B) Company, Streets
- (C) Infrastructure, flooding
- (D) Industry, culture
- (E) Infrastructure, streets

Q14 In the questions given below, there are two blanks. You need to identify the pair of words that can fit the blank correctly and render proper sense to the sentences.

A favourable base effect along with a distinct cooling in international prices of _____ including crude oil and steel amid gathering uncertainty in advanced economies was largely _____ in tempering wholesale price gains.

- (A) communities, active
- (B) commodities, instrumental
- (C) acrimony, helpful
- (D) hegemony, useful
- (E) acrimonious, empirical

Q15 In the questions given below, there are two blanks. You need to identify the pair of words that can fit the blank correctly and render proper sense to the sentences.

A video has surfaced in which the Chinese president _____ confronted the Canadian prime minister on Wednesday, complaining



Trudeau's office had published details of an earlier conversation _____ them.

- (A) apparent, amongst
- (B) inherently, among
- (C) apparently, between
- (D) pertinent, between
- (E) eerily, between

Q16 Direction: From the options given below, select the option which states the correct set of sentences.

A. Every token has a unique identity on the blockchain that allows people to tie unique assets to them.

B. Some industry experts believes that the NFT market has slowed down a bit because of the global uncertainty

C. It is essential for investors to do their research and due diligence for investing in a particular business.

- (A) B and C
- (B) A only
- (C) A and C
- (D) A only B
- (E) C only

Q17 In the following questions, a sentence/ a passage has been divided into four parts out of which one or more than one part may consist of errors. Choose the parts that contain errors using the given alternatives.

A. Many things have been said about the necessity for mandatory iron fortification of foods in India.

B. That it is a 'necessity', 'complementary strategy' to dietary diversity, 'effective' and more loudly now, that it is 'safe'.

C. Given what we now know, and are uncovering, about the risks associated with too much iron,

D. particularly in children, the proclamation of safety must be made careful.

- (A) Only D
- (B) Only C
- (C) Both A and C
- (D) Both B and D
- (E) All are incorrect

Q18 In the following questions, a sentence/ a passage has been divided into four parts out of which one or more than one part may consist of errors. Choose the parts that contain errors using the given alternatives.

A. A NASA spacecraft has officially "touched" the sun, plunging through the unexplored solar atmosphere known as the corona.

B. Scientists have announced the news on Tuesday during a meeting of the American Geophysical Union.

C. The Parker Solar Probe actually flew through the corona in April during the spacecraft's eighth close approach to the sun.

D. Scientists said it took few months to get the data back and then several more months to confirm.

- (A) Only D
- (B) Only C
- (C) Both A and C
- (D) Both B and D
- (E) All are incorrect

Q19 In the following questions, five sentences are given out of which one sentence is wrong. Choose the one that consists of an error and mark that as your answer.

A. The UN, which has prevaricated on Syria, has estimated that more than 80 per cent of Syrians live below the poverty line.



B. Bashar al-Assad, the beleaguered President of Syria, lives to fight another day, having been sworn in as President for a fourth term on Saturday.

C. One major reason for the Soviet Union suffering an economic bust in 1991 was attributed against the Kremlin.

D. President Assad reaffirms his grip on a direly depleted inheritance with a welter of problems that could impede his foreign and domestic policies.

E. All are true

(A) D (B) C

(C) B (D) A

(E) E

Q20 In the following questions, five sentences are given out of which one sentence is wrong. Choose the one that consists of an error and mark that as your answer.

A. Another political problem that has contributed to the melting of Arctic ice sheets are the improved navigability of the northern oceans.

B. The world watches as the United States withdraws from Afghanistan leaving the country in the throes of civil war.

C. The states of North Rhine-Westphalia, Rhineland-Palatinate and Saarland have been the worst affected by the record rainfall, which authorities have called the heaviest in a century.

D. President Xi Jinping's government in Beijing to be "more transparent" even as the medical fraternity has been groping in search for the origins.

E. Across the Atlantic, the weather forecasts have been less than convincing and that has added to the woes of people.

(A) A

(B) B

(C) C

(D) D

(E) E

Q21 In the question given below, two statements and five connectors are given. Only one of the connectors from those given can be used to combine the given two statements into one sentence without changing the meaning. Choose that connector as your answer.

I. Of course, corn breeding and farming innovations may be reducing downside risk, thereby countering adverse climate effects.

II. Increasing weather related production risks are not evident in existing aggregate yield data.

(A) All the same

(B) Nonetheless

(C) By Comparison

(D) In any case

(E) But

Q22 In the question given below, two statements and five connectors are given. Only one of the connectors from those given can be used to combine the given two statements into one sentence without changing the meaning. Choose that connector as your answer.

I. He pointed out that any employee who has tried to claim medical reimbursement would be well aware of the cumbersome procedures and the red tapes involved in getting a reimbursement.

II. Medisep is a cashless insurance scheme, which is fully digitally managed. In the first few weeks itself, 902 claims worth ₹1.89 crores had been settled under Medisep

(A) Above all

(B) Nonetheless

(C) Accordingly

(D) Yet

(E) In contrast



Q23 In the question given below, two statements and five connectors are given. Only one of the connectors from those given can be used to combine the given two statements into one sentence without changing the meaning. Choose that connector as your answer.

I. Vital but Limited, the ETC describes the complementary role of carbon capture, utilisation and storage (CCUS) has

II. Zero-carbon electricity, clean hydrogen and sustainable low-carbon bio resources in delivering a net-zero economy by mid- century. Massive clean electrification is the backbone of global decarbonisation. However, electrification, hydrogen and sustainable low-carbon bioenergy combined cannot reduce gross emissions completely to zero.

- (A) Above all (B) For Instance
(C) Accordingly (D) Yet
(E) Alongside

Directions (24–30) Read the following passage and answer the given questions.

The passage given below is followed by a set of questions. Choose the best answer to each question.

India has taken up the fight against cervical cancer in earnest with the Central government announcing that it will _____ vaccination for girls aged between 9 and 14 years through schools. The decision comes at a critical juncture with a study in The Lancet published this month showing that India accounts for the highest number of cervical cancer cases in Asia, followed by China. More than 58% of all cases of cervical cancer and deaths globally were estimated in Asia with India accounting for 21% of cases and 23% of

deaths, followed by China (18% and 17%). Cervical cancer is a preventable and treatable cancer. It is caused by infection with the human papillomavirus (HPV) and there are vaccines which protect against carcinogenic HPV. With more than 6,00,000 women diagnosed with cervical cancer worldwide in 2020, the World Health Organization laid down several guidelines that countries need to follow to eliminate it as a public health problem. According to the International Agency for Research on Cancer, the WHO has specified that countries must reach and maintain an incidence rate of fewer than 4 new cases of cervical cancer per 1,00,000 women a year. To achieve that goal, it is necessary that 90% of girls will have to be fully vaccinated with the HPV vaccine by the age of 15.

To that end, the government's **intent** to introduce the HPV vaccine in the Universal Immunisation Programme (UIP) is a welcome move. India's immunisation network, as was evident during COVID-19, has worked well, and diseases such as polio and maternal and neonatal tetanus have been eliminated. The UIP is one of the largest public health programmes targeting over 2 crore newborns and 2 crore pregnant women annually, and offers free vaccines for at least 12 diseases. To battle cervical cancer, India is expected to roll out the indigenously developed Cervavac vaccine by mid-2023. It has received the Drugs Controller General of India's approval and has been cleared by the National Technical Advisory Group for Immunisation for use in the UIP programme. The vaccination will be provided primarily through schools, but importantly the government has clarified that girls who do not go to school will be reached



through community outreach and mobile teams. This is a vital step because studies show that there is a link between cervical cancer incidence and human development index values, with progressively lower rates observed as HDI rises. Together with vaccination, screening programmes must be conducted to detect early signs of the disease to allow time for treatment.

Q24 What was the reason for announcing the launch of vaccination by the Central Government?

- (A) As India had the second highest number of cervical cancer cases in Asia.
- (B) Cervical cancer is preventable and treatable disease
- (C) Cervical cancer is caused by human papillomavirus (HPV)
- (D) Both (a) and (b)
- (E) All of these

Q25 What is the aim of the government that must be established or achieved to prevent cervical cancer?

- (A) To vaccinate 90% girls with HPV vaccine by age 15 .
- (B) To reduce the cervical cancer cases and maintain with 4 new cases per 100,000 women,
- (C) To treat the cancer with the research in the vaccine caused by HPV.
- (D) Both (1) and (2)
- (E) All of these

Q26 Which of the following is the tone of the passage?

- (A) Introspective

- (B) Patronizing
- (C) Analytical
- (D) Speculative

- (E) Suggestive

Q27 Which of the following statements underscore the initiatives taken by the government to diagnose cervical cancer?

- (A) To work upon the suggestions of WHO
- (B) To prevent the cases by following the guidelines of WHO
- (C) To make aware the women about the unprecedented times and data
- (D) Human papillomavirus (HPV) vaccine in the Universal Immunisation Programme (UIP)

- (E) All of these

Q28 Which of the following statements best describes the Universal Immunisation Programme (UIP) programme?

- (A) It is one of the largest public health programmes.
- (B) It covers 2 crores newborn and 2 crore pregnant women annually.
- (C) It offers free vaccines for at least 12 diseases.
- (D) Both (a) and (b)
- (E) All of these

Q29 Which of the following phrase can fill the blank given in the passage?

- (A) Let down
- (B) Beat Back
- (C) Ushered in
- (D) Spell out

- (E) Roll out



Q30 Which of the following is an appropriate word that can replace the word 'intent' as given in bold in the passage?

- (A) Urge (B) Support
(C) Endorse (D) Aim

(E) Affirm

Directions (31-35) Read the following passage and answer the given questions.

Study the following information carefully and answer the questions given below.

The given table shows the total number of appliances and the number of Gyser and the % of Mobile sold by five different companies in a month.

Total number electric appliance = Number of gyser sold + Number of Mobile sold + Number of Television sold

Company	P	Q	R	S
%of Mobile sold out of total appliance sold by a company	30%	20%	35%	40%
Number of Gyser	400	520	560	480
Total electric appliance sold by a company	100	208	140	160
	0	0	0	0

Q31 If the number of Television sold by T is half of the number of Television sold by S and the ratio of the number of Television to number of GYSER sold by T is 8 : 11, then find the number of GYSER sold by T ?

- (A) 297 (B) 308
(C) 319 (D) 330
(E) None of these

Q32 The difference between the number of Mobile sold by P and Q together is what percent of the total number of Television sold by Q and R together?

- (A) 7.76%
(B) 18.85%
(C) 26.65%
(D) 15.56%
(E) 3.44%

Q33 Ratio of unsold to sold Mobile by P is 7 : 3. The number of Unsold Mobile by Q is equal to 50% of the Mobile unsold by P and the number of unsold GYSER by Q is 36 more than the number of unsold Mobile by Q, then find the total number of GYSER sold and unsold by Q?

- (A) 386 (B) 906
(C) 600 (D) 520
(E) 526

Q34 The cost price of a Television in P is Rs.2000 and the cost price of a Mobile in R is Rs. 3000 . If 40% of the Television sold by P at the profit of 10% and rest are sold at 40% loss and 60% of the Mobile sold by R at the profit of 5% and rest are sold at the loss of 20%, then find the total revenue collected from P and R ?

- (A) Rs. 2078100
(B) Rs. 1679700
(C) Rs. 1775600
(D) Rs. 197000
(E) Rs. 1876500

Q35 If the total number of appliance sold by T is 80% more than that of S and the number of Television sold by T is average of the number of Television sold by P and R. If the number of Mobile sold by T is 20% more than that of S, then find the number of GYSER sold by T?

- (A) 1700 (B) 1787
(C) 1720 (D) 1855



(E) 1830

Q36 What value should come in the place of (?) in the following number series?

16, 24, 31, 37, 42, ?

- (A) 46 (B) 49
(C) 50 (D) 53
(E) 56

Q37 What value should come in the place of (?) in the following number series?

11, 33, 74, 153, 308, ?

- (A) 596 (B) 617
(C) 648 (D) 652
(E) 678

Q38 What value should come in the place of (?) in the following number series?

2, 7, 17, 32, 52, ?

- (A) 77 (B) 68
(C) 72 (D) 78
(E) 84

Q39 What value should come in the place of (?) in the following number series?

10, 20, 60, 300, ?, 23100

- (A) 1800 (B) 2100
(C) 2400 (D) 2700
(E) 3000

Q40 What value should come in the place of (?) in the following number series?

7, 8, 18, 57, 232, ?

- (A) 1165 (B) 1050
(C) 1060 (D) 1080
(E) 1040

Q41 Ratio of the efficiency of Ram and Shyam is $3 : 2$ and the efficiency of Ram is 200% more than that of Chandan. If Shyam and Chandan together can complete the work in 60 days, in how many days Ram and Shyam together can

complete the work?

- (A) 24 days (B) 30 days
(C) 36 days (D) 42 days
(E) 45 days

Q42 Anirudh, Balmiki and Chandan started the business. The ratio of the investment of Anirudh and Chandan is $4 : 5$ and the investment of Balmiki is 20% more than the investment of Chandan. After 12 months, Balmiki withdrew $33\frac{1}{3}\%$ of his initial investment and after one more year, Chandan added 60% of his initial investment. At the end of 30 months, the total profit of the business is Rs.7200, then find the profit share of Anirudh?

- (A) Rs. 2000
(B) Rs. 2400
(C) Rs. 1800
(D) Rs. 2700
(E) None of these

Q43 The present age of Ankit's father is four times the present age of Ankit. Four years ago, the age of Ankit's father was six times the age of Ankit's age at that time. Ankit's grandfather's age is seven times the present age of Ankit. Find the difference between the present age of Ankit's father and grandfather?

- (A) 20 years (B) 30 years
(C) 15 years (D) 25 years
(E) 35 years

Q44 Ratio of the Marked price to the cost price of the Mobile phone is $9:5$. The shopkeeper allows two successive discounts of 20% and 25% respectively. If the shopkeeper sold it at a single discount of 35% , he would have gained Rs. 180



more. Find the selling price of the mobile phone at a profit of 30% ?

- (A) Rs. 3900 (B) Rs. 3600
(C) Rs. 2400 (D) Rs. 2800

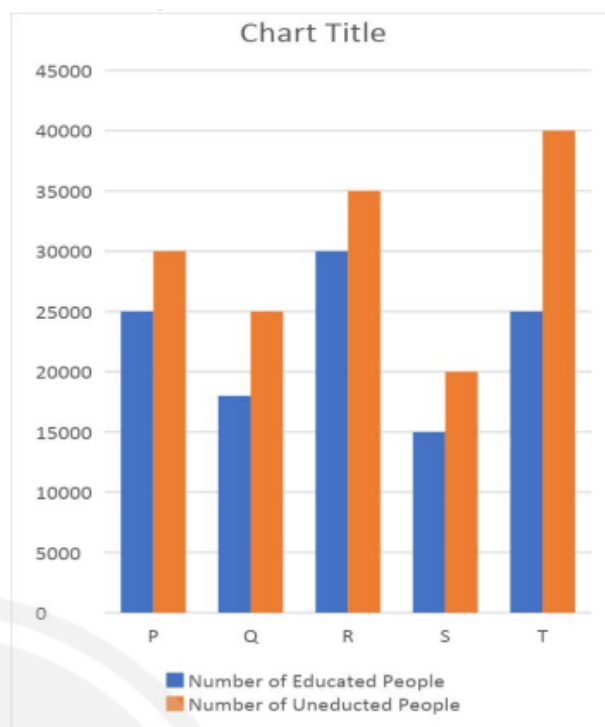
(E) Rs. 2600

Q45 Suman invests Rs. $(x + 1000)$ in a compound interest scheme at the rate of 10% per annum for 2 years and he also invests Rs. x in a simple interest scheme at the rate of 15% per annum for 3 years. The interest received on a simple interest scheme is Rs. 750 more than that of a compound interest scheme. Find the value of x .

- (A) Rs. 3600 (B) Rs. 4000
(C) Rs. 4200 (D) Rs. 4400
(E) Rs. 4800

Directions (46-50) Read the following passage and answer the given questions.

Study the following information carefully and answer the questions given below. The given bar graph shows the number of Uneducated people and the number of Educated people in five different villages.



Q46 Ratio of the number of male and female Uneducated and Educated people in village S is 5 : 3 and 11 : 9 respectively. Find the total number of male Uneducated and Educated people in village S .

- (A) 20750 (B) 20850
(C) 20650 (D) 20950
(E) None of these

Q47 The total number of educated & uneducated people together in village S is what % more/less than the total number of educated & uneducated people in village T ?

- (A) 46.15% less
(B) 38.46% more
(C) 38.50% more
(D) 38.50% less
(E) None of these

Q48 Total number of people in p is 20% more than the number of Uneducated and



Educated people in **P**. If the ratio of the number of male to female population in **P** is **5 : 3**, then find the number of male population in **P**.

- (A) 41240 (B) 41230
(C) 41250 (D) 41280
(E) 41290

Q49 The total number of Educated people in **S** and **T** together is approximately what percent of the number of Uneducated people in the same villages?

- (A) 67% (B) 73%
(C) 75% (D) 78%
(E) 81%

Q50 Ratio of the Educated people in **T** and **U** is **5 : 7** and the number of Uneducated people in **U** is 4000 more than the number of Uneducated people in **Q**. If the ratio of the number of male to female Educated and Uneducated people in **U** is **3 : 2** and **3 : 1** respectively, then find the number of female Educated and Uneducated people in **U**?

- (A) 21200 (B) 21240
(C) 21210 (D) 21250
(E) 20500

Q51 Following question contains two equations as I and II. You have to solve both equations and determine the relationship between them and give an answer.

(i) $x^2 - 14x + 48 = 0$

(ii) $y^2 - 3y - 108 = 0$

- (A) $x > y$
(B) $x \geq y$
(C) $x = y$ or relationship can't be determined.
(D) $x < y$
(E) $x \leq y$

Q52 Following question contains two equations as I and II. You have to solve both equations and determine the relationship between them and give an answer.

(i) $x^2 - 29x + 204 = 0$

(ii) $y^2 + 27y + 180 = 0$

- (A) $x > y$
(B) $x \geq y$
(C) $x = y$ or relationship can't be determined.
(D) $x < y$
(E) $x \leq y$

Q53 Following question contains two equations as I and II. You have to solve both equations and determine the relationship between them and give an answer.

(i) $x^2 - 20x + 99 = 0$

(ii) $y^2 + y - 90 = 0$

- (A) $x > y$
(B) $x \geq y$
(C) $x = y$ or relationship can't be determined.
(D) $x < y$
(E) $x \leq y$

Q54 Following question contains two equations as I and II. You have to solve both equations and determine the relationship between them and give an answer.

(i) $x^2 + x - 156 = 0$

(ii) $y^2 + 33y - 234 = 0$

- (A) $x > y$
(B) $x \geq y$
(C) $x = y$ or relationship can't be determined.
(D) $x < y$
(E) $x \leq y$

Q55 Following question contains two equations as I and II. You have to solve both equations and determine the relationship between them and give an answer.

(i) $3x^2 - 17x - 20 = 0$



(ii) $y^2 - 17y + 52 = 0$

- (A) $x > y$
 (B) $x \geq y$
 (C) $x = y$ or relationship can't be determined.
 (D) $x < y$
 (E) $x \leq y$

Q56 Following question contains two equations as I and II. You have to solve both equations and determine the relationship between them and give an answer.

(i) $x^2 = 225$

(ii) $y = \sqrt{225}$

- (A) $x > y$
 (B) $x \geq y$
 (C) $x = y$ or relationship can't be determined.
 (D) $x < y$
 (E) $x \leq y$

Q57 The dimension of a rectangle is $(x + 5)$ cm and $(x - 2)$ cm respectively. If the perimeter of the rectangle is 6 cm more than the perimeter of the square whose area is 400 cm^2 , then find the area of the rectangle?

- (A) 540 cm^2
 (B) 510 cm^2
 (C) 420 cm^2
 (D) 480 cm^2
 (E) 450 cm^2

Q58 A train crosses a pole in 20.25 seconds and also crosses a 150 m long platform in 27 seconds. Find the speed of the train?

- (A) 60kmph
 (B) 72kmph
 (C) 80kmph
 (D) 90kmph
 (E) None of these

Q59

The boat covers x km upstream in t hours and the same boat covers $(x + 40)$ km downstream in $(t - 4)$ hours. If the speed of the stream is 7kmph, then find the speed downstream?

- (A) 32kmph
 (B) 25kmph
 (C) 28kmph
 (D) 35kmph
 (E) Cannot be determined

Q60 A vessel contains 56 liters of milk and the rest is water which is $\frac{1}{5}$ th of the mixture of the vessel. If 15 liters of mixture are taken out and x liters of water added to the mixture, then the ratio of milk and water becomes 11:6. Then find the value of x .

- (A) 14
 (B) 10
 (C) 13
 (D) 11
 (E) None of these

Directions (61-65) Read the following passage and answer the given questions.

Read the following information carefully and answer the questions. The given information shows the total number of Mobile (Android and Simple) sold by four different shops A, B, C and D.

Android Mobile: Ratio of the number of Android Mobiles sold by shops A and B is 1:2 respectively and the difference between the number of Android Mobiles sold by shops A and D is 90. Number of Android Mobiles sold by shop C is 20% less than that of shop D. Number of Android Mobiles sold by shop C is 60% of number of Android Mobiles sold by shop B.

Simple Mobile: Average number of Simple Mobiles sold by all four shops is 175 and the



number of Simple Mobiles sold by shop A is two times the number of Simple Mobiles sold by shop C. Ratio of the number of Simple Mobiles sold by shops A and D is 5:4 respectively. Number of Simple Mobiles sold by shop B is 80 more than that of shop D.

Q61 Find the difference between the total number of Mobiles sold by shops B and D together?

- (A) 120 (B) 170
(C) 160 (D) 180
(E) None of these

Q62 Out of the number of simple Mobiles sold by shop B, 25% of Simple Mobiles sold at a profit of 40% and the remaining Simple Mobiles sold at a profit of 20%. If all the Simple Mobiles sold for Rs.1.5 lakh in shop B, then find the cost price of each table Mobile in shop B?

- (A) Rs.800 (B) Rs.450
(C) Rs.600 (D) Rs.500
(E) None of these

Q63 Find the average number of Android Mobiles sold by shops A, C and D together?

- (A) 130 (B) 170
(C) 222 (D) 110
(E) None of these

Q64 If the total number of Mobiles sold by shop E is 20% more than that of shop D and the ratio of number of Simple Mobiles sold by shops E and D is 9 : 8 respectively, then find the number of Android Mobiles sold by shop E?

- (A) 336 (B) 420
(C) 280 (D) 150
(E) None of these

Q65 Number of simple Mobiles sold by shops C and D together is approximately what percentage more/less than the number of Android Mobiles sold by shop B?

- (A) 45% less (B) 28% more
(C) 25% less (D) 10% more
(E) None of these

Directions (66-70) Read the following passage and answer the given questions.

Study the following information and answer the given questions.

There are nine people i.e., A, B, C, D, E, F, G, H and J bought gifts for an occasion but not necessarily in the same order. Three people bought between G and A. B bought just before A. Only one person bought between B and J. J bought before B. Three people bought between J and C. Only one person bought between C and H. D bought just before H. Only one person bought between E and F who bought before E.

Q66 Who among the following bought the gift at first?

- (A) G (B) C
(C) F (D) J
(E) B

Q67 Who among the following bought just after H?

- (A) G (B) E
(C) D (D) B
(E) None

Q68 How many people bought before D but after J?

- (A) 0 (B) 1
(C) 2 (D) 3
(E) More than 3



Q69 The number of people bought before D is one less than the number of people bought before ____.

- (A) G (B) J
(C) B (D) H
(E) F

Q70 Four of the five are similar in some manner thus forming a group. Find the odd one.

- (A) F, E (B) J, B
(C) A, D (D) G, H
(E) E, A

Directions (71-75) Read the following passage and answer the given questions.

Direction: Study the following information and answer the given questions.

Ten people are sitting in two parallel rows. A, B, C, D, and E are sitting in row -1 and facing south and P, Q, R, S, and T are sitting in row -2 and facing north such that the people sitting in row -1 are sitting opposite to the people sitting in row -2. All of them are like ten different mobile brands. All the information is not necessarily in the same order.

B sits second to the right of the one who sits opposite to S. One person sits between S and the one who likes Xiaomi. D sits second to the right of the one who sits opposite to the one who likes Xiaomi. The one who likes Lava sits second to the left of D. P sits second to the left of the one who sits opposite to E. P does not like Xiaomi. Two people sit between C and the one who sits opposite to P. The one who likes Nokia sits to the immediate left of the one who sits opposite to A. R likes Samsung. The one who likes Vivo is an immediate neighbour of the one who sits opposite to R. The one who likes iPhone sits opposite to the one who sits second

to the left of Q. The one who likes Oppo sits second to the left of the one who likes Realme. Two people sit between the one who likes Blackberry and the one who likes Motorola. S does not like Motorola.

Q71 Which of the following statements is correct about T?

- (A) He likes Nokia
(B) R sits third to his right
(C) The person sitting immediate left of the one who sits opposite to T likes Oppo
(D) Both (a) and (b)
(E) All are correct

Q72 The one sits diagonally opposite to D like which of the following mobile brands?

- (A) Blackberry (B) Lava
(C) Realme (D) Oppo
(E) Vivo

Q73 If A and R interchange their place, similarly Q and P interchange their position then who is sitting immediately to the left of A?

- (A) Q (B) T
(C) S (D) R
(E) P

Q74 Four of the five are similar in a certain manner and thus form a group. Find the odd one.

- (A) D - Motorola
(B) A - Xiaomi
(C) B - Samsung
(D) E - Blackberry
(E) C - Lava



Q75 The number of people sitting between those who like the iPhone and Realme is similar to the number of people sitting between _ and _.

(A) S, Q (B) T, R

(C) C, E (D) P, S

(E) None

Directions (76-80) Read the following passage and answer the given questions.

Study the following information and answer the given questions.

Five people i.e., A, B, C, D and E are working in a company on five different designations i.e., CEO, CMD, MD, Manager, and Clerk but not necessarily in the same order. The CEO is considered as the senior-most and the Clerk is considered as the junior-most in the company. All of them have different numbers of Pens.

The one who is just junior to D has 21 pens. A is senior to D but junior to E. D is not MD. B has 34 pens. The difference between the number of pens C and A has 20 pens. A has more pens than B. E has half the pens of B but three more pens than D. The number of pens CMD has, is not a prime number.

Q76 What is the sum of the number of pens the CMD and CEO has?

(A) 24 (B) 51

(C) 57 (D) 66

(E) None

Q77 Who is the CEO?

(A) E (B) B

(C) C (D) A

(E) D

Q78 Which of the following is the designation of C?

(A) CEO

(B) CMD

(C) MD

(D) Manager

(E) Clerk

Q79 Who among the following has the highest number of pens?

(A) A

(B) MD

(C) Both (a) and (b)

(D) CEO

(E) D

Q80 Which of the following combination of Designation - Person - Number of pens is correct?

(A) Manager - D - 14

(B) Manager - D - 20

(C) Clerk - B - 34

(D) CEO - A - 40

(E) CMD - E - 20

Directions (81-85) Read the following passage and answer the given questions.

Direction: Study the following information and answer the given questions.

Seven people A, B, C, D, E, F, and G had different birth years, i.e., 1968, 1972, 1988, 1993, 1999, 2001 and 2006 but not necessarily in the same order. All the age calculations are done taking the base year 2022. The difference between the ages of B and G is 5. B is older than G. The number of people born after B is the same as the number of people born before A. Only one person was born between A and E. C is older than F but not the eldest. The



difference between the ages of C and D is not more than 5.

Q81 Who among the following is the eldest?

- (A) D (B) B
(C) G (D) A

(E) F

Q82 What is the age difference between G and F?

- (A) 12 years (B) 5 years
(C) 6 years (D) 8 years
(E) 10 years

Q83 Who among the following was born just after F?

- (A) B (B) A
(C) D (D) E
(E) G

Q84 In which year did A was born?

- (A) 1972 (B) 1968
(C) 1999 (D) 2001
(E) 2006

Q85 Who among the following is 29 years old?

- (A) E (B) G
(C) B (D) F
(E) D

Directions (86-90) Read the following passage and answer the given questions.

Study the following information and answer the given questions.

In a certain code language,

'Data saved number Manage' is coded as 'ad fg rt yu',

'Gap full rent saved' is coded as 'aq es ad cx',

'Number sum ball rent' is coded as 'gt yu ui aq' and

'Ball full canvas manage' is coded as 'rt gt cd es'.

Q86 Which of the following will be the code for "Data sum ball"?

- (A) fg ui yu
(B) ad aq yu
(C) fg ui gt

(D) rt cx ad

(E) None of the above

Q87 Which of the following is coded as 'cx'?

- (A) Canvas (B) Gap
(C) Full (D) Number

(E) Sum

Q88 If 'whole number' is coded as 'wl yu' then what will be the code for 'whole canvas'?

- (A) 'wl cd'
(B) 'wl ui'
(C) 'cd ui'

(D) 'ui yu'

(E) None of the above

Q89 Which of the following is coded as 'rt es aq'?

(A) Manage saved data

(B) Saved data Number

(C) Saved full rent

(D) Manage full rent

(E) None of the above



Q90 Which of the following is coded as 'ui yu'?

- (A) Sum number
- (B) Ball gap
- (C) Sum data
- (D) Ball canvas
- (E) None of the above

Directions (91-95) Read the following passage and answer the given questions.

In the following questions assuming the given statement to be true, find which of the conclusion(s) among given conclusions is/are definitely true, and then give your answers accordingly.

Q91 Statements:

$D = F \geq R \geq T$; $Q > A > S$; $T = G < H$; $S = W \leq E \leq D$

Conclusions:

- I. $S \leq F$
- II. $D > H$
- (A) Only I follows
- (B) Only II follows
- (C) Both I and II follow
- (D) Either I or II follows
- (E) Neither I nor II follows

Q92 Statements:

$F > C = T$; $H \leq B \leq G$; $T \geq Y = U > O$; $G = V > F$

Conclusions:

- I. $G > O$
- II. $F < H$
- (A) Only I follows
- (B) Only II follows
- (C) Both I and II follow
- (D) Either I or II follows

(E) Neither I nor II follows

Q93 Statements:

$L = K \leq M \leq N$; $Q > S = C$; $U = O > P < L$; $C \geq G \leq U$

Conclusions:

- I. $L \geq G$
- II. $P < N$
- (A) Only I follows
- (B) Only II follows
- (C) Both I and II follow
- (D) Either I or II follows
- (E) Neither I nor II follows

Q94 Statements:

$V > C = D \geq R$; $U = H > N < B$; $Y \leq T = F > V$; $B \geq G \leq Y$

Conclusions:

- I. $B \geq V$
- II. $T > R$
- (A) Only I follows
- (B) Only II follows
- (C) Both I and II follow
- (D) Either I or II follows
- (E) Neither I nor II follows

Q95 Statements:

$G = H > V$; $R > T = Y$; $V < B < N = M$; $Y \geq F \leq G$

Conclusions:

- I. $M > G$
- II. $R \geq G$
- (A) Only I follows
- (B) Only II follows
- (C)



Both I and II follow

- (D) Either I or II follows
(E) Neither I nor II follows

Directions (96-98) Read the following passage and answer the given questions.

Study the following information and answer the given questions.

A three-generation family consists of nine members i.e., B, C, D, E, G, I, J, L and M. C is the mother-in-law of E who is the wife of D. J is the granddaughter of M who is the mother of G. I is the daughter of D. D is the son of B and has no siblings. G is the unmarried nephew of L. G is the brother of E. J is the sister of I.

Q96 If L is the uncle of E then how many female members are there in the family?

- (A) 4 (B) 5
(C) 3 (D) 6
(E) 2

Q97 If K is married to J then how is K related to D?

- (A) Mother (B) Daughter
(C) Son-in-law (D) Sister
(E) Son

Q98 How is L related to I?

- (A) Grandmother
(B) Grandfather
(C) Mother
(D) Aunt
(E) Cannot be determine

Q99 How many such pairs of letters are there in the word **REVOLUTION** each of which has as many letters between them in the word (in both forward and backward directions) as they have between them in the English alphabetical series?

- (A) 0 (B) 1
(C) 2 (D) 3
(E) More than 3

Q100 If a meaningful word can be formed using 2nd, 3rd, 6th and 9th letters of **DICTIONARY**. What will be the second letter from the left of the newly formed word? If no such words can be formed mark X as your answer. If more than one such word can be formed mark Z as your answer.

- (A) I (B) O
(C) Y (D) X
(E) Z



Answer Key

Q1 (D)
Q2 (C)
Q3 (E)
Q4 (A)
Q5 (B)
Q6 (B)
Q7 (A)
Q8 (C)
Q9 (D)
Q10 (B)
Q11 (A)
Q12 (B)
Q13 (C)
Q14 (B)
Q15 (C)
Q16 (B)
Q17 (A)
Q18 (D)
Q19 (B)
Q20 (A)
Q21 (D)
Q22 (E)
Q23 (E)
Q24 (A)
Q25 (D)
Q26 (C)
Q27 (D)

Q28 (E)
Q29 (E)
Q30 (D)
Q31 (D)
Q32 (A)
Q33 (B)
Q34 (E)
Q35 (B)
Q36 (A)
Q37 (B)
Q38 (A)
Q39 (B)
Q40 (A)
Q41 (C)
Q42 (A)
Q43 (B)
Q44 (E)
Q45 (B)
Q46 (A)
Q47 (A)
Q48 (C)
Q49 (A)
Q50 (E)
Q51 (C)
Q52 (A)
Q53 (B)
Q54 (C)



Q55 (C)
Q56 (E)
Q57 (E)
Q58 (C)
Q59 (E)
Q60 (C)
Q61 (B)
Q62 (D)
Q63 (C)
Q64 (A)
Q65 (B)
Q66 (C)
Q67 (A)
Q68 (E)
Q69 (C)
Q70 (D)
Q71 (D)
Q72 (A)
Q73 (E)
Q74 (E)
Q75 (C)
Q76 (B)
Q77 (A)

Q78 (E)
Q79 (C)
Q80 (A)
Q81 (A)
Q82 (D)
Q83 (E)
Q84 (C)
Q85 (B)
Q86 (C)
Q87 (B)
Q88 (A)
Q89 (D)
Q90 (A)
Q91 (A)
Q92 (A)
Q93 (B)
Q94 (B)
Q95 (E)
Q96 (B)
Q97 (C)
Q98 (E)
Q99 (E)
Q100 (B)



Hints & Solutions

Q1. Text Solution:

The introductory line is in statement (D) which states to meet the needs of diverse types of institutions, the Higher Education Financing Agency established five financing windows. Then statement (C) is the sequential statement as it states that considering establishment of these financial institutions, a projection of Rs 1,00,000 crore of investment. Then statement (E), (F) and (B) gets followed, which states that although there was an increase in sanctioning of the loan but due to the COVID outbreak, construction activities and education institutions were closed and were unable to undertake the new projects. Sixth (A) states the reason for creation of five financial windows under Higher Education Financing Agency (HEFA) that under the fact HEFA fell short of projections that the institutes are wary of taking loans due to weak state of finances. Therefore, the correct order of the jumbled up paragraph is DCEFBA. Hence the correct option choice is (4).

Q2. Text Solution:

The introductory line is in statement (D) which states to meet the needs of diverse types of institutions, the Higher Education Financing Agency established five financing windows. Then statement (C) is the sequential statement as it states that considering establishment of these financial institutions, a projection of Rs(1,00,000) crore of investment. Then statement (E), (F) and (B) gets followed, which states that although there was an increase in sanctioning of the loan but due to the COVID outbreak, construction activities and education institutions were closed and were unable to

undertake the new projects. Sixth (A) states the reason for creation of five financial windows under Higher Education Financing Agency (HEFA) that under the fact HEFA fell short of projections that the institutes are wary of taking loans due to weak state of finances. Therefore, the correct order of the jumbled up paragraph is DCEFBA. Hence the correct option choice is (3).

Q3. Text Solution:

The introductory line is in statement (D) which states to meet the needs of diverse types of institutions, the Higher Education Financing Agency established five financing windows. Then statement (C) is the sequential statement as it states that considering establishment of these financial institutions, a projection of Rs(1,00,000) crore of investment. Then statement (E), (F) and (B) gets followed, which states that although there was an increase in sanctioning of the loan but due to the COVID outbreak, construction activities and education institutions were closed and were unable to undertake the new projects. Sixth (A) states the reason for creation of five financial windows under Higher Education Financing Agency (HEFA) that under the fact HEFA fell short of projections that the institutes are wary of taking loans due to weak state of finances. Therefore, the correct order of the jumbled up paragraph is DCEFBA. Hence the correct option choice is (5).

Q4. Text Solution:

The introductory line is in statement (D) which states to meet the needs of diverse types of institutions, the Higher Education Financing



Agency established five financing windows. Then statement (C) is the sequential statement as it states that considering establishment of these financial institutions, a projection of Rs(1,00,000) crore of investment. Then statement (E), (F) and (B) gets followed, which states that although there was an increase in sanctioning of the loan but due to the COVID outbreak, construction activities and education institutions were closed and were unable to undertake the new projects. Sixth (A) states the reason for creation of five financial windows under Higher Education Financing Agency (HEFA) that under the fact HEFA fell short of projections that the institutes are wary of taking loans due to weak state of finances. Therefore, the correct order of the jumbled up paragraph is DCEFBA. Hence the correct option choice is (1).

Q5. Text Solution:

The introductory line is in statement (D) which states to meet the needs of diverse types of institutions, the Higher Education Financing Agency established five financing windows. Then statement (C) is the sequential statement as it states that considering establishment of these financial institutions, a projection of Rs (1,00,000) crore of investment. Then statement (E), (F) and (B) gets followed, which states that although there was an increase in sanctioning of the loan but due to the COVID outbreak, construction activities and education institutions were closed and were unable to undertake the new projects. Sixth (A) states the reason for creation of five financial windows under Higher Education Financing Agency (HEFA) that under the fact HEFA fell short of projections that the institutes are wary of taking loans due to weak state of finances.

Therefore, the correct order of the jumbled up paragraph is DCEFBA. Hence the correct option choice is (2).

Q6. Text Solution:

The introductory line is in statement (D) which states to meet the needs of diverse types of institutions, the Higher Education Financing Agency established five financing windows. Then statement (C) is the sequential statement as it states that considering establishment of these financial institutions, a projection of Rs (1,00,000) crore of investment. Then statement (E), (F) and (B) gets followed, which states that although there was an increase in sanctioning of the loan but due to the COVID outbreak, construction activities and education institutions were closed and were unable to undertake the new projects. Sixth (A) states the reason for creation of five financial windows under Higher Education Financing Agency (HEFA) that under the fact HEFA fell short of projections that the institutes are wary of taking loans due to weak state of finances. Therefore, the correct order of the jumbled up paragraph is DCEFBA. Hence the correct option choice is (2).

Q7 Text Solution:

The correct order is ACB. Hence, the correct answer is option (1). Correct statement after corrections: Built on a compelling narrative – the combination of accelerated financial inclusion (bank accounts), ease of identification (Aadhaar) and connectivity (mobile phones) – it is ultimately a bet on the Indian consumer, and the economy, not on government regulations/policies.

Q8 Text Solution:



The correct order is BCA. Hence, the correct answer is option (3).

Correct statement after corrections: Whichever way one slices the data, the reality is, there aren't that many consumers with significant discretionary spending capacity, and those with the capacity aren't increasing their spending as these companies would hope.

Q9 Text Solution:

The correct order is CBA. Hence, the correct answer is option (4). Correct statement after corrections: While more consumers are on-board digital payment platforms – Paytm has about 70 million monthly transacting users – these numbers suggest that when it comes to consumers with considerable discretionary spending, the size of the market shrivels considerably.

Q10 Text Solution:

The correct order is CAB. Hence, the correct answer is option (2).

Correct statement after corrections: While these companies have seen an increase in the number of transacting customers, to what extent the overall customer base for these startups can expand further is constrained by the number of households in the cohort that has significant spending power.

Q11 Text Solution:

The correct pair of words that can fit in the sentence to make it grammatically and contextually correct is in option (1). The given sentence conveys that after the pandemic-induced constraints on economic output a normal monsoon would help boost agricultural production and will surge the rural demand.

Q12 Text Solution:

The correct pair of words that can fit in the sentence to make it grammatically and contextually correct is in option (2). It is very clear that the second blank should be filled by the word 'forecast', hence option (3), (4) and (5) can be ruled out. The phrase '....change in wind and sea surface temperature...' indicates that the correct word to be filled in first blank should be 'irregular'. Hence option (2) is the correct answer choice.

Q13 Text Solution:

The correct pair of words that can fit in the sentence to make it grammatically and contextually correct is in option (3). The word 'floodplains' used in the sentence means 'an area of low-lying ground adjacent to a river, formed mainly of river sediments and subject to flooding.' So to prevent the over flow of the dams and rivers a drainage system is created so it is an infrastructure. Hence the pair of words given in option (3) makes the given sentence grammatically and contextually correct. Hence option (3) is the correct answer choice.

Q14 Text Solution:

The correct answer is option (2).

The word "instrumental" is an adjective, which means "serving as a means of pursuing an aim". Some synonyms of "instrumental" are involved, active, influential, contributory etc. The word 'acrimony' means 'angry and bitter feelings or words'. 'Communities' refer to 'sections of the society'. None of these make sense if used here in the first blank. The word 'hegemony' means 'control by one country, organization, etc. over other countries, etc. within a particular group'. 'Commodities' refer to 'products or materials that can be bought and sold'.

Q15 Text Solution:



The correct answer is option (3).

In the first blank, an adverb is needed. If we go through the options only, option B,C and E have adverbs. The word 'apparently' according to what people say or to how something appears, but perhaps not true'. The word 'pertinent' means 'closely connected with the subject being discussed'. The word 'eerily' is an adverb, and it means 'in a strange and frightening manner'. The word 'inherently' means 'belonging by nature or habit'. However, persistently and inherently make no sense if used in the first blank.

Q16 Text Solution:

Solution (2)

Let's look at the sentences one by one:

Sentence (A) - This sentence has no errors.

Sentence (B) - with a plural subject 'experts' plural verb 'believe' should be followed.

Sentence (C) - The sentence talks about investors investing and so in place of 'for' 'before investing' would be preferred to make the statement meaningful and grammatically sound.

Hence, the correct answer is option (2).

Q17 Text Solution:

Sentence D is wrong as the verb 'made' should be followed by an adverb. 'careful' is an adjective. So, it should be replaced with the adverb 'carefully'.

Therefore, option (1) is the correct answer.

Q18 Text Solution:

Part B is wrong. As we have mentioned the time of the event (tuesday), the sentence must be written in past indefinite tense. Part D is wrong as the use of 'a few' is correct according to the context. Therefore, the correct sentences are:

Scientists announced the news on Tuesday during a meeting of the American Geophysical Union.

Scientists said it took a few months to get the data back and then several more months to confirm.

Q19 Text Solution:

The error lies in sentence 2. The verb 'attributed' means 'regard something as being caused by.' It takes the preposition 'to' after it. Thus, the correct sentence is: One major reason for the Soviet Union suffering an economic bust in 1991 was attributed to the Kremlin.

Q20 Text Solution:

The error lies in sentence 1. In this sentence, the subject is singular 'political problem'. It should be followed by a singular verb i.e. 'is'. Thus, the correct sentence is: Another political problem that has contributed to the melting of Arctic ice sheets is the improved navigability of the northern oceans.

Q21 Text Solution:

Let us look at the options:-

Option a- 'All the same' is used to describe having said that or still and all.

Option b- 'Nonetheless' is used to state in spite of something.

Option c- 'By Comparison' is used to state when things are compared.

Option d- 'In any case' is used to describe whatever happens or may have happened.

Option e- 'but' is used to introduce a statement that contrasts with or seems to contradict something that has been said previously.

Among the given options, 'In any case' is the one that most suitably connects the two sentences while preserving the intended meaning of the sentence.



The correct sentence will be:- Of course, corn breeding and farming innovations may be reducing downside risk, thereby countering adverse climate effects. In any case, increasing weather related production risks are not evident in existing aggregate yield data.

Hence option (4) is the correct answer.

Q22 Text Solution:

Let us look at the options:-

Option a- 'Above all' is used to describe more so than everything else.

Option b- 'Nonetheless' is used to state in spite of something.

Option c- 'Accordingly' is used in a way that is appropriate to the particular circumstances: When we receive instructions we will act accordingly.

Option d- 'Yet' is used to describe up until the present or a specified or implied time; by now or then.

Option e- 'In Contrast' is used when if one thing is in contrast to another, it is very different from it.

Among the given options, 'In contrast' is the one that most suitably connects the two sentences while preserving the intended meaning of the sentence.

The correct sentence will be:-

He pointed out that any employee who has tried to claim medical reimbursement would be well aware of the cumbersome procedures and the red tapes

involved in getting a reimbursement. In contrast, Medisep is a cashless insurance scheme, which is fully digitally managed. In the first few weeks itself, 902 claims worth ₹1.89 crores had been settled under Medisep.

Hence option (5) is the correct answer.

Q23 Text Solution:

Let us look at the options:-

Option a- 'Above all' is used to describe more so than everything else.

Option b- 'For Instance' means 'For Example'.

Option c- 'Accordingly' is used in a way that is appropriate to the particular circumstances: When we receive instructions we will act accordingly.

Option d- 'Yet' is used to describe up until the present or a specified or implied time; by now or then.

Option e- 'Alongside' means together or in cooperation with.

Among the given options, 'Alongside' is the one that most suitably connects the two sentences while preserving the intended meaning of the sentence.

The correct sentence will be:- Vital but Limited, the ETC describes the complementary role of carbon capture, utilisation and storage (CCUS) has alongside zero-carbon electricity, clean hydrogen and sustainable low- carbon bio resources in delivering a net-zero economy by mid-century. Massive clean electrification is the backbone of global decarbonisation. However, electrification, hydrogen and sustainable low-carbon bioenergy combined cannot reduce gross emissions completely to zero.

Hence option (5) is the correct answer.

Q24. Text Solution:

Solution (1)

According to the passage, "The decision comes at a critical juncture with a study in The Lancet published this month showing that India accounts for the highest number of cervical cancer cases in Asia, followed by China." Therefore, we can infer with this line that statement (1) is correct as it states the reason for announcing the launch of vaccination by



the Central Government. Statement (2) and (3) are not correct as it only states about Cervical Cancer. Hence, the correct answer is option (1).

Q25. Text Solution:

Solution (4)

The WHO has mandated that nations attain and maintain an incidence rate of less than 4 new instances of cervical cancer per 100,000 women per year, according to the International Agency for Research on Cancer. To achieve that goal, it is necessary that 90% of girls will have to be fully vaccinated with the HPV vaccine by the age of 15. Therefore, we can infer that both the statements (1) and (2) states the aim of the government that must be established or achieved to prevent cervical cancer. Statement (3) states one of the initiatives of the government to prevent and tackle cervical cancer disease. Hence, the correct answer is option (4).

Q26. Text Solution:

Solution (3)

The author has given a detailed analysis about the subject and supported all his points with valid arguments. Such a descriptive, explanatory and supported by data content must be called as written in an analytical style based on the certain core topics and the importance of science. If we talk about option (2), it is not a convenient option as the author is not trying to prove his point by being superior so 'Patronizing' is not a good fit. 'Introspective' tone is when the author is involved in a deep thought so that doesn't happen here. The author isn't 'Speculative' as well as he is making his points based on facts and not plain assumptions. Hence the correct answer choice is option (3).

Q27. Text Solution:

Solution (4)

According to the passage, "The government's intent to introduce the HPV vaccine in the Universal Immunisation Programme (UIP) is a welcome move." It can be inferred that the government is planning to introduce the HPV vaccine in the Universal Immunisation Programme (UIP) as it's one of the initiatives to diagnose cervical cancer. Therefore, statement (4) is correct as it underscores the initiatives taken by the government to diagnose cervical cancer. All other statements do not underscore the initiatives that the government will take to diagnose cervical cancer. Hence the correct answer choice is option (4).

Q28. Text Solution:

Solution (5)

According to the passage, "The UIP is one of the largest public health programmes targeting over 2 crore new-borns and 2 crore pregnant women annually, and offers free vaccines for at least 12 diseases." Therefore, with this statement it can be inferred that all the statements are correct and best describes the Universal Immunisation Programme (UIP) programme. Hence the correct answer choice is option (5).

Q29. Text Solution:

Solution (5)

According to the passage, "India has taken up the fight against cervical cancer in earnest with the Central government announcing that it will roll out vaccination for girls aged between 9 and 14 years through schools." The phrase "roll out" means 'to launch'. All other phrases are irrelevant to fill the blank of the given line in the passage. As the statement states about the launching of the vaccination for girls by the government as a step towards fighting cervical



cancer. Hence the correct answer choice is option (5).

Spell out- to explain something in a very clear way with details

Ushered in- to be the beginning of something new or to make something new begin.

Let down- a disappointment

Q30. Text Solution:

According to the passage, "To that end, the government's intent to introduce the HPV vaccine in the Universal Immunisation Programme (UIP) is a welcome move." With this statement we can infer that the government is planning and implementing the introduction of the HPV vaccine in the Universal Immunisation Programme (UIP) is a welcome move by the government. 'Intent' means 'Showing great attention'. 'Aim' is an appropriate word that can replace the word 'intent' as given bold in the passage. All other words can be used to state the introduction of vaccines. Hence the correct answer choice is option (4). Urge-To request
Endorse- To declare one's public approval
Affirm-To declare or state empathically.

Q31. Text Solution:

Solution (4)

Number of Television sold by S = $1600 - (480 + 40\% \text{ of } 1600) = 480$

Number of television sold by T = $\frac{480}{2} = 240$

the ratio of the number of Television and GYSER sold by T is 8: 11

then, number of Gysen sold by
 $T = 240 \times \frac{11}{8} = \mathbf{330}$

Q32. Text Solution:

Solution (1)

Number of mobile sold by P = 30% of 1000 = 300

Number of mobile sold by Q = 20% of 2080 = 416

Difference = $416 - 300 = 116$

Number of Television sold by Q = $2080 - (520 + 20\% \text{ of } 2080) = 1144$

Number of Television sold by R = $1400 - (560 + 35\% \text{ of } 1400) = 350$

Required % = $\frac{(116)}{1144+350} \times 100$
 $= \frac{116}{1494} \times 100 = \mathbf{7.76\%}$

Q33. Text Solution:

Solution (2)

Number of mobile sold by P = 30% of 1000 = 300

Number of unsold mobile by
 $P = \frac{7}{3} \times 300 = 700$

Number of mobile sold by Q = 20% of 2080 = 416

Number of unsold mobile by Q = 50% of 700 = 350

Number of Gysen unsold by Q = $350 + 36 = 386$

Number of Gysen sold by Q = 520

Total number of sold & unsold Gysen by Q = $520 + 386 = 906$

Q34. Text Solution:

Number of Television sold by P = $1000 - (400 + 30\% \text{ of } 1000) = 300$

Number of mobile sold by R = 35% of 1400 = 490

Total revenue = $(40\% \text{ of } 300) \times (110\% \text{ of } 2000) + (60\% \text{ of } 300) \times (60\% \text{ of } 2000) + (60\% \text{ of } 490) \times (105\% \text{ of } 3000) + (40\% \text{ of } 490) \times (80\% \text{ of } 3000)$
 $= 480000 + 1396500$
 $= \text{Rs. } 1876500$

Q35. Text Solution:

Number of television sold by P = $1000 - (400 + 30\% \text{ of } 1000) = 300$

Number of television sold by R = $1400 - (560 + 35\% \text{ of } 1400) = 350$

Number of Television sold by
 $T = \frac{350+300}{2} = \mathbf{325}$

Number of mobile sold by S = 40% of 1600 = 640

Number of mobile sold by T = 120% of 640 = 768



Number of Gyer sold by T = 180% of 1600 – (768 + 325) = 1787

Q36 Text Solution:

16	24	31	37	42	46
+8	+7	+6	+5	+4	

Q37 Text Solution:

Pattern	Given
11	11
$11 \times 2 + 11 = 33$	33
$33 \times 2 + 8 = 74$	74
$74 \times 2 + 5 = 153$	153
$153 \times 2 + 2 = 308$	308
$308 \times 2 + 1 = 617$	617

Q38 Text Solution:

Pattern	Given
2	2
$2 + 5 = 7$	7
$7 + 10 = 17$	17
$17 + 15 = 32$	32
$32 + 20 = 52$	52
$52 + 25 = 77$	77

Q39 Text Solution:

10	10
$10 \times 2 = 20$	20
$20 \times 3 = 60$	60
$60 \times 5 = 300$	300
$300 \times 7 = 2100$	2100
$2100 \times 11 = 23100$	23100

Q40 Text Solution:

Pattern	Given
7	7
$7 \times 1 + 1 = 8$	8
$8 \times 2 + 2 = 18$	18
$18 \times 3 + 3 = 57$	57
$57 \times 4 + 4 = 232$	232
$232 \times 5 + 5 = 1165$	1165

Q41 Text Solution:

Ram and Chandan = 300:100 = 3:1

Efficiency of Ram, Shyam and Chandan = 3:2:1

Time ratio of Ram, Shyam and Chandan = 2:3:6

ATQ,

$$\frac{1}{3x} + \frac{1}{6x} = \frac{1}{60}$$

$$x = 30$$

$$\text{Ram \& Chandan} = \frac{1}{2 \times 30} + \frac{1}{3 \times 30} = \frac{1}{36}$$

Ram and Shyam together can complete the work in 36 days

Q42 Text Solution:

Solution (1)

Initial investment of Anirudh = $4x$

Initial investment of Chandan = $5x$

Initial investment of Balmki = 120% of $5x = 6x$

Profit ratio of Anirudh, Balmiki and Chandan = $4x \times 30$

$$: (6x \times 12 + (6x \times \frac{2}{3} \times 18))$$

$$: (5x \times 24 + (5x \times \frac{160}{100} \times 6))$$

$$= 120 : 144 : 168 = 5 : 6 : 7$$

$$\text{Aniruddh's profit share} = \frac{5}{18} \times 7200$$

$$= \text{Rs. 2000}$$

Q43 Text Solution:

Let be the present age of Ankit & Ankit's father age

$X \& Y$

$$Y = 4X$$

$$Y - 4 = 6 \times (X - 4)$$

$$4X - 4 = 6X - 24$$

$$X = 10$$

$$\text{Ankit's Grandfather} = 10 \times 7 = 70$$

$$\text{Ankit'S Father} = 4 \times 10 = 40$$

$$\text{Difference} = 70 - 40 = 30 \text{ years}$$

Q44 Text Solution:

Solution (3)

Let be the CP Mobile phone = $5x$

And MP = $9x$

SP of Mobile Phone = $9x \times 80\% \times 75\% = 5.4x$

New SP of Mobile Phone = $9x \times 65\% = 5.85x$

$$5.85x - 5.4x = 180$$

$$0.45x = 180$$

$$X = 400$$

SP of Mobile phone sold at 30% of profit
= 130% of $(5 \times 400) = \text{Rs. } 2600$

Q45 Text Solution:

$$CI = (x + 1000) \left(1 + \left(\frac{10}{100}\right)\right)^2$$

$$CI = (x + 1000) \left(1 + \frac{10}{100}\right)^2 - (x + 1000)$$

$$= (x + 1000) \times \frac{21}{100}$$

$$SI = x \times 15 \times \frac{3}{100} = \frac{45x}{100}$$

$$\frac{45x}{100} - \frac{21x}{100} - 210 = 750$$

$$\frac{24x}{100} = 960$$

$$x = 4000$$

Q46. Text Solution:

Number of male uneducated in

$$S = \frac{5}{8} \times 20000 = 12500$$

$$\text{Number of male Educated} = \frac{11}{20} \times 15000 = 8250$$

Required number of male educetedd & uneducated = $12500 + 8250 = 20750$

Q47. Text Solution:

Number of educated & uneducated people in village S = $15000 + 20000 = 35000$

Number of educated & uneducated people in village T = $25000 + 40000 = 65000$

$$\text{Required \%} = \frac{65000 - 35000}{65000} \times 100 = 46.15\% \text{ less}$$

Q48. Text Solution:

Total number of educated & uneducated people in village p = $25000 + 30000 = 55000$

Total number of people in that village = 120% of 55000 = 66000

Male population in village

$$P = \frac{5}{8} \times 66000 = 41250$$

Q49. Text Solution:

Total number of educated people in village S & T = $15000 + 25000 = 40000$

Total number of uneducated people in village S & T = $20000 + 40000 = 60000$

$$\text{Required \%} = \frac{40000}{60000} \times 100 = 66.66\%$$

Q50. Text Solution:

Number of educated people in T = 25000

$$\text{Number of educated people in U} = \frac{7}{5} \times 35000$$

Number of uneducated people in Q = 25000

Number of uneducated people in U = $25000 + 4000 = 29000$

$$\text{Number of female educated people in U} = \frac{2}{5} \times 35000 = 14000$$

$$\text{Number of female uneducated people in U} = \frac{1}{4} \times 29000 = 6500$$

Total number of female educated & uneducated = $14000 + 6500 = 20500$

Q51 Text Solution:

$$(i) x^2 - 14x + 48 = 0$$

$$X^2 - 8X - 6X + 48 = 0$$

$$X(X - 8) - 6(X - 8) = 0$$

$$(x - 8)(x - 6) = 0$$

$$X = 6, 8$$

$$(ii) y^2 - 3y - 108 = 0$$

$$y^2 - 12y + 9y - 108 = 0$$

$$Y(y - 12) + 9(y - 12) = 0$$

$$(y - 12)(y + 9) = 0$$

$$Y = 12, -9$$

compair the value of x and y .relationship can't be determined.

Q52 Text Solution:

$$(i) x^2 - 29x + 204 = 0$$

$$x^2 - 17x - 12x + 204 = 0$$



$$x(x - 17) - 12(x - 17) = 0$$

$$(x - 17)(x - 12) = 0$$

$$X = 17, 12$$

$$(ii) y^2 + 27y + 180 = 0$$

$$Y^2 + 15y + 12y + 180 = 0$$

$$Y(y + 15) + 12(y + 15) = 0$$

$$(y + 15)(y + 12) = 0$$

$$Y = -15, -12$$

$$x > y$$

Q53 Text Solution:

$$(i) x^2 - 20x + 99 = 0$$

$$x^2 - 11x - 9x + 99 = 0$$

$$X(x - 11) - 9(x - 11) = 0$$

$$(x - 11)(x - 9) = 0$$

$$X = 11, 9$$

$$(ii) y^2 + 1y - 90 = 0$$

$$Y^2 + 10y - 9y - 90 = 0$$

$$Y(y + 10) - 9(y + 10) = 0$$

$$(y + 10)(y - 9) = 0$$

$$Y = 9, -10$$

$$\text{So, } x \geq y$$

Q54 Text Solution:

$$(i) x^2 + x - 156 = 0$$

$$x^2 + 13x - 12x - 156 = 0$$

$$x(x + 13) - 12(x + 13) = 0$$

$$(x + 13)(x - 12) = 0$$

$$X = 12, -13$$

$$(ii) y^2 + 33y - 234 = 0$$

$$y^2 + 39y - 6y - 234 = 0$$

$$y(y + 39) - 6(y + 39) = 0$$

$$(y + 39)(y - 6) = 0$$

$$Y = -39, 6$$

compar the value of x and y ,relationship can't be determined.

Q55 Text Solution:

$$(i) 3x^2 - 17x - 20 = 0$$

$$3x^2 - 20x + 3x - 20 = 0$$

$$x(3x - 20) + 1(3x - 20) = 0$$

$$(3x - 20)(x + 1) = 0$$

$$X = \frac{20}{3}, -1$$

$$(ii) y^2 - 17y + 52 = 0$$

$$Y^2 - 13y - 4y + 52 = 0$$

$$Y(y - 13) - 4(y - 13) = 0$$

$$Y = 13, 4$$

compar the value of x and y ,Relation can't be established.

Q56 Text Solution:

from (i)

$$x = 15, -15$$

from (ii)

$$y = 15$$

$$\text{So, } x \leq y$$

Q57 Text Solution:

$$\text{Side of a square} = \sqrt{400} = 20$$

$$\text{Perimeter of the square} = 20 \times 4 = 80 \text{ cm}$$

$$\text{Perimeter of a rectangle} = 80 + 6 = 86 \text{ cm}$$

$$2(x + 5 + x - 2) = 86$$

$$2x + 3 = 43$$

$$x = 20$$

Area of the rectangle

$$= (20 + 5) \times (20 - 2) = 450 \text{ cm}^2$$

Q58 Text Solution:

Length of train = x

speed of train = y

$$x = y \times \frac{5}{18} \times 20.25$$

$$x = 5.625y$$

$$x + 150 = y \times \frac{5}{18} \times 27$$

$$2x + 300 = 15y$$

$$2 \times 5.625y + 300 = 15y$$

$$300 = 3.75y$$

$$y = 80 \text{ kmph}$$

Q59 Text Solution:



Let speed of the boat in still water = B kmph

$$\frac{x}{(B-7)} = t$$

$$t \times (B - 7) = x$$

$$\frac{(x+40)}{(B+7)} = t - 4$$

$$(B + 7) \times (t - 4) = x + 40$$

$$\left((B + 7) \times (t - 4) \right) - 40 = t \times (B - 7)$$

Data insufficient

Q60 Text Solution:

Milk in the vessel = 56 liters

Water in the vessel = $56 \times \frac{1}{4} = 14$ liters

$$\frac{(56 - 15 \times \frac{4}{5})}{(14 - 15 \times \frac{1}{5} + x)} = \frac{11}{6}$$

$$\frac{(56 - 12)}{(14 - 3 + x)} = \frac{11}{6}$$

$$\frac{44}{(11 + x)} = \frac{11}{6}$$

$$264 = 121 + 11x$$

$$143 = 11x$$

$$x = 13 \text{ liters}$$

Q61. Text Solution:

Number of Android Mobiles sold by shop $A = x$

Number of Android Mobiles sold by shop

$$B = 2x$$

Number of Android Mobiles sold by shop $(C = 2x \times \frac{60}{100})$

$$= 1.2x$$

Number of Android Mobiles sold by shop $(D = 1.2$

$$\times \frac{100}{80})$$

$$= 1.5x$$

$$1.5x - 1x = 90$$

$$X = 180$$

Number of Android Mobiles sold by shop

$$A = 180$$

Number of Android Mobiles sold by shop

$$B = 2 \times 180 = 360$$

Number of Android Mobiles sold by shop

$$C = 1.2 \times 180 = 216$$

Number of Android Mobiles sold by shop

$$D = 1.5 \times 180 = 270$$

Total number of Simple Mobiles sold by all four

$$\text{shops} = 175 \times 4 = 700$$

Number of Simple Mobiles sold by shop $C = y$

Number of Simple Mobiles sold by shop $A = 2y$

Number of Simple Mobiles sold by shop D

$$= 2y \times \frac{4}{5} = 8y/5$$

Number of Simple Mobiles sold by shop $B = 8y/5 + 80$

$$= y + 2y + 8y/5 + 8y/5 + 80 = 700$$

$$3y + 8y/5 + 8y/5 = 620$$

$$31y = 3100$$

$$y = 100$$

Number of Simple Mobiles sold by shop

$$A = 2 \times 100 = 200$$

Difference between the mobile sold by shop B

$$\& D = 600 - 430 = 170$$

Q62. Text Solution:

Number of Android Mobiles sold by shop $A = x$

Number of Android Mobiles sold by shop

$$B = 2x$$

Number of Android Mobiles sold by shop

$$C = 2x \times 60/100$$

$$= 1.2x$$

Number of Android Mobiles sold by shop

$$D = 1.2x \times 100/80$$

$$= 1.5x$$

$$1.5x - 1x = 90$$

$$X = 180$$



Number of Android Mobiles sold by shop

$$A = 180$$

Number of Android Mobiles sold by shop

$$B = 2 \times 180 = 360$$

Number of Android Mobiles sold by shop

$$C = 1.2 \times 180 = 216$$

Number of Android Mobiles sold by shop

$$D = 1.5 \times 180 = 270$$

Total number of Simple Mobiles sold by all four

$$\text{shops} = 175 \times 4 = 700$$

Number of Simple Mobiles sold by shop C = y

Number of Simple Mobiles sold by shop A = 2y

Number of Simple Mobiles sold by shop D

$$= 2y \times 4/5 = 8y/5$$

Number of Simple phones sold by shop B = 8y/5

+ 80

$$= y + 2y + 8y/5 + 8y/5 + 80 = 700$$

$$3y + 8y/5 + 8y/5 = 620$$

$$31y = 3100$$

$$y = 100$$

Number of Simple Mobiles sold by shop

$$A = 2 \times 100 = 200$$

Solution (4)

25% of number of simple Mobiles sold by shop

B =

$$240/4 = 60$$

75% of number of simple Mobiles sold by shop

B =

$$240 - 60 = 180$$

CP of each simple Mobiles

$$= 5 \times 60 \times 7x + 180 \times 6x = 150000$$

$$420x + 1080x = 150000$$

$$1500x = 150000$$

$$X = 100$$

CP of each simple Mobiles = 5 × 100

$$= \text{Rs. } 500$$

Q63. Text Solution:

Number of Android Mobiles sold by shop A = x

Number of Android Mobiles sold by shop

$$B = 2x$$

Number of Android Mobiles sold by shop

$$C = 2x \times 60/100$$

$$= 1.2x$$

Number of Android Mobiles sold by shop

$$D = 1.2x \times 100/80$$

$$= 1.5x$$

$$1.5x - 1x = 90$$

$$X = 180$$

Number of Android Mobiles sold by shop

$$A = 180$$

Number of Android Mobiles sold by shop

$$B = 2 \times 180 = 360$$

Number of Android Mobiles sold by shop

$$C = 1.2 \times 180 = 216$$

Number of Android Mobiles sold by shop

$$D = 1.5 \times 180 = 270$$

Total number of Simple Mobiles sold by all four

$$\text{shops} = 175 \times 4 = 700$$

Number of Simple Mobiles sold by shop C = y

Number of Simple Mobiles sold by shop A = 2y

Number of Simple Mobiles sold by shop D

$$= 2y \times 4/5 = 8y/5$$

Number of Simple phones sold by shop B = 8y/5

+ 80



$$\begin{aligned}
 &= y + 2y + 8y/5 + 8y/5 + 80 = 700 \\
 3y + 8y/5 + 8y/5 &= 620 \\
 31y &= 3100 \\
 y &= 100
 \end{aligned}$$

Number of Simple phones sold by shop

$$A = 2 \times 100 = 200$$

$$\text{Average} = \frac{180 + 216 + 270}{3} = 222$$

Q64. Text Solution:

Number of Android Mobiles sold by shop $A = x$

Number of Android Mobiles sold by shop $B = 2x$

Number of Android Mobiles sold by shop $C = 2x \times 60/100$

$$= 1.2x$$

Number of Android Mobiles sold by shop

$$D = 1.2x \times 100/80$$

$$= 1.5x$$

$$1.5x - 1x = 90$$

$$X = 180$$

Number of Android Mobiles sold by shop

$$A = 180$$

Number of Android Mobiles sold by shop

$$B = 2 \times 180 = 360$$

Number of Android Mobiles sold by shop

$$C = 1.2 \times 180 = 216$$

Number of Android Mobiles sold by shop

$$D = 1.5 \times 180 = 270$$

Total number of Simple Mobiles sold by all four

$$\text{shops} = 175 \times 4 = 700$$

Number of Simple Mobiles sold by shop $C = y$

Number of Simple Mobiles sold by shop $A = 2y$

Number of Simple Mobiles sold by shop D

$$= 2y \times 4/5 = 8y/5$$

Number of Simple phones sold by shop B = $8y/5 + 80$

$$= y + 2y + 8y/5 + 8y/5 + 80 = 700$$

$$3y + 8y/5 + 8y/5 = 620$$

$$31y = 3100$$

$$y = 100$$

Number of Simple phones sold by shop

$$A = 2 \times 100 = 200$$

Total number of Mobile sold by shop E = 120% of 430 = 516

Number of simple phone sold by shop E

$$= 160 \times \frac{9}{8} = 180$$

Total number of Android phone sold by

$$E = 516$$

$$180 = 336$$

Q65. Text Solution:

Number of Android Mobiles sold by shop $A = x$

Number of Android Mobiles sold by shop

$$B = 2x$$

Number of Android Mobiles sold by shop

$$C = 2x \times 60/100$$

$$= 1.2x$$

Number of Android Mobiles sold by shop

$$D = 1.2x \times 100/80$$

$$= 1.5x$$

$$1.5x - 1x = 90$$

$$X = 180$$



Number of Android Mobiles sold by shop

$$A = 180$$

Number of Android Mobiles sold by shop

$$B = 2 \times 180 = 360$$

Number of Android Mobiles sold by shop

$$C = 1.2 \times 180 = 216$$

Number of Android Mobiles sold by shop

$$D = 1.5 \times 180 = 270$$

Total number of Simple Mobiles sold by all four

$$\text{shops} = 175 \times 4 = 700$$

Number of Simple Mobiles sold by shop C = y

Number of Simple Mobiles sold by shop A = 2y

Number of Simple Mobiles sold by shop D

$$= 2y \times 4/5 = 8y/5$$

Number of Simple phones sold by shop B = 8y/5

$$+ 80$$

$$= y + 2y + 8y/5 + 8y/5 + 80 = 700$$

$$3y + 8y/5 + 8y/5 = 620$$

$$31y = 3100$$

$$y = 100$$

Number of Simple phones sold by shop

$$A = 2 \times 100 = 200$$

Number of simple mobile sold by shops C and

$$D = 100 + 160 = 260$$

$$\text{Required percentage} = \frac{360-260}{360} \times 100 = 28\%$$

more

Q66. Text Solution:

Solution (1-5):

Three people bought between G and A. B bought just before A. Only one person bought between B and J. J bought before B.

Case 1	G			B	A	
Case 2	B	A				G

Three people bought between J and C. Only one person bought between C and H. D bought just before H.

Case 1	G	J		B	A	C	D	H
Case 2	J		B	A	C	D	H	G
Case 3	C	D	H	G	J		B	A

Only one person bought between E and F who bought before E.

Case 2	F	J	E	B	A	C	D	H	G
--------	---	---	---	---	---	---	---	---	---

Q67. Text Solution:

Three people bought between G and A. B bought just before A. Only one person bought between B and J. J bought before B.

Case 1	G			B	A	
Case 2	B	A				G

Three people bought between J and C. Only one person bought between C and H. D bought just before H.

Case 1	G	J		B	A	C	D	H
Case 2	J		B	A	C	D	H	G
Case 3	C	D	H	G	J		B	A

Only one person bought between E and F who bought before E.

Case 2	F	J	E	B	A	C	D	H	G
--------	---	---	---	---	---	---	---	---	---

1 Solution (2)

Q68. Text Solution:



Three people bought between G and A. B bought just before A. Only one person bought between B and J. J bought before B.

Case 1	G			B	A	
Case 2	B	A				G

Three people bought between J and C. Only one person bought between C and H. D bought just before H.

Case 1	G	J		B	A	C	D	H
Case 2	J		B	A	C	D	H	G
Case 3	C	D	H	G	J		B	A

Only one person bought between E and F who bought before E.

Case 2	F	J	E	B	A	C	D	H	G
--------	---	---	---	---	---	---	---	---	---

1 Solution (2)

Q69. Text Solution:

Three people bought between G and A. B bought just before A. Only one person bought between B and J. J bought before B.

Case 1	G			B	A	
Case 2	B	A				G

Three people bought between J and C. Only one person bought between C and H. D bought just before H.

Case 1	G	J		B	A	C	D	H
Case 2	J		B	A	C	D	H	G
Case 3	C	D	H	G	J		B	A

Only one person bought between E and F who bought before E.

Case 2	F	J	E	B	A	C	D	H	G
--------	---	---	---	---	---	---	---	---	---

1 Solution (2)

Q70. Text Solution:

Three people bought between G and A. B bought just before A. Only one person bought between B and J. J bought before B.

Case 1	G			B	A	
Case 2	B	A				G

Three people bought between J and C. Only one person bought between C and H. D bought just before H.

Case 1	G	J		B	A	C	D	H
Case 2	J		B	A	C	D	H	G
Case 3	C	D	H	G	J		B	A

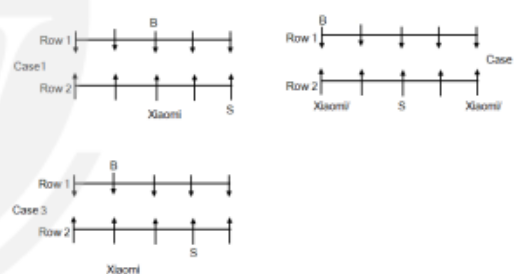
Only one person bought between E and F who bought before E.

Case 2	F	J	E	B	A	C	D	H	G
--------	---	---	---	---	---	---	---	---	---

1 Solution (2)

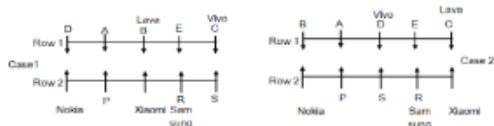
Q71. Text Solution:

B sits second to the right of the one who sits opposite to S. One person sits between S and the one who likes Xiaomi.

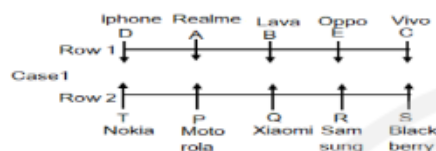


D sits second to the right of the one who sits opposite to the one who likes Xiaomi. (Case 3 is eliminated as there is no place for D). The one who likes Lava sits second to the left of D. P sits second to the left of the one who sits opposite to E. P does not like Xiaomi. Two people sit between C and the one who sits opposite to P. The one who likes Nokia sits to the immediate left of the one who sits opposite to A. R likes Samsung. The one who likes Vivo is an immediate neighbour of the one who sits opposite to R.





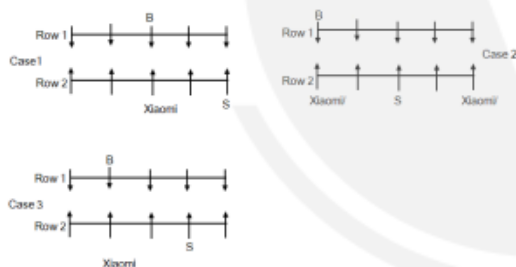
The one who likes iPhone sits opposite to the one who sits second to the left of Q. (Case 2 is eliminated as there is no place to put iPhone). The one who likes Oppo sits second to the left of the one who likes Realme. Two people sit between the one who likes BlackBerry and the one who likes Motorola. S does not like Motorola.



Both (a) and (b)

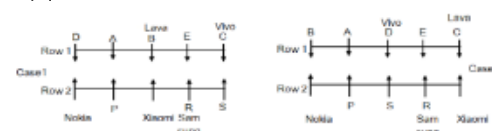
Q72. Text Solution:

B sits second to the right of the one who sits opposite to S. One person sits between S and the one who likes Xiaomi.

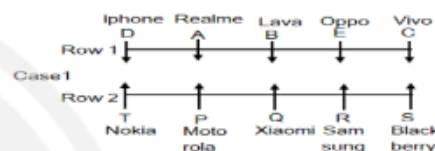


D sits second to the right of the one who sits opposite to the one who likes Xiaomi. (Case 3 is eliminated as there is no place for D). The one who likes Lava sits second to the left of D. P sits second to the left of the one who sits opposite to E. P does not like Xiaomi. Two people sit between C and the one who sits opposite to P. The one who likes Nokia sits to the immediate left of the one who sits opposite to A. R likes Samsung. The one who likes Vivo is an

immediate neighbour of the one who sits opposite to R.



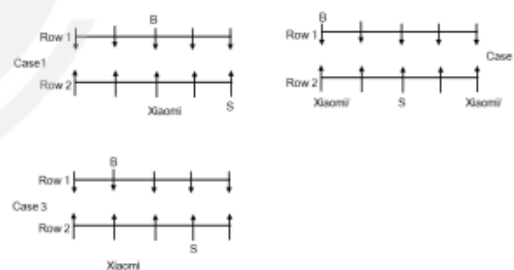
The one who likes iPhone sits opposite to the one who sits second to the left of Q. (Case 2 is eliminated as there is no place to put iPhone). The one who likes Oppo sits second to the left of the one who likes Realme. Two people sit between the one who likes BlackBerry and the one who likes Motorola. S does not like Motorola.



Blackberry

Q73. Text Solution:

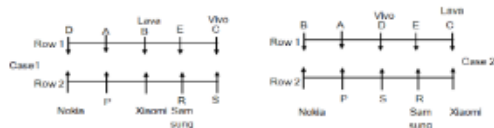
B sits second to the right of the one who sits opposite to S. One person sits between S and the one who likes Xiaomi.



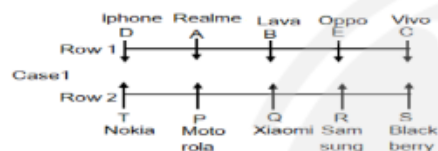
D sits second to the right of the one who sits opposite to the one who likes Xiaomi. (Case 3 is eliminated as there is no place for D). The one who likes Lava sits second to the left of D. P sits second to the left of the one who sits opposite to E. P does not like Xiaomi. Two people sit between C and the one who sits opposite to P. The one who likes Nokia sits to the immediate left of the one who sits opposite to A. R likes



Samsung. The one who likes Vivo is an immediate neighbour of the one who sits opposite to R.



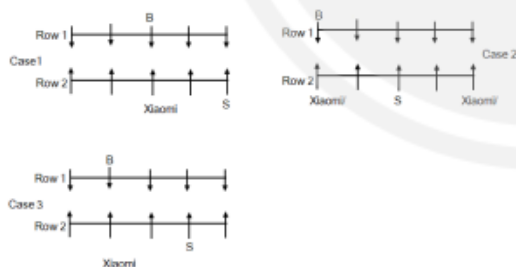
The one who likes iPhone sits opposite to the one who sits second to the left of Q. (Case 2 is eliminated as there is no place to put iPhone). The one who likes Oppo sits second to the left of the one who likes Realme. Two people sit between the one who likes Blackberry and the one who likes Motorola. S does not like Motorola.



P

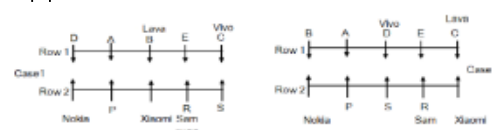
Q74. Text Solution:

B sits second to the right of the one who sits opposite to S. One person sits between S and the one who likes Xiaomi.

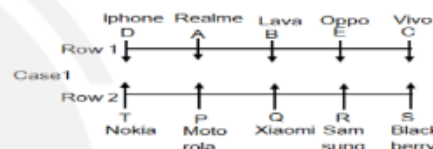


D sits second to the right of the one who sits opposite to the one who likes Xiaomi. (Case 3 is eliminated as there is no place for D). The one who likes Lava sits second to the left of D. P sits second to the left of the one who sits opposite to E. P does not like Xiaomi. Two people sit between C and the one who sits opposite to P. The one who likes Nokia sits to the immediate

left of the one who sits opposite to A. R likes Samsung. The one who likes Vivo is an immediate neighbour of the one who sits opposite to R.



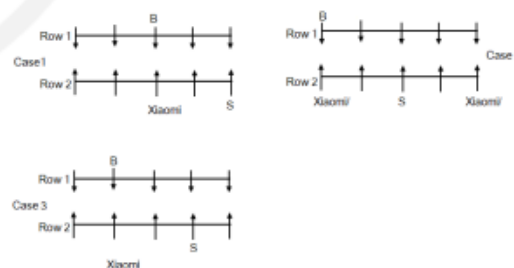
The one who likes iPhone sits opposite to the one who sits second to the left of Q. (Case 2 is eliminated as there is no place to put iPhone). The one who likes Oppo sits second to the left of the one who likes Realme. Two people sit between the one who likes Blackberry and the one who likes Motorola. S does not like Motorola.



C - Lava

Q75. Text Solution:

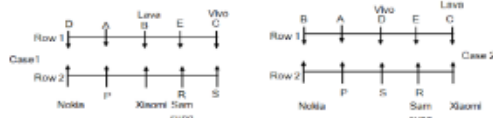
B sits second to the right of the one who sits opposite to S. One person sits between S and the one who likes Xiaomi.



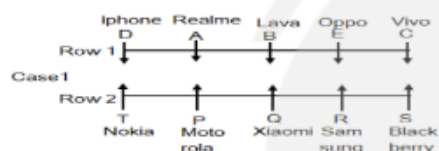
D sits second to the right of the one who sits opposite to the one who likes Xiaomi. (Case 3 is eliminated as there is no place for D). The one who likes Lava sits second to the left of D. P sits second to the left of the one who sits opposite to E. P does not like Xiaomi. Two people sit between C and the one who sits opposite to P.



The one who likes Nokia sits to the immediate left of the one who sits opposite to A. R likes Samsung. The one who likes Vivo is an immediate neighbour of the one who sits opposite to R.



The one who likes iPhone sits opposite to the one who sits second to the left of Q. (Case 2 is eliminated as there is no place to put iPhone). The one who likes Oppo sits second to the left of the one who likes Realme. Two people sit between the one who likes Blackberry and the one who likes Motorola. S does not like Motorola.



C, E

Q76. Text Solution:

The one who is just junior to D has 21 pens. (So, D is not a clerk). A is senior to D but junior to E. D is not MD. (So, D is Manager). B has 34 pens. (So, B is not a clerk). The difference between the number of pens C and A have is 20. A has more pens than B. (So, $A = C + 20$; $A = 41$). E has half of the pens B has but three more than D has. $E = B / 2$; $E = 34 / 2 = 17$ (Also, $E = D + 3$; $D = 17 - 3 = 14$)

Designation	Case 1	Case 2	Case 3
CEO	B (34)	E (17)	E (17)
CMD	E (17)	A (41)	B (34)
MD	A (41)	B (34)	A (41)
Manager	D (14)	D (14)	D (14)
Clerk	C (21)	C (21)	C (21)

The number of pens CMD has, is not a prime number. (Case 2 is eliminated)

Designation	Case 3
CEO	E (17)
CMD	B (34)
MD	A (41)
Manager	D (14)
Clerk	C (21)

Q77. Text Solution:

The one who is just junior to D has 21 pens. (So, D is not a clerk). A is senior to D but junior to E. D is not MD. (So, D is Manager). B has 34 pens. (So, B is not a clerk). The difference between the number of pens C and A have is 20. A has more pens than B. (So, $A = C + 20$; $A = 41$). E has half of the pens B has but three more than D has. $E = B / 2$; $E = 34 / 2 = 17$ (Also, $E = D + 3$; $D = 17 - 3 = 14$)



Designation	Case 1	Case 2	Case 3
CEO	B (34)	E (17)	E (17)
CMD	E (17)	A (41)	B (34)
MD	A (41)	B (34)	A (41)
Manager	D (14)	D (14)	D (14)
Clerk	C (21)	C (21)	C (21)

The number of pens CMD has, is not a prime number.
(Case 2 is eliminated)

Designation	Case 3
CEO	E (17)
CMD	B (34)
MD	A (41)
Manager	D (14)
Clerk	C (21)

Q78. Text Solution:

The one who is just junior to D has 21 pens. (So, D is not a clerk). A is senior to D but junior to E. D is not MD. (So, D is Manager). B has 34 pens. (So, B is not a clerk). The difference between the number of pens C and A have is 20. A has more pens than B. (So, $A=C+20$; $A=41$). E has half of the pens B has but three more than D has. $E=B/2$; $E=34/2=17$ (Also, $E=D+3$; $D=17-3=14$)

Designation	Case 1	Case 2	Case 3
CEO	B (34)	E (17)	E (17)
CMD	E (17)	A (41)	B (34)
MD	A (41)	B (34)	A (41)
Manager	D (14)	D (14)	D (14)
Clerk	C (21)	C (21)	C (21)

The number of pens CMD has, is not a prime number.
(Case 2 is eliminated)

Designation	Case 3
CEO	E (17)
CMD	B (34)
MD	A (41)
Manager	D (14)
Clerk	C (21)

Q79. Text Solution:

The one who is just junior to D has 21 pens. (So, D is not a clerk). A is senior to D but junior to E. D is not MD. (So, D is Manager). B has 34 pens. (So, B is not a clerk). The difference between the number of pens C and A have is 20. A has more pens than B. (So, $A=C+20$; $A=41$). E has half of the pens B has but three more than D has. $E=B/2$; $E=34/2=17$ (Also, $E=D+3$; $D=17-3=14$)



Designation	Case 1	Case 2	Case 3
CEO	B (34)	E (17)	E (17)
CMD	E (17)	A (41)	B (34)
MD	A (41)	B (34)	A (41)
Manager	D (14)	D (14)	D (14)
Clerk	C (21)	C (21)	C (21)

The number of pens CMD has, is not a prime number.
(Case 2 is eliminated)

Designation	Case 3
CEO	E (17)
CMD	B (34)
MD	A (41)
Manager	D (14)
Clerk	C (21)

Q80. Text Solution:

The one who is just junior to D has 21 pens. (So, D is not a clerk). A is senior to D but junior to E. D is not MD. (So, D is Manager). B has 34 pens. (So, B is not a clerk). The difference between the number of pens C and A have is 20. A has more pens than B. (So, $A=C+20$; $A=41$). E has half of the pens B has but three more than D has. $E=B/2$; $E=34/2=17$ (Also, $E=D+3$; $D=17-3=14$)

Designation	Case 1	Case 2	Case 3
CEO	B (34)	E (17)	E (17)
CMD	E (17)	A (41)	B (34)
MD	A (41)	B (34)	A (41)
Manager	D (14)	D (14)	D (14)
Clerk	C (21)	C (21)	C (21)

The number of pens CMD has, is not a prime number.
(Case 2 is eliminated)

Designation	Case 3
CEO	E (17)
CMD	B (34)
MD	A (41)
Manager	D (14)
Clerk	C (21)

Q81. Text Solution:

The difference between the ages of B and G is 5. B is older than G. (There are 2 possible cases). Number of people born after B is the same as the number of people born before A. Only one person was born between A and E. C is older than F but not the eldest.



Year (age)	Case 1	Case 2
1968 (54)		
1972 (50)	C	A
1988 (34)	B	C
1993 (29)	G	E
1999 (23)	A	F
2001 (21)	F	B
2006 (16)	E	G

The difference between the ages of C and D is not more than 5.

Year (age)	Case 1
1968 (54)	D
1972 (50)	C
1988 (34)	B
1993 (29)	G
1999 (23)	A
2001 (21)	F
2006 (16)	E

D

Q82. Text Solution:

The difference between the ages of B and G is 5. B is older than G. (There are 2 possible cases). Number of people born after B is the same as the number of people born before A. Only one person was born between A and E. C is older than F but not the eldest.

Year (age)	Case 1	Case 2
1968 (54)		
1972 (50)	C	A
1988 (34)	B	C
1993 (29)	G	E
1999 (23)	A	F
2001 (21)	F	B
2006 (16)	E	G

The difference between the ages of C and D is not more than 5.



Year (age)	Case 1
1968 (54)	D
1972 (50)	C
1988 (34)	B
1993 (29)	G
1999 (23)	A
2001 (21)	F
2006 (16)	E

8 year

Q83. Text Solution:

The difference between the ages of B and G is 5. B is older than G. (There are 2 possible cases). Number of people born after B is the same as the number of people born before A. Only one person was born between A and E. C is older than F but not the eldest.

Year (age)	Case 1	Case 2
1968 (54)		
1972 (50)	C	A
1988 (34)	B	C
1993 (29)	G	E
1999 (23)	A	F
2001 (21)	F	B
2006 (16)	E	G

The difference between the ages of C and D is not more than 5.

Year (age)	Case 1
1968 (54)	D
1972 (50)	C
1988 (34)	B
1993 (29)	G
1999 (23)	A
2001 (21)	F
2006 (16)	E

G

Q84. Text Solution:



The difference between the ages of B and G is 5. B is older than G. (There are 2 possible cases). Number of people born after B is the same as the number of people born before A. Only one person was born between A and E. C is older than F but not the eldest.

Year (age)	Case 1	Case 2
1968 (54)		
1972 (50)	C	A
1988 (34)	B	C
1993 (29)	G	E
1999 (23)	A	F
2001 (21)	F	B
2006 (16)	E	G

The difference between the ages of C and D is not more than 5.

Year (age)	Case 1
1968 (54)	D
1972 (50)	C
1988 (34)	B
1993 (29)	G
1999 (23)	A
2001 (21)	F
2006 (16)	E

1999

Q85. Text Solution:

The difference between the ages of B and G is 5. B is older than G. (There are 2 possible cases). Number of people born after B is the same as the number of people born before A. Only one person was born between A and E. C is older than F but not the eldest.



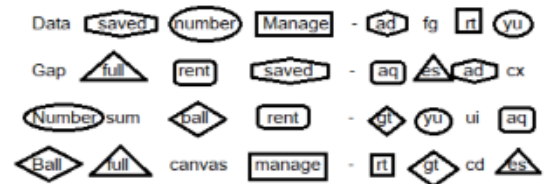
Year (age)	Case 1	Case 2
1968 (54)		
1972 (50)	C	A
1988 (34)	B	C
1993 (29)	G	E
1999 (23)	A	F
2001 (21)	F	B
2006 (16)	E	G

The difference between the ages of C and D is not more than 5.

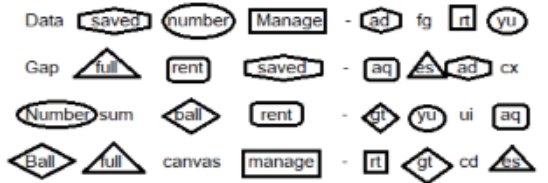
Year (age)	Case 1
1968 (54)	D
1972 (50)	C
1988 (34)	B
1993 (29)	G
1999 (23)	A
2001 (21)	F
2006 (16)	E

G

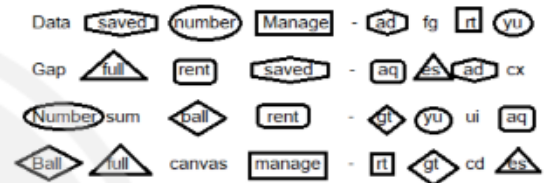
Q86. Text Solution:



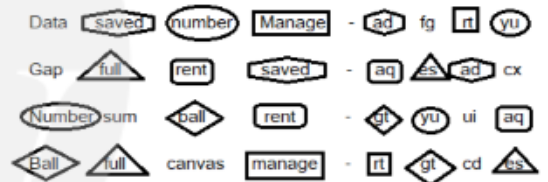
Q87. Text Solution:



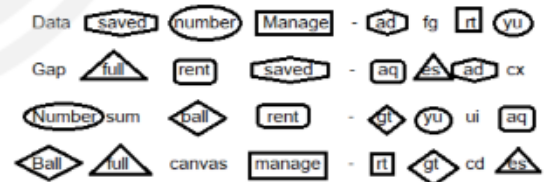
Q88. Text Solution:



Q89. Text Solution:



Q90. Text Solution:



Q91. Text Solution:

Solution:

$D = F \geq R \geq T$; $Q > A > S$; $T = G < H$; $S = W \leq E \leq D$

Conclusion:

I. $S \leq F$: True ($S = W \leq E \leq D = F$; $S \leq F$)

II. $D > H$: False ($D = F \geq R \geq T = G < H$; opposite signs between the elements)

Q92. Text Solution:



Solution:

$F > C = T$; $H \leq B \leq G$; $T \geq Y = U > O$; $G = V > F$

Conclusion:

I. $G > O$: True ($G = V > F > C = T \geq Y = U > O$; $G > O$)

II. $F < H$: False ($H \leq B \leq G = V > F$; opposite signs between the elements)

Q93. Text Solution:

Solution:

$L = K \leq M \leq N$; $Q > S = C$; $U = O > P < L$; $C \geq G \leq U$

Conclusion:

I. $L \geq G$: False ($G \leq U = O > P < L$; opposite signs between the elements)

II. $P < N$: True ($P < L = K \leq M \leq N$; $P < N$)

Q94. Text Solution:

Solution:

$V > C = D \geq R$; $U = H > N < B$; $Y \leq T = F > V$; $B \geq G \leq Y$;

Conclusion:

I. $B \geq V$: False ($B \geq G \leq Y \leq T = F > V$; opposite signs between the elements)

II. $T > R$: True ($T = F > V > C = D \geq R$; $T > R$)

Q95. Text Solution:

Solution:

$G = H > V$; $R > T = Y$; $V < B < N = M$; $Y \geq F \leq G$

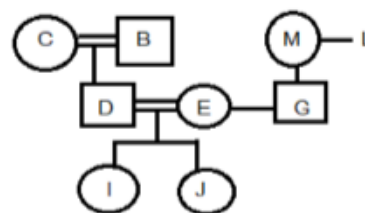
Conclusion:

I. $M > G$: False ($G = H > V < B < N = M$; opposite signs between the elements)

II. $R \geq G$: False ($R > T = Y \geq F \leq G$; opposite signs between the elements)

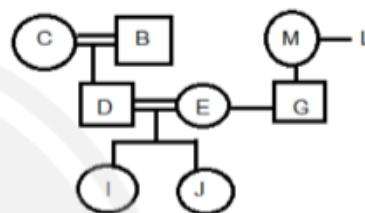
Q96. Text Solution:

C is the mother-in-law of E who is the wife of D. J is the granddaughter of M who is the mother of G. I is the daughter of D. D is the son of B and has no siblings. G is the unmarried nephew of L. G is the brother of E. J is the sister of I.



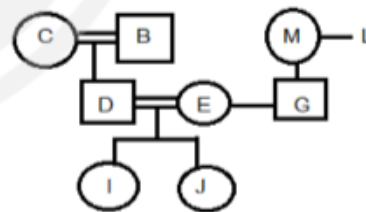
Q97. Text Solution:

C is the mother-in-law of E who is the wife of D. J is the granddaughter of M who is the mother of G. I is the daughter of D. D is the son of B and has no siblings. G is the unmarried nephew of L. G is the brother of E. J is the sister of I.



Q98. Text Solution:

C is the mother-in-law of E who is the wife of D. J is the granddaughter of M who is the mother of G. I is the daughter of D. D is the son of B and has no siblings. G is the unmarried nephew of L. G is the brother of E. J is the sister of I.



Q99 Text Solution:



Q100 Text Solution:



2nd, 3rd, 6th and 9th letters are: I, C, O, R
COIR

Coarse fiber derived from the outer husk of the

coconut is used for making ropes, mats, mattresses, etc.



[Android App](#)



[iOS App](#)



[PW Website](#)

