

Test 2

LISTENING

SECTION 1 *Questions 1-10*

Questions 1-5

Complete the table below.

*Write **NO MORE THAN THREE WORDS OR A NUMBER** for each answer.*

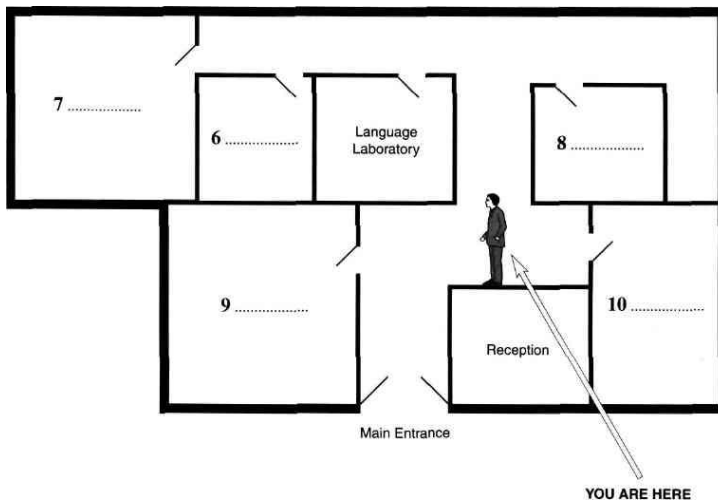
Programme of Activities for First Day		
Time	Place	Event
<i>Example</i> 10.00	1	Meet the Principal and staff
10.15		Talk by 2
10.45		Talk by 3
4	Classroom 5	5.....test

Questions 6-10

Label the rooms on the map below.

Choose your answers from the box below and write them next to questions 6-10.

CL	Computer Laboratory
DO	Director's Office
L	Library
MH	Main Hall
S	Storeroom
SAR	Self Access Room
SCR	Student Common Room
SR	Staff Room



SECTION 2 *Questions 11-20*

Questions 11-15

Complete the table below.

Write **NO MORE THAN THREE WORDS** for each answer.

TYPE OF HELP	EXAMPLES
FINANCIAL	<ul style="list-style-type: none"> • grants • 11
12	<ul style="list-style-type: none"> • childcare • nurseries
ACADEMIC	<ul style="list-style-type: none"> • 13 • using the library
14	<ul style="list-style-type: none"> • individual interests • 15

Questions 16-20

Complete the notes below.

Write **NUMBERS OR NO MORE THAN THREE WORDS** for each answer.

HELPLINE DETAILS	
Officer	Jackie 16
Address	Student Welfare Office 13 Marshall Road
Telephone number	17
Opening hours	9.30am – 6pm (weekdays) 18 (Saturdays) Ring or visit office for 19 N.B. At peak times there may be a 20

SECTION 3 *Questions 21-30*

Questions 21-24

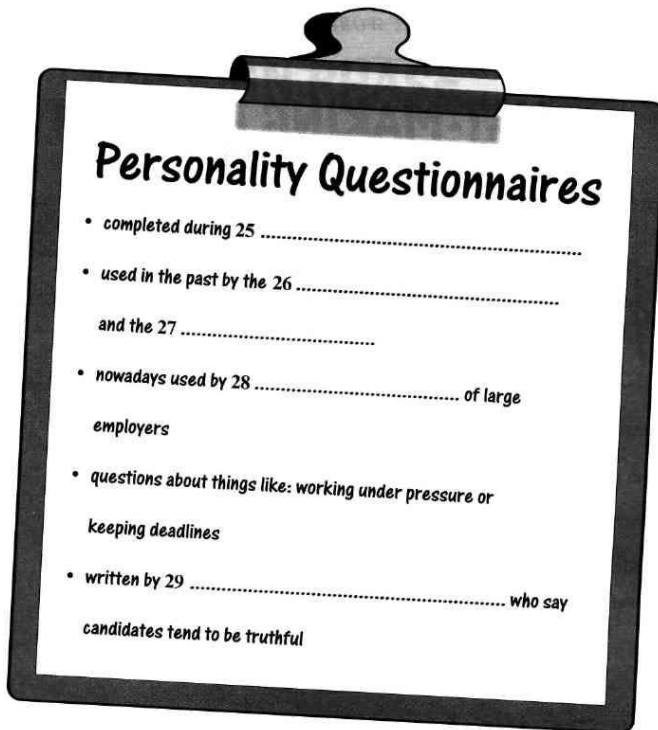
Choose the correct letters A-C.

- 21** At the start of the tutorial, the tutor emphasises the importance of
A interviews.
B staff selection.
C question techniques.
- 22** An example of a person who doesn't 'fit in' is someone who
A is over-qualified for the job.
B lacks experience of the tasks set.
C disagrees with the rest of the group.
- 23** An important part of teamwork is having trust in your
A colleagues' ability.
B employer's directions.
C company training.
- 24** The tutor says that finding out personal information is
A a skill that needs practice.
B avoided by many interviewers.
C already a part of job interviews.

Questions 25-29

Complete the notes below.

Write **NO MORE THAN THREE WORDS** for each answer.



Personality Questionnaires

- completed during 25
- used in the past by the 26
and the 27
- nowadays used by 28 of large
employers
- questions about things like: working under pressure or
keeping deadlines
- written by 29 who say
candidates tend to be truthful

Question 30

Choose the correct letter A—C.

What is the tutor trying to do in the tutorial?

- A describe one selection technique
- B criticise traditional approaches to interviews
- C illustrate how she uses personality questionnaires

SECTION 4 *Questions 31-40*

Questions 31 and 32

Complete the notes below.

Write **NO MORE THAN THREE WORDS AND/OR A NUMBER** for each answer.

HAT-MAKING PROJECT

Project Profile

Example	Answer
Name of student:	Vivien
Type of school: 31	
Age of pupils: 32	

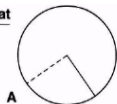
Questions 33 and 34

Label the diagrams.

Write **NO MORE THAN THREE WORDS** for each answer.

Introduction to Hat-Making

First Hat

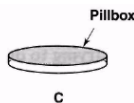
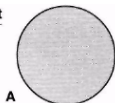


Conical hat



cut into centre and **33**.....the cut

Second Hat



stick flaps to **34**.....of circle

Questions 35-37

Complete the notes below.

Write **NO MORE THAN THREE WORDS** for each answer.

DESIGN PHASE

Stage A Refer to research and design a hat 35

Stage B Make a small-scale 36 hat

Constraints

- material: paper
- colours: 37
- glue: must not show

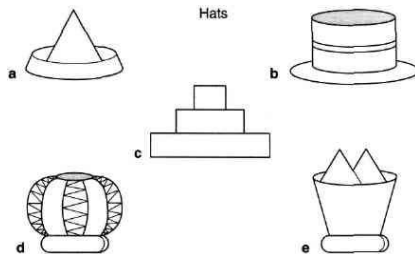
Questions 38-40

Indicate who made the hats below. Write the appropriate letter A-E next to each name.

38 Theresa.....

39 Muriel.....

40 Fabrice.....



TEST 2**LISTENING**

Each question correctly answered scores 1 mark. Please note! **CORRECT SPELLING NEEDED IN ALL ANSWERS.** (Where alternative spellings are accepted, these are stated in the key.)

Section 1, Questions 1-10

- 1 (the) Main Hall **NOT Hall**
- 2 (the) Director (of) (Studies) // DOS
- 3 (the) Student(s) Advisor/Adviser
- 4 eleven/11 o'clock //11.00 (am)
- 5 placement/English (test)
- 6 L // Library
- 7 MH // Main Hall
- 8 CL // Computer Laboratory
- 9 SR // Staff Room
- 10 SCR // Student Common Room

Section 2, Questions 11-20

- 11 (overseas)(student(s')) (tuition) fees
- 12 (the) domestic (area)
- 13 (essay(s')) deadlines **NOT** ressay(s)
- 14 social (life)
- 15 outings // trips
- 16 KOUACHI
- 17 3269940
- 18 ten/10(am)-/to4/four(pm)
- 19 (an) appointment(s)
- 20 waiting list

Section 3, Questions 21-30

- 21 B // staff selection
- 22 C // disagrees with the rest of the group
- 23 A // colleagues' ability
- 24 C // already a part of job interviews
- 25 selection (procedure)
- 26-27 **EITHER ORDER** (the) (ancient) Chinese
(the) military // army
- 28 (almost) two thirds // f
- 29 experts **NOT** expert
- 30 A // describe one selection technique

Section 4, Questions 31-40

- 31 secondary
- 32 14 // fourteen (year olds/years old)
- 33 overlap // overlapping **ACCEPT** over(-)lap // over(-)lapping
- 34 underside // underneath // bottom **NOT** side
- 35 on paper // in two dimensions
- 36 3/three(-)dimensional // 3(-)D
- 37 **MUST STATE ALL THREE** white, grey/gray, brown
- 38 C
- 39 D
- 40 A

If you score...		
0-17	18-27	28-40
you are highly unlikely to get	you may get an acceptable	you are likely to get an
an acceptable score under	score under examination	acceptable score under
examination conditions and we	conditions but we recommend	examination conditions but
recommend that you spend a	that you think about having	remember that different
lot of time improving your	more practice or lessons before	institutions will find different
English before you take IELTS.	you take IELTS.	scores acceptable.