



NSEB 11th 2026

DPP-16

Structural Organization in Animals

1. **Assertion (A):** Frogs are beneficial for mankind.
Reason (R): They eat insects and protect the crop.
 (A) Both Assertion (A) and Reason (R) are the true, and Reason (R) is a correct explanation of Assertion (A).
 (B) Both Assertion (A) and Reason (R) are the true, but Reason (R) is not a correct explanation of Assertion (A).
 (C) Assertion (A) is true, but Reason (R) is false.
 (D) Assertion (A) is false, but Reason (R) is true.
2. A mature female frog can lay _____ at a time.
 (A) 25 to 30 ova
 (B) 250 to 300 ova
 (C) 2500 to 3000 ova
 (D) 25000 to 30000 ova
3. **Assertion (A):** Frogs maintain ecological balance.
Reason (R): Frogs serves as an important link of food chain and food web in the ecosystem.
 (A) Both Assertion (A) and Reason (R) are the true, and Reason (R) is a correct explanation of Assertion (A).
 (B) Both Assertion (A) and Reason (R) are the true, but Reason (R) is not a correct explanation of Assertion (A).
 (C) Assertion (A) is true, but Reason (R) is false.
 (D) Assertion (A) is false, but Reason (R) is true.
4. Match List-I with List-II to find out the correct option.

List-I		List-II	
I.	Male reproductive organ	A.	Sensory papillae
II.	Female reproductive organ	B.	Pair of yellowish ovoid testes
III.	Hibernation	C.	Pair of ovaries
IV.	Sense organ for touch	D.	Winter sleep

- (A) I-B, II-C, III-D, IV-A
 (B) I-A, II-C, III-D, IV-B
 (C) I-B, II-A, III-D, IV-C
 (D) I-C, II-B, III-D, IV-A
5. Select the correct route for the passage of sperms in male frogs
 (A) Testes → Bidder's canal → Kidney → Vasa efferentia → Urinogenital duct → Cloaca
 (B) Testes → Vasa efferentia → Kidney → Seminal Vesicle → Urinogenital duct → Cloaca
 (C) Testes → Vasa efferentia → Bidder's canal → Ureter → Cloaca
 (D) Testes → Vasa efferentia → Kidney → Bidder's canal → Urinogenital duct → Cloaca
6. The number of cranial nerves present in frogs are;
 (A) 12 Pairs (B) 15 Pairs
 (C) 20 Pairs (D) 10 Pairs
7. Frog has sense organs like sensory papillae (for touch), taste buds, nasal epithelium (smell), eyes, tympanum with internal ear (for hearing) out of these, which of the following is well-organised structure?
 (A) Eyes and internal ears
 (B) Eyes and sensory papillae
 (C) Internal ears and taste buds
 (D) Taste buds and sensory papillae
8. Match List-I with List-II:

List-I		List-II	
I.	Urea	A.	Respiration
II.	Closed	B.	Excretory product
III.	External	C.	Circulation
IV.	Cutaneous	D.	Fertilisation

Choose the **correct** answer from the options given below:

- (A) I-C, II-B, III-A, IV-D
 (B) I-B, II-C, III-D, IV-A
 (C) I-D, II-A, III-C, IV-B
 (D) I-D, II-A, III-B, IV-C

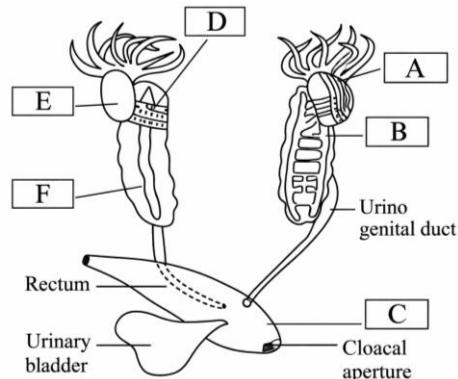


9. Match the List-I and List-II find the correct combination.

List-I		List-II	
A.	External	P.	Larva
B.	Closed type	Q.	Circulation
C.	Kidney	R.	Excretion
D.	Tadpole	S.	Fertilization

- (A) A-(S); B-(Q); C-(R); D-(P)
 (B) A-(Q); B-(R); C-(P); D-(S)
 (C) A-(Q); B-(P); C-(R); D-(S)
 (D) A-(R); B-(P); C-(Q); D-(S)
10. In frog, vasa efferentia opens into:
 (A) Epididymis
 (B) Urinogenital duct
 (C) Oviduct
 (D) Bidder's canal
11. Which among the following statements is incorrect?
 (A) In female frogs, ovaries are located near kidneys and have functional connection with the kidneys
 (B) In male frogs, vasa efferentia arising from the testes enters the kidneys and opens into the Bidder's canal.
 (C) In female frogs, oviducts open into the cloaca.
 (D) In male frogs, Bidder's canal communicates with urinogenital duct that comes out of the kidneys and opens into the cloaca.
12. The development of frog is
 (A) Indirect
 (B) Direct
 (C) Both (A) and (B)
 (D) None of the above
13. ___A___ is the yellow colored structure which are found adhered to the upper part of kidneys by a double fold of peritoneum called ___B___
 (A) A-Ovary, B-Mesorchium
 (B) A-Testis, B-Vas deferens
 (C) A-Ovary, B-Oviduct
 (D) A-Testis, B-Mesorchium

14. Fertilization in frog takes place in
 (A) Water (B) Fallopian tube
 (C) Uterus (D) Oviduct
15. The number of digits in the forelimb and hindlimb of the frog, respectively:
 (A) 3,4 (B) 5,4
 (C) 4,5 (D) 5,5
16. The eye in frog:
 (A) compound eye (B) simple eye
 (C) several ommatidia (D) poor night vision
17. The figure given below depicting a part of anatomy of the reproductive system of the male frog. In which one of the options given below, the parts are correctly identified?



- (A) A - Nephrons, B - Testis, C - Ureters, D - Villi, E - Kidney, F- Cloaca
 (B) A - Fat bodies, B - Kidney, C - Cloaca, D - Vasa efferentia, E - Testis, F - Adrenal gland
 (C) A - Fat bodies, B - Testis, C - Ureters, D - Vasa efferentia, E - Testis, F- Kidney
 (D) A - Mesorchium, B - Testis, C - Cloaca, D - Fat bodies, E - Kidney, F- Adrenal gland
18. Match the **List-I** with **List-II** to find the **correct** option regarding frog.

List-I		List-II	
A.	Vasa efferentia	P.	Herbivore
B.	Ova	Q.	Carnivore
C.	Tadpole	R.	2500-3000
D.	Frog	S.	10-12

- (A) A-I; B-II; C-III; D-IV
 (B) A-III; B-IV; C-II; D-I
 (C) A-III; B-IV; C-I; D-II
 (D) A-IV; B-III; C-I; D-II



19. Match the List-I with List-II to find the **correct** option w.r.t. frog.

List-I		List-II	
A.	Respiratory organ	P.	Thymus
B.	Endocrine gland	Q.	Sinus venosus
C.	Urogenital duct	R.	Bidder's canal
D.	Atrium	S.	Skin

- (1) A-IV; B-II; C-III; D-I
 (2) A-IV; B-III; C-II; D-I
 (3) A-IV; B-I; C-II; D-III
 (4) A-IV; B-I; C-III; D-II

20. Select the **correct** option after carefully reading the statements wrt reproductive system of a male frog.

Statement I: Testes are adhered to the upper part of the kidneys by a double fold of peritoneum called mesorchium.

Statement II: Vasa efferentia are 50 to 60 in number and enter kidneys on their side.

- (A) Both Statement I and Statement II are correct.
 (B) Statement I is correct, but Statement II is incorrect.
 (C) Statement I is incorrect, but Statement II is correct.
 (D) Both Statement I and Statement II are incorrect.

21. Which of the following sequences is **correct** for the passage of ova in frog?

- (A) Ovaries → Oviducal funnel → Oviduct → Urinogenital duct → Cloaca → Cloacal aperture
 (B) Ovaries → Oviducal funnel → Oviduct → Cloaca → Cloacal aperture
 (C) Ovaries → Oviducal funnel → Oviduct → Bidder's canal → Cloaca → Cloacal aperture
 (D) Ovaries → Oviducal funnel → Oviduct → Urinogenital duct → Bidder's canal → Cloaca



Answer Key

- | | | | |
|-----|-----|-----|-----|
| 1. | (A) | 12. | (A) |
| 2. | (C) | 13. | (D) |
| 3. | (A) | 14. | (A) |
| 4. | (A) | 15. | (C) |
| 5. | (D) | 16. | (B) |
| 6. | (D) | 17. | (B) |
| 7. | (A) | 18. | (D) |
| 8. | (B) | 19. | (D) |
| 9. | (A) | 20. | (B) |
| 10. | (D) | 21. | (B) |
| 11. | (A) | | |