

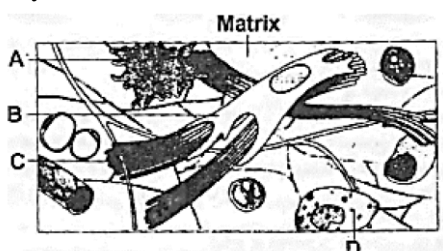


NSEB 11th 2026

DPP-04

Structural Organization in Animals

- Tendons and ligaments are the examples of;
 - Bone
 - Cartilage
 - Dense regular connective tissue
 - Dense irregular connective tissue
- Areolar tissues contain;
 - T lymphocytes and B lymphocytes.
 - fibroblasts, macrophages and mast cells.
 - fibroblast cells only.
 - fibroblasts and fat globules.
- Yellow, white and reticular fibres made up of protein;
 - elastin, reticulin and collagen, respectively.
 - reticulin, elastin and collagen, respectively.
 - collagen, elastin and reticulin protein, respectively.
 - elastin, collagen and reticulin protein, respectively
- Fat-storing adipose tissue is;
 - Loose connective tissue
 - Dense regular connective tissue
 - Dense irregular connective tissue
 - Specialized connective tissue
- In the below diagram of areolar connective tissue, the different cells and parts have been indicated by alphabets. Choose the answer in which these alphabets correctly match with the parts and cells they indicate.



	A	B	C	D
(A)	Adipocyte	Collagen fibres	Microfilament	Mast cells
(B)	Macrophage	Collagen fibres	Microfilament	Mast cells
(C)	Macrophage	Collagen fibres	Microtubules	RBC
(D)	Macrophage	Fibroblast	Collagen fibres	Mast Cells

- Which of the following is not a part of areolar tissue?
 - Osteoblasts
 - Fibroblasts
 - Macrophages
 - Plasma cells
- Ligaments contain;
 - loose bundles of fibres.
 - large fat storage areas.
 - parallelly arranged collagen fibres.
 - irregularly placed elastin fibres.
- Identify figures-I and II.

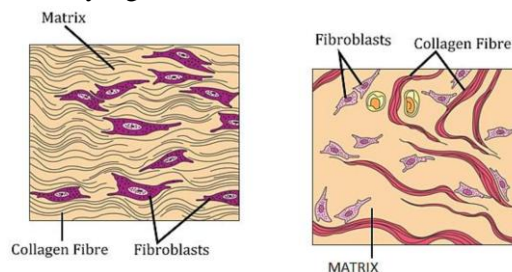
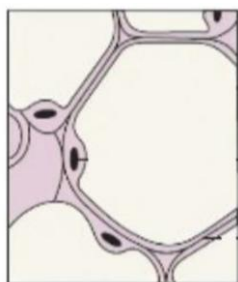


	Figure-I	Figure-II
(A)	Dense regular connective tissue	Dense irregular connective tissue
(B)	Loose irregular connective tissue	Loose regular connective tissue
(C)	Adipose tissue	Specialised connective tissue
(D)	Connective tissue proper	Areolar tissue



9. Identify the figure with its correct function.



- (A) Areolar connective tissue — Serves as a support framework for epithelium.
 (B) Adipose tissue— Store fats and act as heat insulators.
 (C) Dense regular tissue — Provide flexibility.
 (D) Dense irregular tissue—Provide strength and elasticity.
10. Areolar connective tissue joins;
 (A) fat body with muscles.
 (B) integument with muscles.
 (C) bones with muscles.
 (D) bones with bones.
11. Choose the correctly matched pair.
 (A) Tendons—Specialised connective tissue
 (B) Adipose tissue – Dense connective tissue
 (C) Areolar tissue – Loose connective tissue
 (D) Cartilage—Loose connective tissue
12. Name the tissue which acts as insulation layer.
 (A) Areolar tissue (B) Ligament
 (C) Adipose tissue (D) Tendon
13. **Statement-I:** Connective tissue are least abundant in complex animals.
Statement-II: Connective tissue only line the some cavities, duct of body.
 (A) Statement I and Statement II both are correct.
 (B) Statement I is correct, but statement II is incorrect.
 (C) Statement I is incorrect, but Statement II is correct.
 (D) Statement I and Statement II both are incorrect.

14. **Assertion (A):** The cells of connective tissues except blood secrete fibres.

Reason (R): Fibres provide strength, elasticity and flexibility to the tissue.

- (A) Both Assertion (A) and Reason (R) are true, and Reason (R) is a correct explanation of Assertion (A).
 (B) Both Assertion (A) and Reason (R) are true, but Reason (R) is not a correct explanation of Assertion (A).
 (C) Assertion (A) is true, and Reason (R) is false.
 (D) Assertion (A) is false, and Reason (R) is true.

15. Match List-I with List-II to find out the correct option.

List-I		List-II	
I	Areolar tissue	A	Support framework for epithelium
II	Adipose tissue	B	Connect bone to bone
III	Tendon	C	Connect bone to muscles
IV	Ligament	D	Provide insulation

- (A) I-A, II-D, III-C, IV-B
 (B) I-D, II-C, III-A, IV-B
 (C) I-C, II-A, III-D, IV-B
 (D) I-B, II-A, III-D, IV-C



Answer Key

1. (C)
2. (B)
3. (D)
4. (A)
5. (D)
6. (A)
7. (C)
8. (A)

9. (B)
10. (B)
11. (C)
12. (C)
13. (D)
14. (B)
15. (A)